

COVER SHEET

| | |
|--|---|
| Title | Does the use of in-stream structures and woody debris increase the abundance of salmonids? |
| Systematic review | N^o12 |
| Reviewer(s) | Stewart, G.B., Bayliss, H.R., Showler, D.A., Pullin, A.S. and Sutherland, W.J. |
| Protocol title | <u>Does In-stream Habitat Improvement Increase the Abundance of Trout & Salmon?</u> |
| Date protocol first published on website | April 2005 |
| Date draft review first published on website | 10 th July 2006 |
| Date review first published on website | 25 th October 2006 |
| Date of most recent amendment | n/a |
| Date of most recent SUBSTANTIVE amendment | n/a |
| Details of most recent changes | n/a |
| Contact address | Centre for Evidence-Based Conservation School of Biosciences, University of Birmingham, Edgbaston, Birmingham, B15 2TT, U.K |
| Sources of support | NERC Knowledge-transfer/ Environment Agency funding |
| Conflict of interests | None reported |

SYSTEMATIC REVIEW SUMMARY

Background

In-stream structures (such as flow deflectors, weirs and woody debris) have been in widespread use for the last eighty years to increase the production of fish stocks, primarily salmonids, but also species of conservation concern such as European Bullhead *Cottus gobio*. A large number of studies, of variable quality, have been undertaken to assess the effectiveness of in-stream structures, often with conflicting results. It has therefore been hard to develop a consensus regarding the utility of in-stream structures despite their continued use. This systematic review formally synthesises empirical evidence regarding the effectiveness of in-stream structures in terms of impact on abundance of salmonid fish and *C. gobio* using a documented *a priori* protocol.

Objectives

To assess the impact of in-stream structures on the abundance of salmonids and *Cottus gobio*.

To assess the impact of hydrological and ecological variables on the effectiveness of in-stream structures.

Search strategy

Electronic searching of ISI Web of Knowledge, Science Direct, Directory of Open Access Journals, Copac, Scirus, Scopus, Index to Theses Online, Digital Dissertations Online, Agricola, Europa, Wildlink, JSTOR. Publication searches of Canadian Wildlife Service, Countryside Council of Wales, Department of Agriculture and Rural Development, Department of Environment, Food and Rural Affairs, English Nature, Environment Agency, Food & Agriculture Organisation of the United Nations, Fisheries Management Science Programme, Fisheries and Oceans Canada, FRS Freshwater Laboratory (formerly Freshwater Fisheries Laboratory), Joint Nature Conservancy Council, United States National Parks and Wildlife Service, Scottish Natural Heritage. Searched Fishbase.org, BiologyBrowser.org, Graylit.osti.gov, Librarian's Internet Index, Google Scholar, Scirus and Google. Hand-searches of bibliographies of accepted articles. Personal contact with researchers.

Selection criteria

Any studies examining the impact of in-stream structures on the abundance of salmonids or *Cottus gobio*. Appropriate spatial or temporal controls were a prerequisite for studies to be included in quantitative analysis.

Main results

A total of 137 studies fulfilled the inclusion criteria of which 38 provided quantitative data regarding the impact of in-stream structures on salmonids or *Cottus gobio*, suitable for meta-analysis. Fifty four independent data points

provided evidence regarding the impact of engineered in-stream devices on salmonids, with a further 30 data points regarding woody debris and nine concerning *Cottus gobio*.

Meta-analytical synthesis results in a weakly significant positive impact of engineered in-stream habitat structures on salmonid populations. No ecologically significant impact on salmonid population size or habitat preference was evident. There are no significant relationships between the effectiveness of engineered in-stream structures and hydrological or ecological variables at a population level, although there is limited evidence that in-stream structures provide preferential habitat at higher discharges.

Woody debris has a significant impact on salmonids resulting in increased population abundance. This is especially pronounced for Brook Trout *Salvelinus fontinalis*. There is a lesser, but still significant, positive impact on microhabitat preference. Woody debris provides more preferential habitat at longer timescales and higher discharges, but appears to be less effective for Coho salmon *Oncorhynchus kisutch* than other salmonid species.

Riffles increase local abundance of *Cottus gobio* but deflectors do not.

Reviewers' conclusions

Implications for conservation

Available evidence does not demonstrate an ecologically significant impact of engineered in-stream structures on populations of salmonids, although they may provide preferential habitat where discharge is high ($>6\text{m}^3\text{s}^{-1}$).

Available evidence suggests that woody debris does increase the population abundance of salmonids, especially the brook trout *Salvelinus fontinalis*. It may also provide more preferential habitat over time (>4 years) where discharge is high ($>1\text{m}^3\text{s}^{-1}$) but does not appear to provide preferential habitat for *Oncorhynchus kisutch*.

Cottus gobio populations are not increased by deflectors but riffles may provide preferential habitat.

Implications for further research

Further long term work is required to corroborate the evidence presented in this systematic review. Much currently available data is of inadequate duration and assesses habitat preference rather than long-term population change. Reach and water-shed scale studies are also rare in comparison to habitat unit studies. The use of independent treatments and controls, replication, and rigorous parameters of abundance is advocated.

Numerous confounding variables operate in riverine systems and sample sizes are currently too small to assess the impact of many factors in a robust manner. Further monitoring is required to fully evaluate the potential impact of time,

discharge and species. Other hydrological and ecological factors such as stream gradient, proportion of cobbles in the substrate, degree of existing modification, water quality and canopy cover are insufficiently reported and studied, although they are known to impact fish populations.

1. BACKGROUND

In-stream structures have been widely adopted as a form of river restoration since the early 20th Century (Bayley 2002; Thompson 2006), although the type of work carried out and any associated monitoring varies widely (Bash & Ryan 2002; Holmes 1998). The earliest examples of in-stream structures were hard, engineered solutions (Bayley 2002), whereas the trend towards the later part of the century was toward more natural structures, which are believed to be more effective (Schmetterling 2001). The current paradigm embraces a holistic watershed approach, including land use management and catchment area planning along with the use of in-stream structures (Hendry *et al.* 2003; Kauffman *et al.* 1997; Opperman 2004).

In-stream habitat structures are used in an attempt to redress habitat degradation and enhance salmonid (and other fish) stocks, in streams and rivers. A wide range of techniques are employed, often in combination during restoration work. The interventions fall into two broad categories: structures designed to change flow patterns, water velocities and turbulence (deflectors, weirs, riffles); or structures which stabilize banks by reducing erosion and sediment inputs (riprap, rock revetments, gabions, livestock fencing). Woody debris, such as fallen trees, logs and root wads, is also considered here, independently of engineered structures, because it can act as a deflector or weir, changing flow patterns and potentially increasing the amount of pool habitat (Rosenfeld & Huato, 2003). Woody debris is now often deliberately introduced into rivers to influence flow and scour, and to create favourable habitat for many species, although it had previously been cleared from many salmonid rivers as it was thought to form a barrier to migration (Kauffman *et al.* 1997; Opperman *et al.* 2006). Both engineered in-stream structures and woody debris are sometimes used in combination with wider catchment management (e.g. contour ploughing to reduce sediment input, provision of bank-side cover). Other interventions, designed to improve habitat such as the provision of gravel for spawning may be important elements in restoration but are not the focus of this review.

A large number of studies, of variable quality, have been undertaken to assess the effectiveness of in-stream structures, often with conflicting results (Bayley, 2002; Roni *et al.* 2002, 2005; Thompson, 2006). Studies have shown that confounding variables such as fishing pressures have not been taken into account, and may be responsible for changes in salmonid abundance (Thompson 2006). There is also concern that some studies report positive outcomes which are not supported by the underlying statistics (Roni, 2002). It has therefore been hard to develop a consensus regarding the utility of in-stream structures despite their widespread and continued use. This systematic review formally synthesises empirical evidence regarding the effectiveness of both engineered in-stream structures and

woody debris using a documented *a priori* protocol. The effectiveness of in-stream structures may be affected by local gradient and valley confinement, proportion of cobbles in the substrate, degree of existing modification, distance from source, water quality, flow, stream size and canopy cover. The impact of these potential effect modifiers was also investigated.

2. OBJECTIVES

To assess the impact of in-stream structures on the abundance of salmonids and *Cottus gobio*.

To assess the impact of hydrological and ecological variables on the effectiveness of in-stream structures.

3. METHODS

3.1 Question formulation

The Environment Agency identified the need for a systematic review to evaluate the effectiveness of in-stream devices. The review question and review protocol were developed by dialogue between CEBC and the Environment Agency. The need to differentiate between increasing carrying capacity (population change) and redistribution of the population (habitat preference) was highlighted.

3.2 Search strategy

Relevant studies were identified through computerised searches of the following electronic databases: ISI Web of Knowledge, Science Direct, Directory of Open Access Journals (DOAJ), Copac, Scirus, Scopus, Index to Theses Online (1970-present), Digital Dissertations Online, Agricola, Europa, English Nature's "Wildlink", JSTOR.

The search terms used to search the databases were: Trout*, Salmo*, Bullhead*, Cottus AND gobio, River* AND flow*, Stream* AND flow*, Deflector* AND flow*, Grazing AND fish*

* Denotes the use of a wildcard e.g. Salmo* is used in order to pick up salmon, salmo, salmonids etc.

These search terms yield huge quantities of results, and in order to make the web and organisational searches more specific and efficient, and to address the more limited search functionality of these sites, the search terms were revised to reflect the terminology used in the relevant papers already retrieved.

The search terms used for web and organisation searches were: river restor* AND (salmo* OR trout), in-stream structures AND (salmo* OR trout), woody debris OR large woody debris OR lwd, river restoration habitat improvement.

Publication searches were undertaken on conservation and statutory organisation websites (Canadian Wildlife Service, Countryside Council of Wales, Department of Agriculture and Rural Development, Department of Environment, Food and Rural Affairs, English Nature, EA, FAO, Fisheries Management Science Programme, Fisheries and Oceans Canada, FRS Freshwater Laboratory (formerly Freshwater Fisheries Laboratory), Joint Nature Conservancy Council, US National Parks and Wildlife Service, Scottish Natural Heritage). In addition bibliographies of articles viewed at full text were searched. Authors, experts and practitioners were also contacted for further recommendations and for provision of any unpublished material or missing data that may be relevant.

Web searching was undertaken using the same terms as used for the organisational searches. Sites searched were Wiley InterScience E-Journals Interface, Fishbase.org, BiologyBrowser.org, Graylit.osti.gov, Librarian's Internet Index, Google Scholar, SOSIG Environmental Science, Scirus, Exalead and Google. Exalead and Google were also searched specifically for spreadsheet files. The first 50 hits were checked for relevance, and then any that appeared relevant in the next 50.

Foreign language searches were not conducted for this review. However, the search identified studies on a global scale (e.g. studies from North America and Japan) all of which were included in the systematic review process, irrespective of geographical location.

3.3 Study inclusion criteria

Studies were initially filtered by title and any obviously irrelevant articles were excluded. Subsequently, the abstracts of the remaining studies were examined with regard to possible relevance to the systematic review question. A random subset of these articles (n = 152) were assessed for relevance by a second independent reviewer; agreement on inclusion between the reviewers was deemed to be "substantially good" (Cohen's Kappa test: $K = 0.745$). Studies were accepted for viewing at full text if it appeared that they contained information pertinent to the review question, or if the abstract was ambiguous and did not allow inferences to be drawn about the content of the article. The criteria, which studies had to meet for inclusion into the final stage of the systematic review, were:

1. *Subject*: rivers and streams containing trout, salmon and/or *Cottus gobio* populations.
2. *Intervention*: In-stream habitat structures e.g. flow deflectors, riffles, revetments, weirs, woody debris, riprap and other bank-stabilisation.
3. *Outcome*: the primary outcome was change in abundance of trout, salmon or *C. gobio*. However, studies were not rejected on the basis of outcome.
4. *Type of study*: any empirical study. Only studies with appropriate spatial or temporal controls and (pseudo) replication were included in quantitative analysis.

Studies which were not included:

1. Data regarding fish steps and other fish passage devices have not been included in this review as they are not a form of in-stream improvement.
2. Data regarding comparisons of natural vs. rivers altered away from natural habitat have not been included as this was not an intentional attempt to improve fish habitat, rather degradation.
3. Data regarding spawning behaviour and gravel were not included unless either as part of confounded habitat changes, or as a specific attempt to improve in-stream habitat.
4. Data about non-salmonids (except *Cottus gobio*) was not included in meta-analysis (other fish or species or habitat quality data was summarised due to lack of rigour and small sample sizes).

3.4 Study quality assessment

Reviewers considered articles viewed at full text excluding or admitting them to different categories of information quality. Qualitative data and quantitative data without comparators or variance measures were summarised in qualitative tables with a summary of methodology in lieu of study quality assessment. Quantitative data regarding change in salmonid or *Cottus gobio* stocks with comparators were subject to more rigorous critical appraisal.

Details of the methodology (e.g. study design, timescale), were recorded on data extraction forms. The biases resulting from study design were considered and an explicit statement regarding the source, and where possible, magnitude and likely impact was included.

The difference between population change and habitat preference has been referred to in the literature (Johnson 2005), and this distinction was made based on scale and methodology. Where data were collected over a number of years at a reach or sub-reach scale using a robust replicated assessment of abundance (electrofishing or mark-recapture), they were classified as population change data. Where data were collected over short timescales and/or at a micro-habitat level with little replication they were considered more likely to represent habitat preference than population change. The criteria used to distinguish these groups are included in Appendix 4.

Study quality assessment was undertaken by one reviewer with reference to a second in cases of uncertainty.

3.5 Data extraction

The details of study methodology and outcome were summarised in tables where qualitative data, data without comparators or variance, and data regarding outcomes other than change in the abundance of salmonids or bullhead were presented. Quantitative data regarding engineered in-stream structures was considered separately to data regarding woody debris. Engineered woody structures such as log weirs and dams were included as engineered in-stream structures. The quantitative data regarding salmonid and *Cottus gobio* populations

were extracted using *a priori* rules to minimise bias, and standardised tables (Appendix 1) to increase transparency.

The site conditions (reasons for heterogeneity) identified in the protocol were extracted where presented, and recorded in a spreadsheet. These were not always extractable, for example where studies covered a range of streams with different characteristics. The characteristics of interest include local gradient, valley confinement, proportion of cobbles in the substrate, degree of existing modification, distance from source, water quality, flow, stream size and canopy cover.

Mean abundance data were extracted as a continuous outcome. Change in mean difference at treatment and control sites was extracted when Before-After, Control-Intervention (BACI) data were presented, but mean difference was extracted from site comparisons (treatment and reference) and time-series (before and after treatment) when other data were unavailable. Data were extracted from the longest time range where there was a choice to maximise predictive power. Independent data points were extracted, although different species in the same river were considered independent and where habitat manipulation occurred, data from different conditions were treated independently.

Data were extracted preferentially at the reach scale, with variance derived from within-reach replication. However, some manuscripts presented data at the reach scale with genuine replication. These authors were contacted, and asked to provide raw data to allow extraction of variance from within-reach measures. Data points based on between reach variance were included where authors did not respond as it was deemed better practice to include data across scales with down-weighting than to exclude it altogether. Likewise, when change in mean difference was extractable but change in variance was not, pooled variance was included resulting in down-weighting rather than exclusion. Variance was also imputed where p values were presented, and from summary data where no other measures were available. Sensitivity analyses were performed to examine the impact of these data extraction techniques where sample size allowed.

Data extraction was undertaken by one reviewer with a second reviewer checking data hygiene and verifying the robustness of the data extraction.

3.6 Data synthesis

The impact of the in-stream structures was explored using meta-analysis and meta-regression (Cooper and Hedges 1994, Scheiner and Gurevich 2001, Deeks *et al* 2001); these analyses were performed on fish abundance estimates (primarily counts and densities). Cohen's D effect sizes (Deeks *et al.* 2001) were derived from the treatment and control means, standard deviations and sample sizes. This effect size is generated by dividing the mean difference by pooled standard deviation (Cooper and Hedges 1994, Deeks *et al.* 2001) expressing the magnitude of the effect in relation to its variance. Data were pooled and combined across studies using DerSimonian and Laird random effects meta-analysis based on standardised mean difference (SMD) (DerSimonian and Laird 1986; Cooper and Hedges 1994). The random effects model anticipates that the true effect size

differs among studies and the aim of the analysis is to quantify such variation in the effect parameters; it is therefore appropriate for ecological questions where the true effect is likely to vary between studies (Gurevitch and Hedges 1999). The standardised mean difference method expresses the size of the treatment effect in each study relative to the variability observed in that study (Deeks *et al.* 2001) allowing combination of the different fish abundance parameters reported in the primary studies.

Separate analyses were performed on in-stream structures, woody debris and *Cottus gobio*. Small sample sizes and the widespread use of combinations of in-stream structures in restoration projects precluded further comparison of types of in-stream-structure. The data was further split into population change and habitat preference (for salmonids), and the impact of riffles and deflectors were analysed separately for *Cottus gobio*. The impact of the in-stream structures or woody debris was examined by inspection of Forrest plots of the estimated treatment effects from the studies along with their 95% confidence intervals, and by formal tests of homogeneity undertaken prior to each meta-analysis (Thompson and Sharp 1999). Publication bias was investigated by examination of funnel plot asymmetry (Egger *et al.* 1997).

The relationship between the impact of in-stream-structures or woody debris and explanatory variables was tested by examining the associations of treatment effects with time, discharge and stream width, using random effects SMD meta-regression in Stata version 8.2 (Stata Corporation, USA, 2003) using the program Metareg (Sharp 1998). Sub-group analysis was used to explore variation in impact amongst different species where sample size was sufficient. Other hydrological and ecological factors such as stream gradient, proportion of cobbles in the substrate, degree of existing modification, water quality and canopy cover were insufficiently reported for robust analysis.

4. RESULTS

4.1 Description of studies

Searching was completed in June 2006. 181 studies remained in the systematic review after the abstract stage filter stage (Table 1); 89 were captured using electronic database searches and 92 were found via other sources including Google Scholar. 18 studies selected at the abstract stage have not been obtained at full text for further examination, as they were unavailable from the British Library or other sources. Another 3 relevant studies were gathered through communication and feedback with authors and subject experts.

Table 1: Number of studies included during each of the systematic review filtering stages.

| Systematic review stage | No. of studies |
|--|-----------------------|
| Studies captured using search terms in electronic databases (excluding duplicates) | *33,500 |
| Studies captured using search terms in electronic databases remaining after title filter | 152 |
| Studies from web and organisational searches after title filter | 171 |
| Studies remaining after abstract filter | 181 |
| Studies remaining after full text filter | 134 |
| Relevant studies retrieved through correspondence at draft stage | 3 |
| Studies used in meta-analysis | 38 |
| Studies summarised in qualitative tables | 99 |

*Approximate figure only

The review included 137 studies. Of these, 99 studies were assessed as non-meta-analysable. 27 were reviews or of broad interest and have been summarised in Appendix 2. 72 studies were qualitative or did not have comparators or variance measures. These have been broadly classed by intervention and are summarised in Appendix 3. Twenty six studies compared multiple interventions, either through multiple in-stream structure types, other interventions such as riparian management or by combining data from multiple sites that had been subjected to different restoration works. Six studies were concerned with land use management and catchment scale works such as riparian cover, grazing and logging. Seven studies compared microhabitat characteristics, which provided correlative data rather than control-intervention. 9 studies were concerned with flow modification and in-stream devices- either with regards to altered flow levels or rechannelisation. 16 studies have been summarised that focus on woody debris. The other studies look at various other types of in-stream devices.

Thirty-eight studies provided quantitative measurements of salmonid or *Cottus gobio* abundance data associated with in-stream structures or woody debris, with a comparator and variance measures. In total 54 independent data points were extracted regarding the impact of engineered in-stream structures on salmonids, with a further 30 data points regarding woody debris and nine concerning *Cottus gobio*. These include additional data points supplied by authors.

There is considerable variation in the key characteristics of quantitative studies (Tables 3-6).

Table 2: Characteristics of studies included in meta-analysis – in-stream structures and population studies

Key:

? Value unclear or not presented

(x) Shown after author names, this denotes the number of data points extracted from the paper if more than one.

| Study Authors | Intervention(s) | Outcome | | Methodological | | Ecological | Hydrological | | |
|-----------------------------|---------------------------------------|-----------------|---|--|---------------|------------------------------|-----------------|---|------------------|
| | | Mean difference | Abundance measure | Design | Time (months) | Species | Age class (yrs) | Discharge (m ³ s ⁻¹) | Stream Width (m) |
| Hartzler 1983 | Half-log covers | 4.38 | Change in mean number over time (from a 380m reach) | BACI | 36 | <i>Salmo trutta</i> | >1 | 0.5 | 7 |
| House 1996 (3) | Multiple devices | 1037 | Change in total number (from a 1.7Km reach) | BACI (variance pooled and imputed) | 96 | <i>Oncorhynchus kisutch</i> | Juvenile | 0.04 | 8 |
| | | 26 | | | | | | | |
| | | -0.03 | Change in density m ² | | | | | | |
| Linløkken 1997 | Four rock weirs, deflectors | -6 | Change in number per 100 m | BACI (variance pooled and imputed) | 96 | <i>Salmo trutta</i> | Mostly >2 | 0.95 | ? |
| Wang <i>et al.</i> 2002 (4) | Riprap, fencing, watershed management | -55.85 | Change in annual catch | BACI (variance derived from independent reaches) | 120 | <i>Salvelinus fontinalis</i> | ? | ? | ? |
| | | -19.75 | | | | | | | |
| | | -82.15 | | | | | | | |
| | | -16.875 | | | | | | | |
| Wu <i>et al.</i> | Stream bank cover | 0.43 | Number m ³ | Site | ? | <i>Oncorhynchus</i> | ? | 0.05 | 3.09 |

| | | | | | | | | |
|---------------------------------|--|-----------------------------|--|--|-------------------|---|-------------------|-------|
| 2000 (2) | | 0.32 | | comparison | | <i>mykiss</i> | 0.59 | 8.18 |
| Binns 2004 | Multiple devices | -600 | Numbers per mile | Site comparison across 35 Wyoming rivers | Presumed variable | <i>Oncorhynchus, Salmo, & Salvelinus</i> trout genera | Presumed variable | |
| Binns & Remmick 1994 | Multiple devices, fencing | 135 | Numbers per mile | Pre and post impact | 132 | <i>Oncorhynchus clarki utah</i> | Variable 2 | 5 |
| Fjellheim <i>et al.</i> 2003 | Weir creation, boulders | 56 | Density 100m ² | Pre and post impact (variance derived from t test and imputed) | 72 | <i>Salmo trutta</i> | Mostly <1 | ? ? |
| Gargan <i>et al.</i> 2002 (2) | Revetments, weirs, rubble mats, lateral scour pools. | $\frac{-0.00057}{0.083486}$ | Change in minimum density (m ² ?) | BACI | ? | <i>Salmo trutta</i> <i>Salmo salar</i> | <2 <1 | ? ? |
| Hunt 1974 | Bank cover, deflectors | 0.275 | Annual production g/ m ² /yr | Pre and post impact | 84 | <i>Salvelinus fontinalis</i> | Mostly <2 | ? 9.7 |
| Hvidsten & Johnsen 1992 (2) | Weirs, revetments, bouldering | $\frac{30}{-5}$ | Density (m ² ?) | Site comparison | 72 | <i>Salmo salar</i> <i>Salmo trutta</i> | <1 | ? 20 |
| Langford <i>et al.</i> 2001 (2) | Bouldering, fencing, bank alteration | $\frac{0.2167}{6.927}$ | Density 100 m ² | Site comparison | 24 | <i>Salmo trutta</i> <i>Salmo salar</i> | ? Parr | ? ? |
| Mesick 1995 | Pool creation | 0.5 | survival index | Site comparison | 12 | <i>Salmo trutta</i> | 0-3 | 6.7 8 |
| Quinn & Kwak 2000 (4) | Revetments, planting stabilization, in-stream structures | $\frac{-310}{700}$ | Change in density (fish/ha) | BACI (variance pooled and | 24 | <i>Salmo trutta</i> <i>Oncorhynchus mykiss</i> | At least some >2+ | 86 ? |

| | | | | | | | | | |
|----------------------------|----------------------------|-------|----------------------------|---------------------|----|---|------------|---|---|
| | | 940 | | imputed) | | <i>Salvelinus fontinalis</i> | | | |
| | | 20 | | | | <i>Oncorhynchus clarki clarki</i> | | | |
| Scruton <i>et al.</i> 1998 | Rewatering and dam removal | -2.57 | Density 100 m ² | Pre and post impact | 72 | <i>Salvelinus fontinalis</i> , <i>Salmo salar</i> | Mostly >0+ | ? | ? |

Table 3: Characteristics of studies included in meta-analysis – in-stream structures and habitat preference studies

| Study Authors | Intervention(s) | Outcome | | Methodological | | Ecological | Hydrological | | |
|----------------------------|---|-----------------|---------------------------------------|------------------------------------|---------------|------------|-----------------|---|----------------------------|
| | | Mean difference | Abundance measure | Design | Time (months) | Species | Age class (yrs) | Discharge (m ³ s ⁻¹) | Stream Width (m) |
| Knudsen & Dilley 1987 (15) | Riprap | 148 | Petersen & Seber population estimates | BACI (variance pooled and imputed) | 0.75 | | >1 | 6.4 | ? |
| | Streambank relocation, riprap, streambed alteration | -722 | | | | | | 0.64 | |
| | Riprap | -19 | | | | | | 0.4 | |
| | Streambank relocation, riprap, streambed alteration | 35.1 | | | | | | 4.9 | |
| | Riprap | -333 | | | | | | 2.4 | |
| | Streambank relocation, riprap, streambed alteration | 333 | | | | | | 6.4 | <i>Oncorhynchus mykiss</i> |
| | Riprap | -57 | | | | | | 0.64 | |
| | Streambank relocation, riprap, streambed alteration | -4 | | | | | | 0.4 | |

| | | | | | | | | | | | | | |
|----------------------------|--|--------|--|--|------|---------------------------------|----------------------------|-------|-----|--|--|------|--|
| | Riprap | 401 | | | | | | 4.9 | | | | | |
| | Streambank relocation, riprap, streambed alteration | -119 | | | | | | 2.4 | | | | | |
| | Riprap | 13 | | | | | | 6.4 | | | | | |
| | Streambank relocation, riprap, streambed alteration | 17 | | | | | | 0.64 | | | | | |
| | Riprap | -1.1 | | | | | <i>Oncorhynchus clarki</i> | 0.4 | | | | | |
| | Streambank relocation, riprap, streambed alteration | 22 | | | | | | 4.9 | | | | | |
| | Riprap | -17 | | | | | | 2.4 | | | | | |
| Bjornn <i>et al</i> 1991 | Riparian cover | 2 | Change in number of salmon in >26.1m ² (reach mean) | BACI (variance derived from independent reaches) | 0.36 | <i>Oncorhynchus kisutch</i> | Mostly age 0+ | 0.03 | 3 | | | | |
| | Undercut bank cover- | -3.1 | | | | | | | | | | | |
| | Large boulder cover | 3.3 | | | | | | | | | | | |
| Brusven <i>et al</i> 1986 | Artificial cover simulating undercut bank | 17 | Mean number per 7.6m x 2.5m section | Site comparison | 0.06 | <i>Oncorhynchus tshawytscha</i> | Juvenile | 0.05 | 2.5 | | | | |
| Jones <i>et al</i> 2003 | Ramps, v-weirs, vanes and groins in an artificial stream | -8.9 | Change in density m ³ | BACI (variance pooled and imputed) | 30 | <i>Thymallus arcticus</i> | Adults | ? | ? | | | | |
| | Bank devices | -0.5 | | | | | | 0.032 | | | | | |
| | Mid-channel devices | -1 | | | | | | | | | | | |
| Mitchell <i>et al</i> 1998 | Bank devices | 0.2 | Numbers (100 m ² ?) | Experimental site comparison | 1.25 | <i>Salmo salar</i> | Variable? | 0.063 | 3 | | | | |
| | Mid-channel devices | -0.7 | | | | | | | | | | | |
| | Bank devices | 0.2 | | | | | | | | | | | |
| | Mid-channel devices | -0.7 | | | | | | | | | | 0.13 | |
| Moerke & Lamberti | Remeandering, riparian growth, gravel, riffles | -26.92 | Fish per 100m ⁻¹ | Site comparison | 36 | <i>Oncorhynchus kisutch</i> | Mostly <2 | 0.03 | 3 | | | | |

| | |
|------|--------------------------------|
| 2003 | creation. (LWD also included). |
|------|--------------------------------|

Table 4: Characteristics of studies included in meta-analysis – woody debris and population studies

| Study Authors | Intervention(s) | Outcome | | Methodological | | Ecological | Hydrological | | |
|----------------------------|---------------------------------|--|---|--|----------------------------------|--|----------------------|---|----------------------------------|
| | | Mean difference | Abundance measure | Design | Time (months) | Species | Age class (yrs) | Discharge (m ³ s ⁻¹) | Stream Width (m) |
| Mossop & Bradford 2004 | Large wood debris | 119 | Number per 100m | Site comparison (variance imputed from summary statistics) | 72 | <i>Oncorhynchus tshawytscha</i> | Juvenile | 0.1m3s | 4.4 |
| Gowan & Fausch 2006 (8) | Large woody debris (structures) | 130 75 13 63 44 -25 48 5.80 | Change in number per 250m section | BACI (variance pooled and imputed) | 72 na | <i>Salvelinus fontinalis</i> <i>Salmo trutta</i> <i>Oncorhynchus mykiss</i> <i>Salmo trutta</i> | Adults and Juveniles | ? | 4.4 ? |
| Inoue & Nakano 1998 | Large and fine woody debris | 1000 | Density N 100m ⁻² | Site comparison | 60 | <i>Oncorhynchus masou</i> | Juveniles | ? | 15.6 |
| Johnson <i>et al.</i> 2005 | Large woody debris | 1950 | Population (thousands) in a 25.5 km treatment | Pre and post impact | 60 | <i>Oncorhynchus mykiss</i> | Age 0+ | ? | 15.6 |

| | | | | | | |
|-----|------|---------|-----------------------------------|--------|--------|------|
| (3) | -150 | stretch | <i>Oncorhynchus clarki clarki</i> | Adult | ? | 15.6 |
| | 119 | | <i>Oncorhynchus kisutch</i> | Age 0+ | 0.1m3s | 4.4 |

Table 5: Characteristics of studies included in meta-analysis – woody debris and habitat preference studies

| Study Authors | Intervention(s) | Outcome | | Methodological | | Ecological | | Hydrological | |
|-----------------------|--------------------|-----------------|----------------------------------|---|---------------|-----------------------------|-----------------|---|------------------|
| | | Mean difference | Abundance measure | Design | Time (months) | Species | Age class (yrs) | Discharge (m ³ s ⁻¹) | Stream Width (m) |
| Giannico & Hinch 2003 | Large Woody debris | -0.1 | Fish density (unspecified units) | Experimental site comparison (variance imputed from summary statistics) | 12 | <i>Oncorhynchus kisutch</i> | Juveniles | 0.09 | 5.9 |
| | | 1.4 | | | | | | | 6.18 |
| | | -0.0375 | | | | | | | |
| Nickelson et al. 1992 | | 0.29 | Change in density m ² | BACI (variance pooled and imputed) | 24 | <i>Oncorhynchus kisutch</i> | Juveniles | ? | ? |
| Cederholm et al. 1997 | | 263.2267 | Number (unspecified units) | Pre and post impact (variance imputed from summary statistics) | 36 | <i>Oncorhynchus kisutch</i> | Smolt | 1m | 10 |

| | | | | | | | | |
|-----------------------------|-------|---|--|------|--|------------------|---------|-------|
| Culp <i>et al</i> 1996 | 0.9 | Change in density m ² | BACI (variance pooled and imputed) | 3 | <i>Oncorhynchus mykiss</i> | Fry | 1.43 | 23 |
| Flebbe 1999 | -1.62 | Trout numbers per sampling unit (md is equivalent to -0.05 fish m ²) | Site comparison (variance derived from KW test and imputed) | ? | <i>Oncorhynchus mykiss</i> | Juveniles? | ? | 3.5 |
| Sweka & Hartman 2006 | 1.42 | Change in density 100 m ² | BACI (variance pooled and imputed) | 48 | <i>Salvelinus fontinalis</i> | Age 1+ | ? | small |
| Zika and Peter 2002 | 49 | Number per 100m stream | Site comparison (variance imputed from summary statistics) | 36 | <i>Salmo trutta</i> | Mostly <2 | ? | 4 |
| Giannico 2000 | -0.08 | proportional distribution | Site comparison | 1 | <i>Oncorhynchus kisutch</i> | Fry | 0.04 | 2 |
| Lehane <i>et al.</i> 2002 | 21.8 | Change in numbers per 25m segment | BACI | 21 | <i>Salmo trutta</i> | Variable | 0.45 | 4.7 |
| Horan <i>et al</i> | 6.4 | Fish/100 m ² | Correlative- site comparison | - | <i>Oncorhynchus clarki pleuriticus</i> | All | 0.4-0.6 | - |
| Bjornn <i>et al</i> 1991 | -6.4 | Change in number of salmon in >26.1m ² (reach mean) | BACI (variance derived from independent reaches) | 0.36 | <i>Oncorhynchus kisutch</i> | Mostly age 0+ | 0.03 | 3 |

4.2 Meta-analysis

In-stream structures population abundance

Engineered in-stream structures resulted in a small, statistically significant increase in salmonid population abundance (DL SMD 0.566, z 2.01, p 0.044) when considering all available data (Figure 1). Exclusion of data with imputed variance resulted in a larger but non-significant effect size (DL SMD 0.823, z 1.66, p 0.096). The range of variation in characteristics of the studies resulted in significant heterogeneity in effect size (chi-squared 209.53, df 26, $p > 0.001$). Seven individual data points had significant positive effects whilst three had a significant negative effect (Figure 1). This was not related to time (coef -0.007, z -0.92, p 0.359), discharge (coef -0.001, z -0.16, p 0.872) or stream width (coef -0.07, z -0.78, p 0.438). Analysis by species was not possible due to small sample sizes.

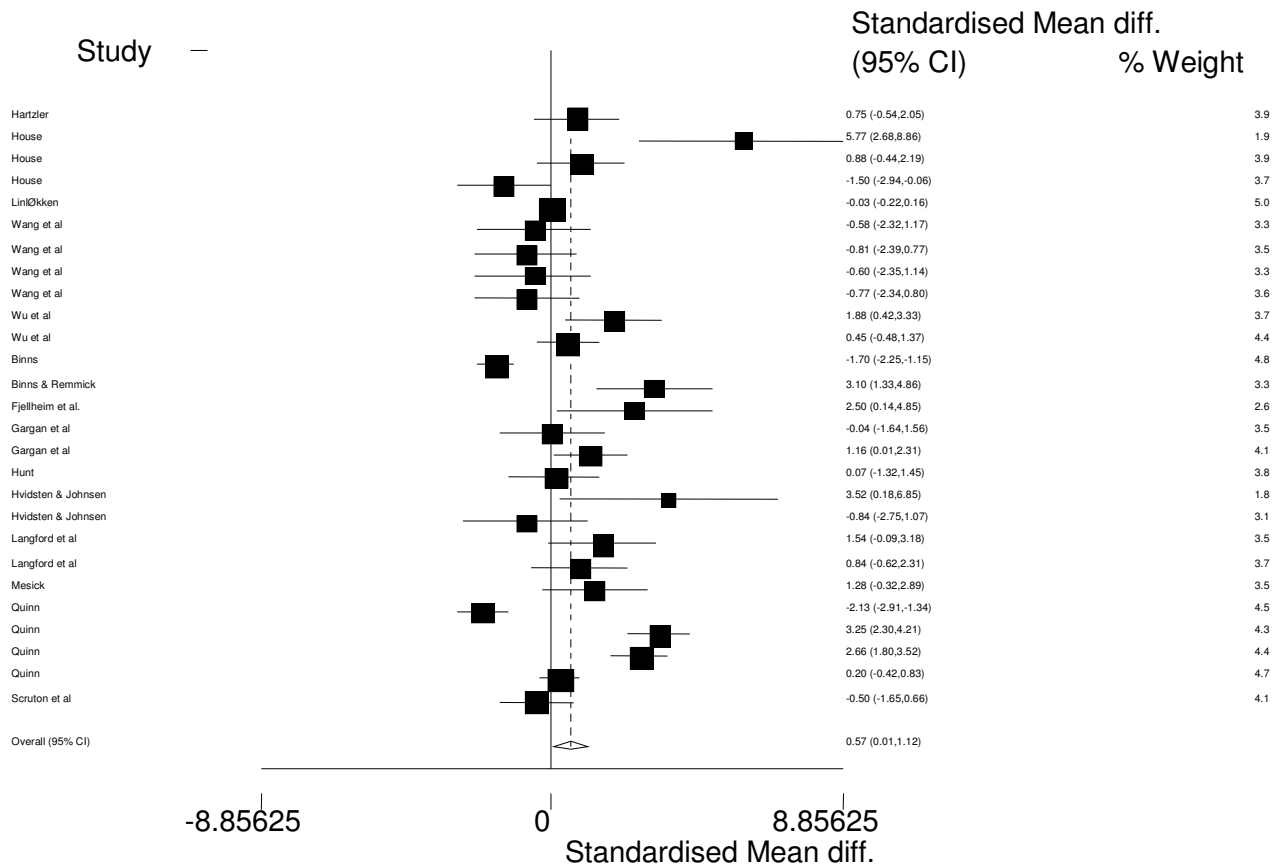


Figure 1: Forrest plot of in-stream structure population study effect sizes. Solid boxes represent the effect size of individual studies; box size is related to sample size; error bars are 95% confidence intervals; the open diamond is the pooled effect size generated using standardized mean difference random effects meta analysis. Note different axis scales when comparing Forrest plots.

In-stream structures-habitat preference

Engineered in-stream structures had no detectable effect on local salmonid abundance, indicating no habitat preference for in-stream structures (DL SMD -0.47, z 1.26, p 0.206; DL SMD excluding imputed variance data, -0.41, z 0.96, p 0.337) (Figure 2). The range of variation in characteristics of the studies resulted in significant heterogeneity in effect size (chi-squared 169.92, df 26, $p < 0.001$). Six individual data points had significant positive effects whilst eight had a significant negative effect (Figure 2). This was not related to time (coef -1.789, z -1.60, p 0.111) but there was a small significant relationship with discharge, indicating that in-stream structures may provide preferential habitat at higher discharges (coef 0.437, z 3.15, p 0.002). Analysis by species was not possible due to small sample sizes.

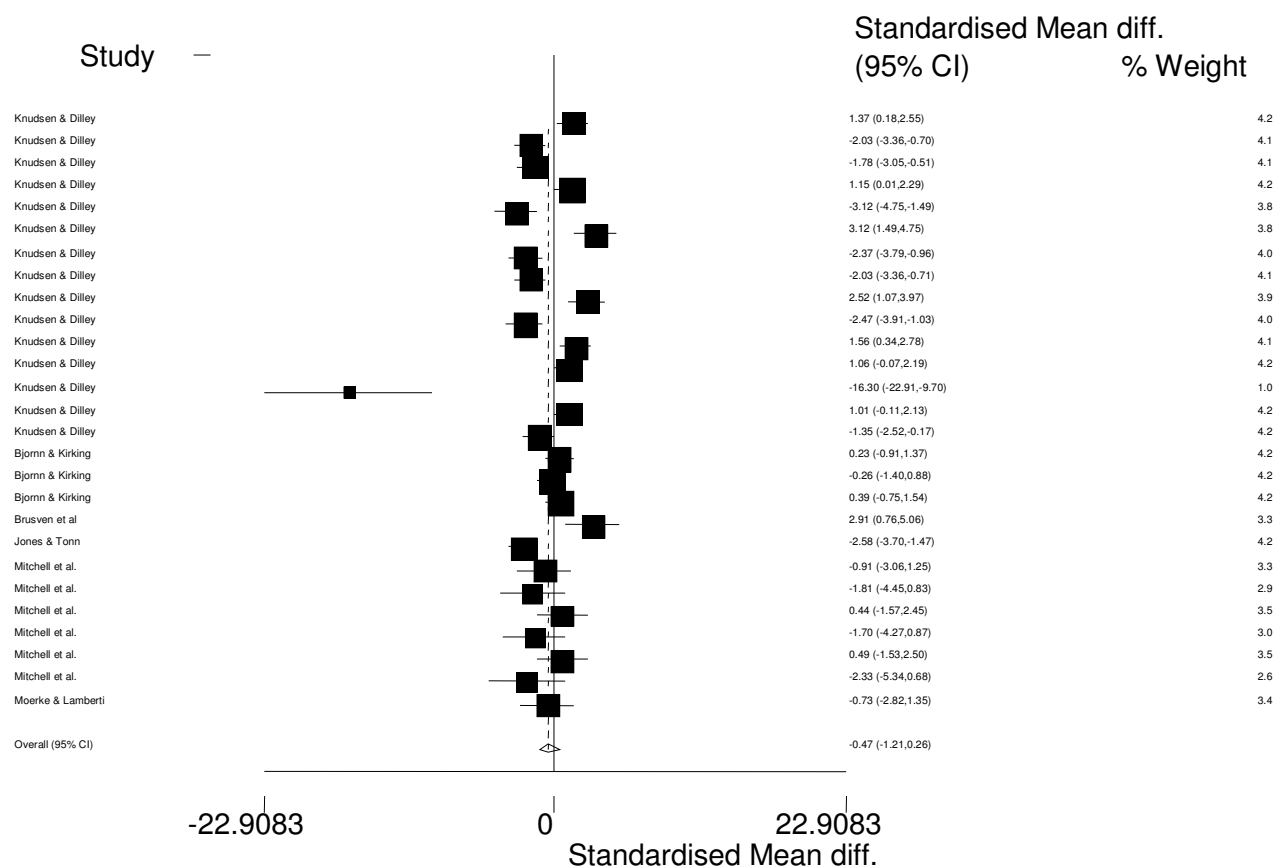


Figure 2: Forrest plot of in-stream structure habitat preference study effect sizes. Solid boxes represent the effect size of individual studies; box size is related to sample size; error bars are 95% confidence intervals; the open diamond is the pooled effect size generated using standardized mean difference random effects meta analysis. Note different axis scales when comparing Forrest plots.

Funnel plot asymmetry and the Egger test suggest that there is no significant publication bias in the in-stream data set (Egger bias 0.262, p 0.658) (Figure 3).

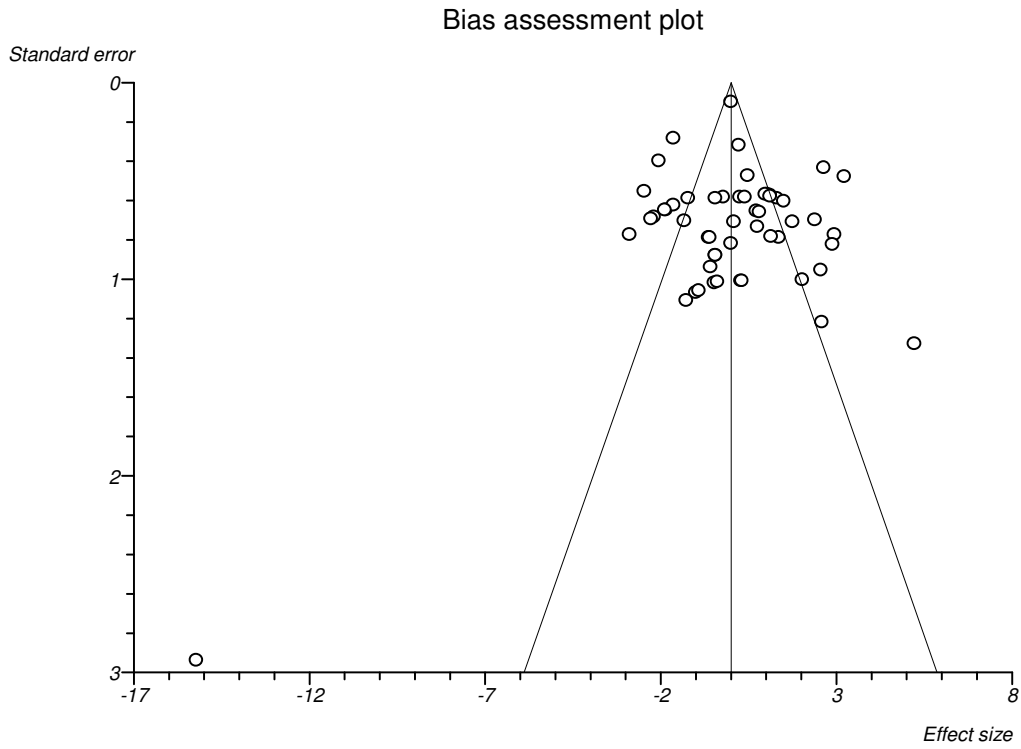


Figure 3: Funnel plot of in-stream structure effect size - standard error relationship. The line perpendicular to the x axis represents pooled effect size, with studies outwith the triangle illustrating positive or negative bias.

Woody debris and population abundance

Presence of woody debris resulted in the largest increase in salmonid population (DL SMD 5.32, z 4.31, $p < 0.001$) when considering all data, including those with imputed variance. (Figure 4). The range of variation in characteristics of the studies resulted in significant heterogeneity in effect size (chi-squared 127.56, df 12, $p < 0.001$). Six individual data points had significant positive effects whilst none had a significant negative effect (Figure 4). Some variation is due to species as *Salvelinus fontinalis* has a bigger significant effect size than data combined across species (DL SMD 17.29, z 3.53, $p < 0.001$) indicating that woody debris has a bigger impact on *Salvelinus fontinalis* than salmonids in general. Analyses of other species were not possible due to small sample sizes.

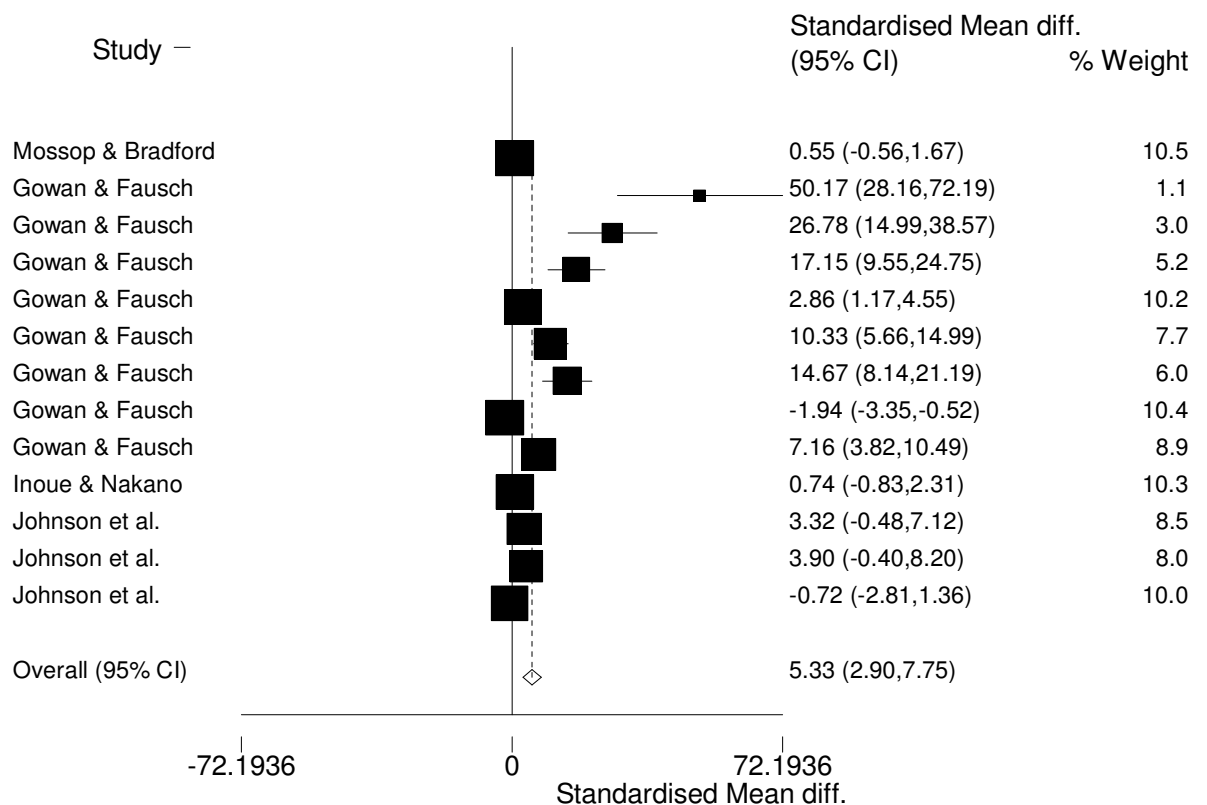


Figure 4: Forrest plot of woody debris population study effect sizes. Solid boxes represent the effect size of individual studies; box size is related to sample size; error bars are 95% confidence intervals; the open diamond is the pooled effect size generated using standardized mean difference random effects meta analysis. Note different axis scales when comparing Forrest plots.

Woody debris and habitat preference

Presence of woody debris resulted in an increase in local salmonid abundance, indicating some habitat preference for woody debris (DL SMD 0.936827 ($z= 2.79$ $p = 0.005$)) (Figure 5). Exclusion of data with imputed variance resulted in a smaller non-significant effect size (DL SMD 0.49706 ($z= 1.46$ $p = 0.146$)). The range of variation in characteristics of the studies resulted in significant heterogeneity in effect size (chi-squared 99.83, $df 13$, $p<0.001$). Six individual data points had significant positive effects whilst none had a significant negative effect (Figure 5). This was weakly related to time (coef 0.08, $z 2.93$, $p 0.003$) and discharge (coef 1.85, $z 3.32$, $p 0.001$), but not stream width (coef 0.104, $z 1.65$, $p 0.1$) indicating that woody debris may provide preferential habitat over longer time periods and at higher discharges. Further heterogeneity was accounted for by species. Sub-group analysis indicated that *Oncorhynchus kisutch* local abundance did not increase significantly in response to woody debris although salmonids in general did (DL SMD 0.899, $z 1.59$, $p 0.111$). Small sample sizes precluded investigation of other species..

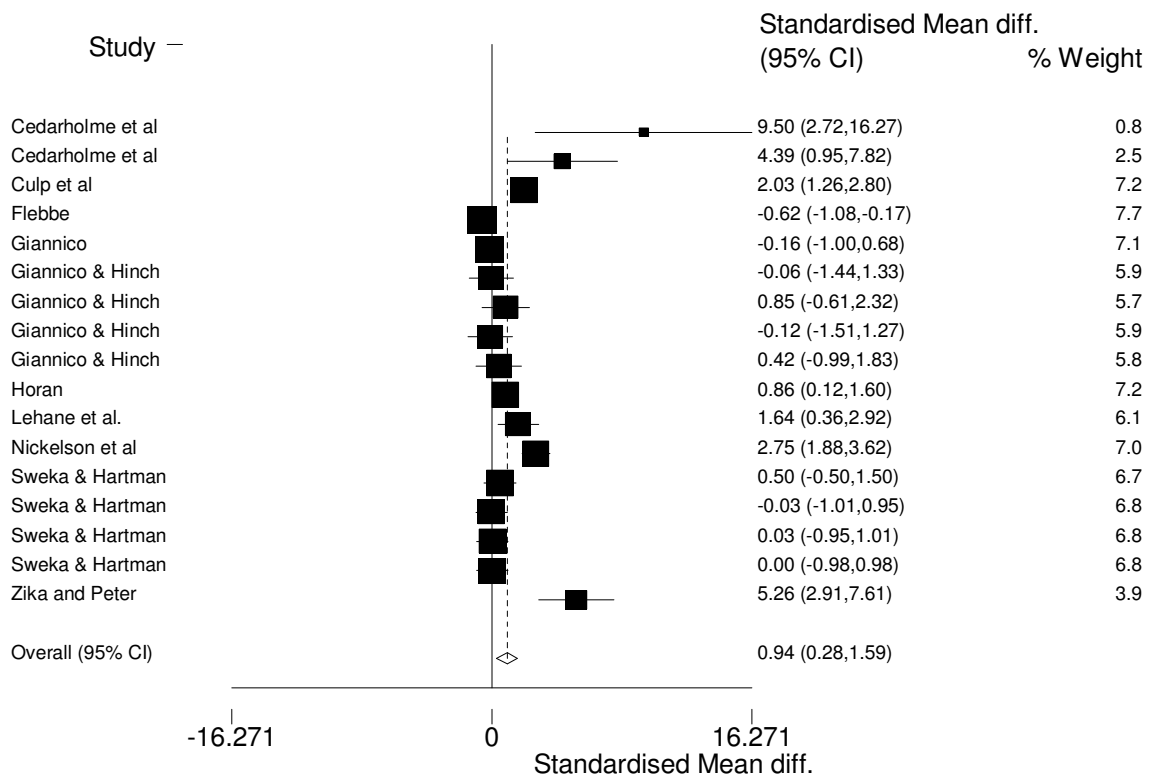


Figure 5: Forrest plot of woody debris habitat preference study effect sizes. Solid boxes represent the effect size of individual studies; box size is related to sample size; error bars are 95% confidence intervals; the open diamond is the pooled effect size generated using standardized mean difference random effects meta-analysis. Note different axis scales when comparing Forrest plots.

Funnel plot asymmetry and the Egger test suggest that there is considerable bias in the woody-debris data set as there are fewer small negative studies than one would expect (Egger bias 3.847427 , $p < 0.0001$) (Figure 6).

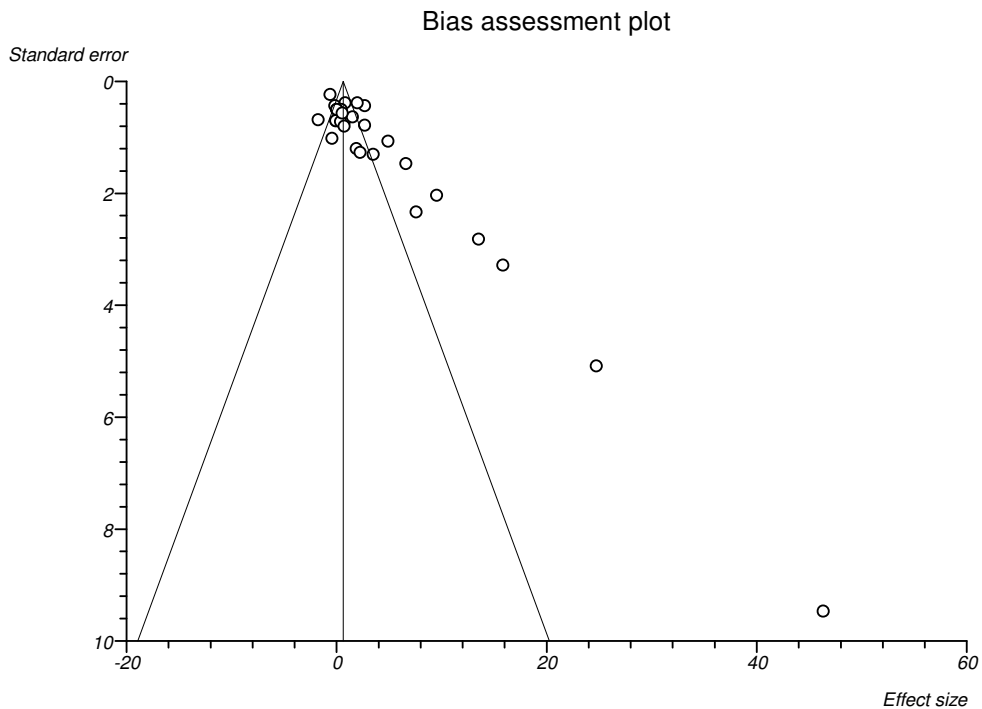


Figure 6: Funnel plot of woody debris effect size - standard error relationship. The line perpendicular to the x axis represents pooled effect size, with studies outwith the triangle illustrating positive or negative bias.

The following table (Table 5) summarises the results of the meta-analyses.

Table 5: Summary of statistical significance of meta-analyses

| Meta-analysis | Statistical significance | Ecological significance |
|---|-----------------------------|-------------------------|
| In-stream structures- population abundance | s (0.566) $p < 0.05$ | ns |
| In-stream structures- habitat preference | ns (-0.47) $p > 0.05$ | ns |
| Woody debris- population abundance | s (5.32) $p < 0.001$ | s |
| Woody debris- habitat preference | s (0.936827) $p < 0.001$ | ns |

ns = not statistically significant

s = statistically significant

() = DL SMD

Statistical significance does not mean that an outcome is ecologically significant.

Cottus gobio

Raw data were provided by Pretty to enhance those provided in Pretty *et al* 2003 allowing comparison of the effects of specific in-stream devices, namely deflectors and riffles, on the bullhead, *Cottus gobio*. Deflectors resulted in no significant change in abundance (DL SMD 0.238, z 0.84, p 0.4) with no significant heterogeneity between data points (.chi-squared 0.51, df 3, p 0.918) (Figure 7a). Riffles resulted in a significant increase in local abundance (DL SMD 0.804, z 2.01, p 0.044) with significant heterogeneity between data points (chi-squared 13.32, df 4, p 0.01) due to the Knapkens *et al* (2002) data point showing a significant positive impact, whereas the Pretty *et al* data points showed no significant impact (Figure 7b).

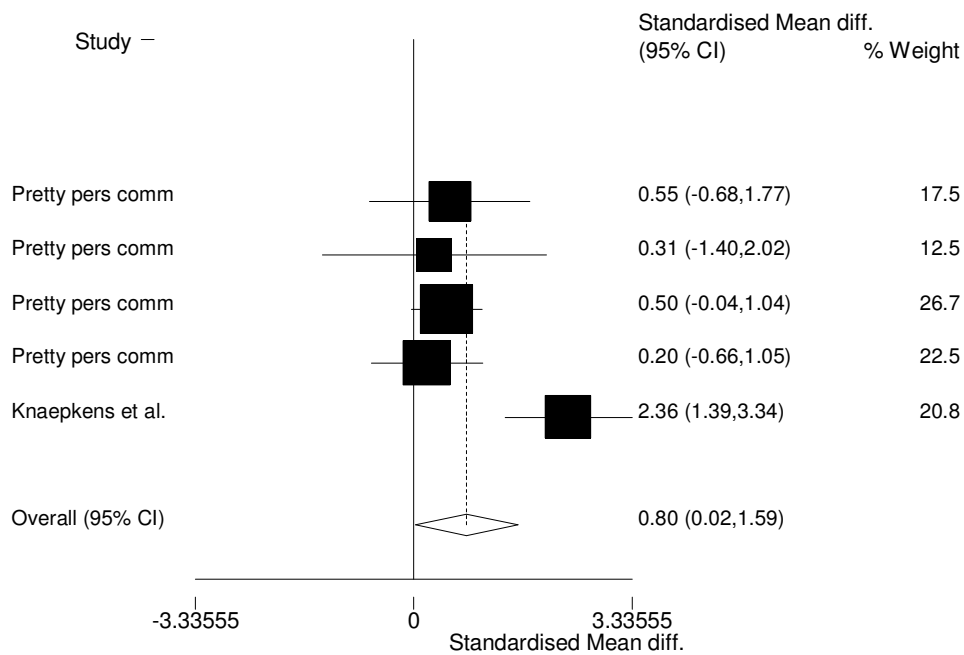
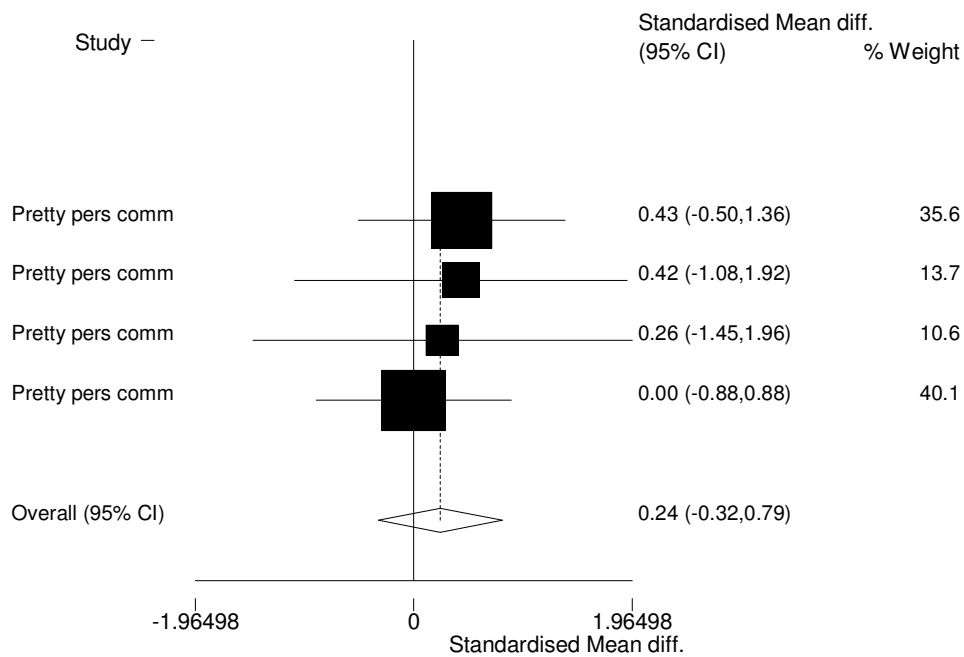


Figure 7: Forrest plot of *Cottus gobio* study effect sizes. The upper plot (a) = deflectors, the lower plot (b) = riffles; Solid boxes represent the effect size of individual studies; box size is related to sample size; error bars are 95% confidence intervals; the open diamond is the pooled effect size generated using standardized mean difference random effects meta analysis. Note different axis scales when comparing Forrest plots.

5. DISCUSSION

5.1 Evidence of effectiveness

This systematic review provides substantial evidence that engineered in-stream structures have little or no ecologically significant impact on salmonid population size, and do not provide a preferred habitat. The overall population analysis for engineered in-stream structures is statistically significant but the effect size is small, reflecting both the small mean differences of the included studies and high variance. Other analyses lack statistical significance. Much of the variance cannot be explained by covariates with the limited data presented (see below).

Some practitioner experience suggests that engineered structures are successful in otherwise healthy waterways (O’Grady, 2006). Water quality and degree of existing modification are considered critical limiting factors which may mask any impact of in-stream habitat remediation (Roni, Cowx and O’Grady pers comm.).

Insufficient and inconsistent reporting of water quality precludes robust investigation but studies reporting high water quality (i.e. Linløkken 1997) do not demonstrate increased effectiveness. This may reflect confounding by other variables such as degree of existing modification.

Studies with a high degree of existing modification (Linløkken 1997, Scruton 1998, Wang 2002 and Quinn & Kwak 2000) demonstrate lower effectiveness than studies with a lesser degree of modification (Binns and Remick 1994; Langford 2001). Thus, engineered in-stream devices are less effective where existing habitat modification is high. As with water quality, lack of standardized reporting and small sample sizes prevent formal analysis. Support for the effectiveness of in-stream structures in otherwise healthy waterways therefore remains speculative.

Available evidence suggests that woody debris has a significant impact on salmonids resulting in increased population abundance. The effect size is large (>5) reflecting the large mean differences and low variance of most studies. There is a lesser, but still significant, positive impact on habitat preference, although exclusion of imputed variance data reduces statistical significance below the 0.05 threshold, probably explained by lack of power (n=6).

Sample sizes are small for analyses of *Cottus gobio*, with only two studies providing four data points for deflectors and five for riffles. The available evidence suggests that riffles provide *C. gobio* with preferential habitat but deflectors do not appear to increase population size. However, the generality of these conclusions is clearly open to question, given the limited work available.

Comparisons between the relative effectiveness of in-stream structures and woody debris can only be made indirectly. Given the lack of direct head to head comparisons, results must be interpreted carefully. Available evidence suggest that woody debris is effective at increasing salmonid populations and provides preferential habitat, whereas engineered in-stream structures are much less effective. Furthermore the effect size for change in salmonid abundance is an order of magnitude higher for woody debris than for engineered in-stream structures. It is possible that the different context of woody debris (generally found in low order, high gradient, mountain streams) and engineered in-stream structures (all streams) may be responsible for the perceived variation in impact; although investigation of reasons for variation suggests otherwise (see below).

5.2 Reasons for variation in effectiveness

There are no significant relationships between the effectiveness of in-stream structures and measured hydrological or ecological variables at a population level, although there is limited evidence that engineered in-stream structures provide preferential habitat at higher discharges. However, the impact of many variables was not investigated because of lack of reporting and small sample sizes. It is interesting to note that other authors have suggested that in-stream structures are more effective at higher discharges (Mitchell *et al* 1998) and lower gradients (Hamilton 1989).

The positive impact of woody debris is especially pronounced for *Salvelinus fontinalis*. Woody debris provides more preferential habitat at longer timescales and higher discharges, but is less effective for *Oncorhynchus kisutch* than other salmonid species. As with in-stream structures, lack of reporting and small sample sizes precluded investigation of all variables of interest, including analysis of other species. It must also be recognised that some of these correlations may be misleading, as numerous study characteristics could account for the differences in effect size. Nevertheless, the results are consistent with other workers who suggest that woody debris is most effective as a habitat refuge at high flow (Bunt *et al* 1999) and over long timescales (Opperman 2004). The apparent variations between salmonid species may be related to differences in age groups. For example, the data for *Oncorhynchus kisutch* were taken from juvenile or smolt counts, and research suggests that salmonids use different habitat types at different stages of their life cycle (APEM Ltd. 1996).

5.3 Concurrence with excluded literature

Literature excluded from the meta-analysis suggests that engineered structures have variable impacts on salmonids whereas literature regarding the physical habitat suggests that favourable habitat conditions should be increased. The former is consistent with the meta-analysis but the latter indicates a discrepancy between biological and physical outcome measures. This suggests that either the beneficial effects of the engineered in-stream structures are being countered by other variables or that the conditions do not improve as expected.

Literature regarding the use of woody debris does suggest that it increases salmonid abundance at both a population, and, especially during some life stages, at a micro-habitat scale. This concurs with the findings of the meta-analyses.

Literature also reports some detrimental effects of woody debris, as it can act as a barrier to migration, provide habitat for predators, and alters hydrological flow. Managers must balance these conflicting trade-offs to achieve suitable outcomes for their site.

5.3 Methodological limitations

There are three possible methodological limitations to this overview that need to be borne in mind: limitations of the original research, extraction of data and publication bias.

The original research synthesised in the analyses is of variable quality. Much currently available data is of inadequate duration, poorly replicated and reported. This problem is exacerbated by the combination of BACI designs, time series data and site comparisons. Numerous methodological factors vary along with ecological and hydrological modifiers, presenting intractable complexity given the sample sizes available.

Data extraction introduces bias where variance is imputed, particularly if the variance is calculated from summary statistics. The method is defensible provided the bias does not overweight the study, but the combination of large numbers of studies with imputed variances remains problematic. We tried to partly address any shortcomings using sensitivity analysis to clarify areas of uncertainty but were hampered by sample size and could not run sensitivity analysis for woody debris population data as only four points from two studies did not have imputed variance.

Although steps were taken to minimize publication bias by searching grey literature, we are aware of literature that exists that has not been captured. It is therefore possible that there are some studies that we have not identified despite our systematic efforts to do so. The Egger Test (Egger *et al.* 1997) uses a regression method to assess the symmetry of funnel plots, and shows evidence of asymmetry, with less favourable results unreported (hence possible publication bias) for woody debris. The practical effect of this is that the magnitude of the effectiveness of woody debris may be smaller than our estimates suggest.

6. REVIEWERS' CONCLUSIONS

6.1 Implications for conservation

Available evidence suggests that engineered in-stream structures do not have an ecologically significant impact on the populations of salmonids, although they may provide preferential habitat where discharge is high ($>6\text{m}^3\text{s}^{-1}$). High levels of heterogeneity between studies suggests that conservation managers may need to

consider other underlying environmental factors when considering the most appropriate action for each site.

Woody debris can increase the population abundance of salmonids, especially *Salvelinus fontinalis*. It may also provide more preferential habitat over time (>4 years) where discharge is high ($>1\text{m}^3\text{s}^{-1}$) but does not appear to provide habitat for *Oncorhynchus kisutch*. Managers need to consider the wider role of woody debris within their sites to assess whether it acts as a barrier to migration or may offer more beneficial effects.

Cottus gobio populations are not increased by deflectors but riffles may provide preferential habitat.

6.2 Implications for research

Much currently available data is of inadequate duration and assesses habitat preference rather than long-term population change. Reach and water-shed scale studies are also rare in comparison to habitat unit studies. The use of independent treatment and controls, replication, and rigorous parameters of abundance should be encouraged.

Numerous confounding variables operate in riverine systems and sample sizes are currently too small to assess the impact of many factors in a robust manner. Further monitoring is required to fully evaluate the potential impact of time, discharge and species. Other hydrological and ecological factors such as stream gradient, proportion of cobbles in the substrate, degree of existing modification, water quality and canopy cover are insufficiently reported and studied, although they are known to impact fish populations.

7. ACKNOWLEDGEMENTS

We would like to acknowledge the support of Mark Diamond and Miran Arahamian and thank them for their encouragement and advice during the review process. Peter Bayley, Ian Cowx, Patricia Flebbe, Guillermo Giannico, Nils Arne Hvidsten, E. Eric Knudsen, Terry Langford, Carl Mesick, Nigel Milner, Martin O'Grady, Geoff Petts, James Pretty, Phil Roni, Terry Rowell, John Sweka and Doug Thompson also provided data and feedback and shared their knowledge with us. Thanks also to colleagues within the CEBC. This review was funded by the UK Natural Environment Research Council.

8. POTENTIAL CONFLICTS OF INTEREST AND SOURCES OF SUPPORT

No potential conflicts of interest reported. Financial support from NERC Knowledge-transfer/ Environment Agency funding

9. REFERENCES

- Allouche, S. (2002) Nature and functions of cover for riverine fish. *Bulletin Francais De La Peche Et De La Pisciculture*:365-366 297-324.
- APEM Ltd (1996) Restoration of Riverine Salmon Habitats - A Guidance Manual. In *Fisheries Technical Manual 4*, Environment Agency.
- Armstrong, J. D., Kemp, P. S., Kennedy, G. J. A., Ladle, M. and Milner, N. J. (2003) Habitat requirements of Atlantic salmon and brown trout in rivers and streams. *Fisheries Research*, **62** 143-170.
- Bash, J. and Ryan, C. (2002) Stream Restoration and Enhancement Projects: Is Anyone Monitoring? *Environmental Management*, **29** 877-885.
- Bayley, P. (2002) A review of studies on responses of salmon and trout to habitat change, with potential for application in the Pacific Northwest. *Report to the Washington State Independent Science Panel, Olympia, WA*.
- Biggs, J., Corfield, A., Gron, P., Hansen, H., Walker, D., Whitfield, M. and Williams, P. (1998) Restoration of the Rivers Brede, Cole and Skerne: A joint Danish and British EU-LIFE demonstration project, V- Short-term impacts on the conservation value of aquatic macroinvertebrate and macrophyte assemblages. *Aquatic Conservation: Marine and Freshwater Ecosystems*, **8** 241-255.
- Bilby, R. E., Fransen, B.R., (1992) Effect of habitat enhancement and canopy removal on the fish community of a headwater stream. *Northwest Science*, **66** 137.
- Binns, N. A. (1994) Long-term responses of trout and macrohabitats to habitat management in a Wyoming headwater stream. *North American Journal of Fisheries Management*, **14** 87-98.
- Binns, N. A. (2004) Effectiveness of habitat manipulation for wild salmonids in Wyoming streams. *North American Journal of Fisheries Management*, **24** 911-921.
- Binns, N. A. and Remmick, R. (1994) Response of bonnevillie cutthroat trout and their habitat to drainage-wide habitat management at Huff Creek, Wyoming. *North American Journal of Fisheries Management*, **14** 669-680.
- Bjornn, T. C., Kirking, S.C., Meehan, W.R., (1991) Relation of cover alterations to the summer standing crop of young salmonids in small southeast Alaska streams. *Transactions of the American Fisheries Society*, **120** 562-570.
- Booker, D. J. and Dunbar, M. J. (2004) Application of physical habitat simulation (PHABSIM) modelling to modified urban river channels. *River Research and Applications*, **20** 167-183.

- Brooks, A. P. and Peter C. Gehrke, J. D. J., Tim B. Abbe, (2004) Experimental reintroduction of woody debris on the Williams River, NSW: geomorphic and ecological responses. *River Research and Applications*, **20** 513-536.
- Brusven, M. A., Meehan, W.R., Ward, J.F., (1986) Summer use of simulated undercut banks by juvenile chinook salmon in an artificial Idaho channel. *North American Journal of Fisheries Management*, **6** 32-37.
- Bryant, M. D., Edwards, R. T. and Woodsmith, R. D. (2005) An approach to effectiveness monitoring of floodplain channel aquatic habitat: salmonid relationships. *Landscape and Urban Planning*, **72** 157-176.
- Bunt, C. M., Cooke, S. J., C. Katopodis and R. Scott Mckinley (1999) Movement and summer habitat of brown trout (*Salmo trutta*) below a pulsed discharge hydroelectric generating station. *Regulated Rivers: Research & Management*, **15** 395-403.
- Capra, H., C. Sabaton, V. Gouraud, Y. Souchon, P. Lim, (2003) A population dynamics model and habitat simulation as a tool to predict brown trout demography in natural and bypassed stream reaches. *River Research and Applications*, **19** 551-568.
- Cederholm, C. J., Bilby, R. E., Bisson, P. A., Bumstead, T. W., Fransen, E. R., Scarlett, W. J. and Ward, J. W. (1997) Response of juvenile coho salmon and steelhead to placement of large woody debris in a coastal Washington stream. *North American Journal of Fisheries Management*, **17** 947-963.
- Champoux, O., Biron, P. M. and Roy, A. G. (2003) The Long-Term Effectiveness of Fish Habitat Restoration Practices: Lawrence Creek, Wisconsin. *Annals of the Association of American Geographers*, **93** 42-54.
- Connolly, P. J., and Jezorek, I.G., (2001) Juvenile and resident fish populations in the Wind River watershed. Volume III, Report D In; Connolly, P.J. ed. *Wind River watershed project 1999 Annual Report*, Project number 1998-019-00. Prepared for: Bonneville Power Administration, Portland, Oregon
- Connor, E. J. and Pflug, D. E. (2004) Changes in the distribution and density of pink, chum, and Chinook salmon spawning in the upper Skagit River in response to flow management measures. *North American Journal of Fisheries Management*, **24** 835-852.
- Connor, W., Burge, H., Yearsley, J. and Bjornn, T. (2003) Influence of Flow and Temperature on Survival of Wild Subyearling Fall Chinook Salmon in the Snake River. *North American Journal of Fisheries Management*, **23** 362-375.
- Cooper, H. and Hedges, L.V. (1994) (eds.) *The Handbook of Research Synthesis*. Russell Sage Foundation, New York.
- Coulston, P. and Maughan, O. (1983) Effects of removal of in-stream debris on trout populations. *J. Elisha Mitchell Sci. Soc.*, **99** 78-85.

- Covington, J. S. and Hubert, W. A. (2003) Trout population responses to restoration of stream flows. *Environmental Management*. **31** 135-46
- Cowx, I. G. and van Zyll de Jong, M. (2004) Rehabilitation of freshwater fisheries: tales of the unexpected? *Fisheries Management and Ecology*, **11** 243-249.
- Cowx, I. G., Welcomme, R.L. (1998) Rehabilitation of rivers for fish., European Inland Fisheries Advisory Commission, FAO, Rome.
- Cowx, I. H., JP (2003) Monitoring the Bullhead, *Cottus gobio*. In *Conserving Natura 2000 Rivers Monitoring Series No. 4*, English Nature, Peterborough.
- Culp, J. M., Scrimgeour, G.J., Townsend, G.D., (1996) Simulated fine woody debris accumulations in a stream increase rainbow trout fry abundance. *Transactions of the American Fisheries Society*, **125** 472-479.
- De Jong M.C. van Zyll, I. G. C., David A. Scruton, (1997) An evaluation of in-stream habitat restoration techniques on salmonid populations in a Newfoundland stream. *Regulated Rivers: Research & Management*, **13** 603-614.
- de la Hoz Franco, E. and Budy, P. (2005) Effects of biotic and abiotic factors on the distribution of trout and salmon along a longitudinal stream gradient. *Environmental Biology of Fishes*, **72** 379-391.
- Deeks, J.J., Altman, D.G. and Bradburn, M.J. (2001) Statistical methods for examining heterogeneity and combining results from several studies in meta-analysis. In, *Systematic Reviews in Health Care: Meta-analysis in Context*. M. Egger, G. Davey-Smith and D.G. Altman. (Eds.) pp. 285-312. (British Medical Journal Publishing Group, London.)
- DerSimonian, R. and Laird, N. (1986) Meta-analysis in clinical trials. *Controlled Clinical Trials*, **7** 177-188.
- Egger, M., Davey-Smith, G., Schneider, M. and Minder, C. (1997) Bias in meta-analysis detected by a simple graphical test *British Medical Journal* **315** 629-34.
- Environment Agency (2003) *River Wye Salmon Action Plan*. Environment Agency, pp. 29.
- Erman, D. C. and Mahoney, D. (1983) *Recovery after logging in streams with and without buffer strips in Northern California*. California Water Resources Centre, University of California, Davis, California, pp. 50 pp.
- Everest, F., Sedell, J., Reeves, G. and Wolf, J. (1985) *Fisheries enhancement in the Fish Creek basin--an evaluation of in-channel and off-channel projects*, 1984. Vol. 228 U. S. Dept. of Energy, Bonneville Power Administration, Division of Fish and Wildlife, Portland, OR.

- Everest, F. H., Reeves, G.H., Sedell, J.R., Wolfe, J., Hohler, D. and Heller, D. (1985) *Abundance, behaviour, and habitat utilization by coho salmon and steelhead trout in Fish Creek, Oregon, as influenced by habitat enhancement*. Annual report. Funded by Bonneville Power Administration, Division of Fish and Wildlife, Portland, Oregon. pp. 108
- Fausch, K. D. and Northcote, T. G. (1992) Large woody debris and salmonid habitat in a small coastal British Columbia stream. *Canadian Journal of Fisheries & Aquatic Sciences*, **49** 682-693.
- Finlayson, B., Somer, W., Duffield, D., Propst, D., Mellison, C., Pettengill, T., Sexauer, H. and Skaar, D. (2005) Native inland trout restoration on national forests in the western United States: Time for improvement? *Fisheries Management and Ecology*, **30** 10-19.
- Fjellheim, A., Barlaup, B. T., Gabrielsen, S. E. and Raddum, G. G. (2003) Restoring fish habitat as an alternative to stocking in a river with strongly reduced flow. *Ecology and Hydrobiology*, **3** 17-26.
- Flebbe, P. A. (1999) Trout use of woody debris and habitat in Wine Spring Creek, North Carolina. *Forest Ecology and Management*, **114** 367-376.
- Gargan, P. G., O'Grady, M.F., Delanty, K., Igoe, F., Byrne, C., (2002) The effectiveness of habitat enhancement on Salmon and Trout stocks in streams in the Corrib Catchment. In *13th International Salmonid Habitat Enhancement Workshop*, Central Fisheries Board, Westport, Co. Mayo, Ireland.
- Giannico, G. (2000) Habitat selection by juvenile coho salmon in response to food and woody debris manipulations in suburban and rural stream sections. *Canadian Journal of Fisheries and Aquatic Sciences*, **57** 1804-1813.
- Giannico, G. R. and Hinch, S. G. (2003) The effect of wood and temperature on juvenile coho salmon winter movement, growth, density and survival in side-channels. *River Research and Applications*, **19** 219-231.
- Glen, D. I. (2002) Recovery of Salmon and Trout following habitat enhancement works: review of case studies 1995-2002. In *13th Salmonid Habitat Enhancement Workshop*, Westport, Co. Mayo.
- Goldberg, H., Rublee, B. and Mitchell, A. C. (1995) Development of Fish Habitat for Mitigation Below Hydro Diversions. *Journal of Energy Engineering-Asce*, **121** 52-72.
- Gore, J., Crawford, D. and Addison, D. (1998) An analysis of artificial riffles and enhancement of benthic community diversity by physical habitat simulation (PHABSIM) and direct observation. *Regulated Rivers: Research & Management*, **14** 69-77.

- Gore, J. A. and Hamilton, S. W. (1996) Comparison of flow-related habitat evaluations downstream of low-head weirs on small and large fluvial ecosystems. *Regulated Rivers: Research & Management*, **12** 459-469
- Gowan, C. (1995) Trout responses to habitat manipulation in streams at individual and population scales. Colorado State University, pp. 232.
- Gowan, C. and Fausch, K. D. (2006) Long-term demographic responses of trout populations to habitat manipulation in six Colorado streams. *Ecological Applications*, **6** 931-946.
- Gurevitch, J., and Hedges, L.V. (1999) Statistical issues in ecological meta-analyses. *Ecology*, **80** 1142-1149.
- Gurnell, A., Tockner, K., Edwards, P., and Petts G. (2005) Effects of deposited wood on biocomplexity of river corridors. *Frontiers in Ecology and the Environment*. **3** 377–382
- Hagen, J. and Baxter, J.S., (2004) Conservation status of Salmo River Rainbow Trout: radio telemetry investigations of habitat use and abundance. Prepared for Columbia Basin Fish and Wildlife Compensation Programme.
- Hale, J. (1969) An evaluation of trout stream habitat improvement in a north shore tributary of Lake Superior. *Minnesota Fisheries Investigations*, **5** 37-50.
- Hamilton, J. B. (1989) Response of Juvenile Steelhead to In-stream Deflectors in a High Gradient Stream. In: R.E. Gresswell, B.A. Barton, and J.L. Kershner (eds); Practical approaches to riparian resources management. American Fisheries Society, Montana Chapter, Bethesda, MD. pp 149-157.
- Hartzler, J. R. (1983) The effects of half-log covers on angler harvest and standing crop of brown trout in McMichaels Creek, Pennsylvania. *North American journal of fisheries management*, **3** 228-238.
- Harvey, B. C. (1998) Influence of large woody debris on retention, immigration, and growth of coastal cutthroat trout (*Oncorhynchus clarki clarki*) in stream pools. *Canadian Journal of Fisheries and Aquatic Sciences*, **55** 1902-1908.
- Hendry, K., Cragg-Hine, D., O'Grady, M., Sambrook, H. and Stephen, A. (2003) Management of habitat for rehabilitation and enhancement of salmonid stocks. *Fisheries Research*, **62** 171-192.
- Holmes, N. (1998) A review of river rehabilitation in the Uk, 1990-1996. In *Technical Report W175*, Environment Agency.
- House, R. N. A. J. o. F. M., pp. 272-281 (1996) An evaluation of stream restoration structures in a coastal Oregon stream, 1981-1993. *North American Journal of Fisheries Management*, **16** 272-281.

Hubert, W. A., Joyce, M.P (2005) Habitat associations of age-0 cutthroat trout in a spring stream improved for adult salmonids. *Journal of Freshwater Ecology*, **20** 277-286.

Hunt, R. (1969) Effects of habitat alteration on production, standing crops and yield of brook trout in Lawrence Creek, Wisconsin. In *Symposium on salmon and trout in streams*, ed. T. G. Northeote, 281–312. H. R. MacMillan Lectures in Fisheries. Vancouver: University of British Columbia.

Hunt, R. (1974) *Annual production by brook trout in Lawrence Creek during eleven successive years*. Wisconsin Department of Natural Resources Technical Bulletin No, **82**.

Hunt, R. (1976) A long-term evaluation of trout habitat development and its relation to improving management-related research. *Transactions Of the American Fisheries Society*, **105** 361-364.

Hunt, R. L. (1976a) In-stream habitat improvement of trout habitat. *Trout: Supplement Winter 1976* 26-31.

Hunt, R. L. (1992) *Evaluation of Trout Habitat Improvement Structures in three high-gradient streams in Wisconsin*. Department of Natural Resources, Madison, Wisconsin, pp. 40p.

Huusko, A. and Yrjänä, T. (1997) Effects of in-stream enhancement structures on brown trout, *Salmo trutta* L., habitat availability in a channelized boreal river: A PHABSIM approach. *Fisheries Management and Ecology*, **4** 453-466.

Hvidsten, N. A. and Johnsen, B. O. (1992) River bed construction: impact and habitat restoration for juvenile Atlantic salmon, *Salmo salar* L., and brown trout, *Salmo trutta* L. *Aquaculture & Fisheries Management*, **23** 489-498.

Inoue, M. and Nakano, S., (1998) Effects of woody debris on the habitat of juvenile masu salmon (*Oncorhynchus masou*) in northern Japanese streams. *Freshwater Biology*, **40** 1-16.

Johnson, S. L., Rodgers, J. D., Solazzi, M. F. and Nickelson, T. E. (2005) Effects of an increase in large wood on abundance and survival of juvenile salmonids (*Oncorhynchus* spp.) in an Oregon coastal stream. *Canadian Journal of Fisheries and Aquatic Sciences*, **62** 412-424.

Jones, N. E., Tonn, W. M., Scrimgeour, G. J. and Katopodis, C. (2003) Productive capacity of an artificial stream in the Canadian Arctic: assessing the effectiveness of fish habitat compensation. *Canadian Journal of Fisheries and Aquatic Sciences*, **60** 849-863.

Jutila, E., Ahvonen, A. and Julkunen, M. (2001) In-stream and catchment characteristics affecting the occurrence and population density of brown trout, *Salmo trutta* L., in forest brooks of a boreal river basin. *Fisheries Management and Ecology*, **8** 501-511.

- Kauffman, J., Beschta, R., Otting, N. and Lytjen, D. (1997) An ecological perspective of riparian and stream restoration in the western United States. *Fisheries*, **22** 12-24.
- Kauffman, J. and Krueger, W. (1984) Livestock Impacts on Riparian Ecosystems and Streamside Management Implications. *Journal of Range Management*, **37**5.
- Kauffman, J.B., Beschta, R.L. and Platts, W. S. (1993). *Fish habitat improvement projects in the Fifteenmile Creek and Trout Creek basins of central Oregon: Field review and management recommendations*. USDE, Bonneville Power Administration, DOE/PB-18955-1, July 1993. pp. 52.
- Keeley, E., Slaney, P.A. and Zaldokas, D. (1996) Estimates of production benefits for salmonid fishes from stream restoration initiatives. In *Watershed Restoration Management Report No.4*, Ministry of Environment, Lands and Parks, and Ministry of Forests, Province of British Columbia, pp. 22.
- Keim, R. F., Skaugset, A. E. and Bateman, D. S. (2002) Physical aquatic habitat II. Pools and cover affected by large woody debris in three western Oregon streams. *North American Journal of Fisheries Management*, **22**:1 151-164.
- Keith, R. M., Bjornn, T.C., Meehan, W.R., Hetrick, N.J., Brusven, M.A., (1991) Response of juvenile salmonids to riparian and in-stream cover modifications in small streams flowing through second-growth forests of southeast Alaska. *Transactions of the American Fisheries Society*, **127** 889-907.
- Knaepkens, G., Bruyndoncx, L., Bervoets, L. and Eens, M. (2002) The presence of artificial stones predicts the occurrence of the European bullhead (*Cottus gobio*) in a regulated lowland river in Flanders (Belgium). *Ecology of Freshwater Fish*, **11** 203-206.
- Knapp, R. A., Vredenburg, V. T. and Matthews, K. R. (1998) Effects of Stream Channel Morphology on Golden Trout Spawning Habitat and Recruitment. *Ecological Applications*, **8** 1104-1117.
- Knudsen, E. E., and Dilley, S.J., (1987) Effects of riprap bank reinforcement on juvenile salmonids in four western Washington streams. *Canadian Journal of Fisheries and Aquatic Science*, **7** 351-356.
- Koed, A., Baktoft, H., Bak, B.D., (2006) Causes of mortality of Atlantic Salmon (*Salmo salar*) and Brown Trout (*Salmo trutta*) smolts in a restored river and its estuary. *River Research and Applications*, **22** 69-78.
- Kondolf, G. M., Vick, J. C. and Ramirez, T. M. (1996) Salmon spawning habitat rehabilitation in the Merced, Tuolumne, and Stanislaus Rivers, California: An evaluation of project planning and performance. *Report - University of California Water Resources Center*, **1996** 90.

- Lacey, R. W. J. and Millar, R. G. (2004) Reach scale hydraulic assessment of in-stream salmonid habitat restoration. *Journal of the American Water Resources Association*, **40** 1631-1644.
- Lamouroux, N. and Capra, H. (2002) Simple predictions of in-stream habitat model outputs for target fish populations. *Freshwater Biology*, **47** 1543-1556.
- Langford, T. E. L., Somes, J.R., Bowles, F. (2001) *Effects of physical restructuring of channels on the flora and fauna of three Wessex rivers*. Pices Conservation Ltd, pp. 107.
- Larson, M. G., Booth, D.B., Morley, S.A., (2001) Effectiveness of large woody debris in stream rehabilitation projects in urban basins. *Ecological Engineering*, **18** 211-226.
- Legalle, M., Mastrorillo, S., Santoul, F. and Cereghino, R. (2005) Ontogenetic microhabitat shifts in the bullhead, *Cottus gobio* L., in a fast flowing stream. *International Review of Hydrobiology*, **90** 310-321.
- Legalle, M., Santoul, F., Figuerola, J., Mastrorillo, S. and Cereghino, R. (2005) Factors influencing the spatial distribution patterns of the bullhead (*Cottus gobio* L., Teleostei Cottidae): a multi-scale study. *Biodiversity and Conservation*, **14** 1319-1334.
- Lehane, B. M., Giller, P. S., O'halloran, J., Smith, C. and Murphy, J. (2002) Experimental provision of large woody debris in streams as a trout management technique. *Aquatic Conservation-Marine and Freshwater Ecosystems*, **12** 289-311.
- Linløkken, A. (1997) Effects of in-stream habitat enhancement on fish populations of a small Norwegian stream. *Nordic Journal of Freshwater Research*, **73** 50-59.
- Maki-Petays, A., Vehanen, T. and Muotka, T. (2000) Microhabitat use by age-0 brown trout and grayling: Seasonal responses to streambed restoration under different flows. *Transactions of the American Fisheries Society*, **129** 771-781.
- Marmorek, D. R., Parnell, L. J., M., P., Pinkham, C., Alexander, C. A. D., Peters, C. N., Hubble, J., C.M., P. and T.R., F. (2004) A multiple watershed approach to assessing the effects of habitat restoration actions on anadromous and resident fish populations., (Ed, Prepared for ESSA Technologies Ltd., V., B.C. for Bonneville Power Administration, Portland, OR), pp. 420..
- McGrath, C. (2003) *Biological Opinion on Potential Effects of Whitewater Parks on In-Stream Trout Habitat*. Submitted to Recreational Engineering and Planning, Inc., Boulder, CO. pp. 12.
- McPhail, J. D., Baxter, J.S. (1996) *A review of Bull Trout (Salvelinus confluentus) life history and habitat use in relation to compensation and improvement opportunities*. Department of Zoology, U.B.C., Vancouver, pp. 39.

- Mesick, C. F. (1995) Response of brown trout to streamflow, temperature, and habitat restoration in a degraded stream. *Rivers*, **5** 75-95.
- Mitchell, J., Mckinley, R. S., Power, G. and Scruton, D. A. (1998) Evaluation of Atlantic salmon parr responses to habitat improvement structures in an experimental channel in Newfoundland Canada. *Regulated Rivers: Research and Management*, **14** 25-39.
- Moerke, A. H. and Lamberti, G. A. (2003) Responses in fish community structure to restoration of two Indiana streams. *North American Journal of Fisheries Management*, **23** 748-759.
- Mossop, B. and Bradford, M. J. (2004) Importance of large woody debris for juvenile chinook salmon habitat in small boreal forest streams in the upper Yukon River basin, Canada. *Canadian journal of forest research*, **34** 1955-1966.
- Mott, N (2005) 'Managing Woody Debris in Rivers and Streams'. Staffordshire Wildlife Trust, UK. Stafford, George Street Press.
- Neumann, R. M. and Wildman, T. L. (2002) Relationships between trout habitat use and woody debris in two southern New England streams. *Ecology of Freshwater Fish*, **11** 240-250.
- Nickelson, T. E., Solazzi, M. F., Johnson, S. L. and Rodgers, J. D. (1992) Effectiveness of selected stream improvement techniques to create suitable summer and winter rearing habitat for juvenile coho salmon (*Oncorhynchus kisutch*) in Oregon coastal streams. *Canadian Journal of Fisheries & Aquatic Sciences*, **49** 790-794.
- Nicol, S. J., Lieschke, J. A., Lyon, J. P. and Koehn, J. D. (2004) Observations on the distribution and abundance of carp and native fish, and their responses to a habitat restoration trial in the Murray River, Australia. *New Zealand Journal of Marine and Freshwater Research*, **38** 541-551.
- Nislow, K. H., Folt, C. L. and Parrish, D. L. (1999) Favorable foraging locations for young Atlantic salmon: Application to habitat and population restoration. *Ecological Applications*, **9** 1085-1099.
- O'Grady, M. (1995) The enhancement of salmonid rivers in the Republic of Ireland. *Journal of the Institution of Water and Environmental Management.*, **9** 164-172.
- O'Grady, M., Gargan, P., Delanty, K., Igoe, F., Byrne, C., (2002) Observations in relation to changes in some physical and biological features of the Glenglosh River following bank stabilisation. In *13th International Salmonid Habitat Enhancement Workshop*, Central Fisheries Board, Westport, Co. Mayo, Ireland.

- O'Grady (2006) *Channels and challenges: the enhancement of salmonid rivers*. Ireland: Central Fisheries Board.
- Opperman, J. J. and Merenlender, A. M. (2004) The effectiveness of riparian restoration for improving in-stream fish habitat in four hardwood-dominated California streams. *North American Journal of Fisheries Management*, **24** 822-834.
- Opperman, J. J., Merenlender, A., Lewis, D., (2006) *Maintaining wood in streams: a vital action for fish conservation*. Division of Agriculture and Natural Resources, University of California, California, USA.
- Ortlepp, J. and Murle, U. (2003) Effects of experimental flooding on brown trout (*Salmo trutta fario* L.): The River Spol, Swiss National Park. *Aquatic Sciences*, **65** 232-238.
- Oscoz, J., Leunda, P. M., Miranda, R., Garc a-Fresca, C., Campos, F. and Escala, M. C. (2005) River channelization effects on fish population structure in the Larraun river (Northern Spain). *Hydrobiologia*, **543** 191-198.
- Pess, G.R., Liermann, M., McHenry, M., Bennett, T., Peters, R., Kiffney, P. and Coe, H. (2005) *Juvenile and adult salmonid response to the placement of logjams in the Elwha and Stillaguamish Rivers: preliminary results*. Report submitted to Stillaguamish Tribe of Indians, Lower Elwha Klallam Tribe and Washington Trout. pp. 49.
- Pretty, J. L., Harrison, S. S. C., Shepherd, D. J., Smith, C., Hildrew, A. G. and Hey, R. D. (2003) River rehabilitation and fish populations: assessing the benefit of in-stream structures. *Journal of Applied Ecology*, **40** 251-265.
- Pusey, B. J. and Arthington, A. H. (2003) Importance of the riparian zone to the conservation and management of freshwater fish: a review. *Marine and Freshwater Research*, **54** 1-16.
- Quinn, J. W. and Kwak, T. J. (2000) Use of rehabilitated habitat by brown trout and rainbow trout in an Ozark tailwater river. *North American Journal of Fisheries Management*, **20** 737-751.
- Raastad, J. E., Lillehammer, A., Lillehammer, L., Kaasa, H. and Eie, J. A. (1993) Effect of habitat improvement on Atlantic salmon in the regulated River Suldalslagen. *Regulated Rivers: Research & Management*, **8** 95-102.
- Rich, C. F., McMahon, T. E., Rieman, B. E. and Thompson, W. L. (2003) Local-habitat, watershed, and biotic features associated with bull trout occurrence in Montana streams. *Transactions of the American Fisheries Society*, **132** 1053-1064.
- Rieman, B., Peterson, J. T., Clayton, J., Howell, P., Thurow, R., Thompson, W. and Lee, D. (2001) Evaluation of potential effects of federal land management

- alternatives on trends of salmonids and their habitats in the interior Columbia River basin. *Forest Ecology and Management*, **153** 43-62.
- Roni, P. and Quinn, T.P. (2001) Density and size of juvenile salmonids in response to placement of large woody debris in western Oregon and Washington streams. *Canadian Journal of Fisheries and Aquatic Science*. **58** 282-292
- Roni, P. (2002) Habitat use by fishes and pacific giant salamanders in small western Oregon and Washington streams. *Transactions of the American Fisheries Society*, **131** 743-761.
- Roni, P., Beechie, T.J., Bilby, R.E., Leonetti, F.E., Pollock, M.M., Pess, G.R. (2002) A review of stream restoration techniques and a hierarchical strategy for prioritizing restoration in Pacific Northwest watersheds. *North American Journal of Fisheries Management*. **22** 1-20
- Roni, R., Hanson, K., Beechie, T., Pess, G., Pollock, M., Bartley, D.M., (2005) Habitat rehabilitation for inland fisheries: global review of effectiveness and guidance for rehabilitation of freshwater ecosystems. In *FAO Fisheries Technical Paper 484*, FAO, Rome.
- Rosenfeld, J. S. and Huato, L. (2003) Relationship between large woody debris characteristics and pool formation in small coastal British Columbia streams. *North American Journal of Fisheries Management*, **23** 928-938.
- Schmetterling, D. A., Clancy, C. G. and Brandt, T. M. (2001) Effects of riprap bank reinforcement on stream salmonids in the Western United States. *Fisheries*, **26** 6-13.
- Scruton, D., Anderson, T. and King, L. (1998) Pamehac Brook: A case study of the restoration of a Newfoundland, Canada, river impacted by flow diversion for pulpwood transportation. *Aquatic Conservation: Marine and Freshwater Ecosystems*, **8** 145-157.
- Sharma, R. and Hilborn, R. (2001) Empirical relationships between watershed characteristics and coho salmon (*Oncorhynchus kisutch*) smolt abundance in 14 western Washington streams. *Canadian Journal of Fisheries and Aquatic Sciences*, **58** 1453-1463.
- Sharp, S. (1998) Meta-analysis regression: statistics, biostatistics, and epidemiology. *Stata Technical Bulletin*. **42** 16-22.
- Shields, F. D. J. (1998) Addition of spurs to stone toe protection for warmwater fish habitat rehabilitation. *Journal of the American Water Resources Association*, **34** 1427-1436.
- Smith, D. L., Brannon, E.L., Odeh, M. (2005) Response of juvenile rainbow trout to turbulence produced by prismatic shapes. *Transactions of the American Fisheries Society*, **134** 741-753.

Scheiner and Gurevich (2001) (eds.) *Design and Analysis of ecological experiments*. Oxford University Press, New York.

Stata Corporation, (2003) *Stata statistical software: release 8.2*. College Station, TX: Stata Corporation.

Summers, D., Giles, N. and Willis, DJ (1996) Restoration of Riverine Trout Habitats - a Guidance Manual. In *The Game Conservancy Trust Fisheries Technical Manual 1*, Environment Agency.

Summers, D. G., N. and Willis, DJ (1997) Restoration of Riverine Trout Habitats. Environment Agency.

Sundbaum, K. (2001) Importance of woody debris for stream dwelling brown trout (*Salmo trutta* L.). In *Sveriges Lantbruksuniversitet, Vattenbruksinstitutionen*, Umeå.

Sundbaum, K., Naslund, I., (1998) Effects of woody debris on the growth and behaviour of brown trout in experimental stream channels. *Canadian Journal of Zoology*, **76** 56-61.

Swales, S., O'Hara, K., (1983) A short- term study of the effects of a habitat improvement programme on the distribution and abundance of fish stocks in a small lowland river in Shropshire. *Fisheries Management*, **14** 134-144.

Sweka, J. A. and Hartman, K. J. (2006) Effects of large woody debris addition on stream habitat and brook trout populations in Appalachian streams. *Hydrobiologia*, **559** 363-378.

Tarzwel, C. (1938) Factors influencing fish food and fish production in Southwestern streams. *American Fisheries Society*, **67** 246-255.

Thompson, D. M. (2002) Long-Term Effect of In-stream Habitat-Improvement Structures on Channel Morphology Along the Blackledge and Salmon Rivers, Connecticut, USA. *Environmental Management*, **29** 250-265.

Thompson, D. M. (2006) Did the pre-1980 use of in-stream structures improve streams? A reanalysis of historical data. *Ecological Applications*, **16** 784-796.

Thompson, S,G, and Sharp, S.J. (1999). Explaining heterogeneity in meta-analysis: a comparison of methods. *Statistics in Medicine*, **18** 2693-708.

VanDusen, P. J., Huckins, C. J. E. and Flaspohler, D. J. (2005) Associations among selection logging history, brook trout, macroinvertebrates, and habitat in northern Michigan headwater streams. *Transactions of the American Fisheries Society*, **134** 762-774.

Vehanen, T., Huusko, A., Yrjana, T., Lahti, M. and Maki-Petays, A. (2003) Habitat preference by grayling(*Thymallus thymallus*) in an artificially modified,

hydropeaking riverbed: a contribution to understand the effectiveness of habitat enhancement measures. *Journal of Applied Ichthyology*, **19** 15-20.

Wang, L. Z., Lyons, J. and Kanehl, P. (2002) Effects of watershed best management practices on habitat and fish in Wisconsin streams. *Journal of the American Water Resources Association*, **38** 663-680.

Wu, J. J., Adams, R. M. and Boggess, W. G. (2000) Cumulative effects and optimal targeting of conservation efforts: Steelhead trout habitat enhancement in Oregon. *American Journal of Agricultural Economics*, **82** 400-413.

Yrjana, T., Erkinaro, J., Juntunen, K., Maki-Petays, A., (2002) Baltic salmon enhancement programmes in humic lowland rivers in Northern Finland. In *13th Salmonid Habitat Enhancement Workshop*, Westport, Co. Mayo.

Zika, U. and Peter, A. (2002) The introduction of woody debris into a channelized stream: Effect on trout populations and habitat. *River Research and Applications*, **18** 355-366.

10. APPENDICES

APPENDIX 1 – DATA EXTRACTION FORMS FOR STUDIES INCLUDED IN META ANALYSIS

| Reference | Binns | | | | | | | | | | | | | | | | | | | | | |
|---------------------------|--|-----|-----------|---------|------|---------|--|--|--|---|---|----|---|---|----|------------------------|----|-----|-----|----|------|-----|
| Location | Wyoming, USA | | | | | | | | | | | | | | | | | | | | | |
| Subject | Oncorhynchus, Salmo, & Salvelinus trout genera | | | | | | | | | | | | | | | | | | | | | |
| Intervention | revetments, check dams, deflectors, rock weirs, boulders, wooden bank cover, trash-catcher, livestock exclusion, LWD, rock funnels, pool excavation, flow modification | | | | | | | | | | | | | | | | | | | | | |
| Methodology | Site comparisons were combined from 35 reaches where one or more interventions had occurred to assess the overall impact of in-stream improvement in Wyoming. | | | | | | | | | | | | | | | | | | | | | |
| Sources of bias | This is effectively a multi-site comparison so variation between sites could impact the results. Additional bias stems from generation of mean values which were combined across studies with no weighting (e.g. inverse variance). This also means the impact of variation in in-stream improvement intervention cannot be assessed (hence no reasons for heterogeneity). | | | | | | | | | | | | | | | | | | | | | |
| Outcomes | <table border="0"> <thead> <tr> <th></th> <th colspan="3">treatment</th> <th colspan="3">control</th> </tr> <tr> <th></th> <th>n</th> <th>m</th> <th>sd</th> <th>n</th> <th>m</th> <th>sd</th> </tr> </thead> <tbody> <tr> <td>Trout numbers per mile</td> <td>35</td> <td>600</td> <td>300</td> <td>35</td> <td>1200</td> <td>400</td> </tr> </tbody> </table> | | treatment | | | control | | | | n | m | sd | n | m | sd | Trout numbers per mile | 35 | 600 | 300 | 35 | 1200 | 400 |
| | treatment | | | control | | | | | | | | | | | | | | | | | | |
| | n | m | sd | n | m | sd | | | | | | | | | | | | | | | | |
| Trout numbers per mile | 35 | 600 | 300 | 35 | 1200 | 400 | | | | | | | | | | | | | | | | |
| Reasons for heterogeneity | time (no information on age of in-stream devices), mean flow (unknown), stream gradient (6), proportion of cobbles in substrate (dominant cf 75%), degree of existing modification (unknown assumed low?), distance from source (3km), water quality (unknown), size of stream (3.5), canopy cover (hard wood forest assumed high cf 20%). | | | | | | | | | | | | | | | | | | | | | |
| Pop/pref | population due to catchment wide scale | | | | | | | | | | | | | | | | | | | | | |
| Extraction | data were abstracted from Figure 1 with associated reading error. | | | | | | | | | | | | | | | | | | | | | |
| Notes | The author was contacted and asked to provide the raw data which would provide 35 data points rather than a single (albeit heavily weighted) effect size | | | | | | | | | | | | | | | | | | | | | |
| Reference | Binns & Remmick | | | | | | | | | | | | | | | | | | | | | |
| Location | Huff Creek, Idaho, USA | | | | | | | | | | | | | | | | | | | | | |
| Subject | Oncorhynchus clarki utah (Bonneville cutthroat trout) | | | | | | | | | | | | | | | | | | | | | |
| Intervention | in-stream habitat structures (36 wooden dams, 9 rock plunges, wooden double deflector, rock deflector, 14 small rock grade controls) rock riprap, fencing of banks | | | | | | | | | | | | | | | | | | | | | |

| | | | | | | |
|-----------------------------|---|-----|----|------------------|----|----|
| Methodology | Before and after monitoring | | | | | |
| Sources of bias | Confounding impacts concurrent with the habitat improvement are probably the most important sources of bias. Post improvement droughts occurred resulting in a likely under-estimate of effectiveness. | | | | | |
| Outcomes | post intervention | | | pre intervention | | |
| | n | m | sd | n | m | sd |
| Habitat quality index (HQI) | 6 | 38 | 2 | 6 | 30 | 2 |
| Trout numbers | 6 | 170 | 59 | 6 | 35 | 18 |
| Reasons for heterogeneity | Monitoring time 11 years. Discharge is extremely variable with a mean of 6ft ³ /s, stream gradient (1%), proportion of cobbles in substrate (common in half of river, estimated at 25%), degree of existing modification (heavy grazing but river unmodified- low), distance from source (6km), water quality (no information), size of stream (small stream >5m), canopy cover (low >5%). | | | | | |
| Pop/pref | population | | | | | |
| Extraction | habitat quality pre and post treatment, from text and figure 6. trout numbers from text and table 2. n is the number of sites. Maximum time range was used for post treatment assessment (11 years). Some data is presented for individual sites which allows some separation of features. This was not extracted i) to maintain independence, ii) because no pre treatment assessments are available at a site level | | | | | |
| Notes | HQI was evaluated for cutthroat trout. population sizes were estimated using electrofishing (Armour et al. 1983) with degree of population fluctuation assessed as in Platts and Nelson (1988). Much other data regarding both physical habitat and trout was presented but not extracted. | | | | | |
| References | Armour, C.L., Burnham, K.P., and Platts, W.S. (1983) Field methods and statistical analysis for monitoring small salmonid streams. U.S. Fish and Wildlife Service FWS/OBS 83/33. | | | | | |
| | Platts, W.S. and Nelson, R.L. (1988) Fluctuations in Trout populations and their implications for land-use evaluation. North American Journal of Fisheries Management 8. 333-345. | | | | | |
| Reference | Bjornn <i>et al.</i> | | | | | |
| Location | Staney/Shaaheen Creeks, Prince of Wales Island, Alaska | | | | | |
| Subject | Oncorhynchus kisutch (Coho salmon) | | | | | |
| Intervention | addition of riparian cover, woody debris cover, undercut bank cover and large boulder cover | | | | | |
| Methodology | BACI Design with four treatments | | | | | |
| Sources of bias | BACI design minimizes bias but only one control is used for four comparisons. However use of genuine replication rather than pseudoreplicated points minimizes bias by reducing the number of comparisons sixfold. | | | | | |
| Outcomes | Treatment | | | Control | | |
| | n | m | sd | n | m | sd |

| | | | | | | |
|---|--|--------|---------|---|-------|------|
| riparian cover- change in number of salmon | 6 | 0.8 | 11.5 | 6 | -1.2 | 4.5 |
| LWD- change in number of salmon | 6 | -7.6 | 12.2 | 6 | -1.2 | 4.5 |
| undercut bank cover- change in number of salmon | 6 | -4.3 | 16.1 | 6 | -1.2 | 4.5 |
| large boulder cover- change in number of salmon | 6 | 2.1 | 11 | 6 | -1.2 | 4.5 |
| Reasons for heterogeneity | time (11 days), mean flow (0.03m ³ /s), stream gradient (unknown), proportion of cobbles in substrate (unknown), degree of existing modification (previously logged-high), distance from source (unknown), water quality (unknown), size of stream (3m), canopy cover (alder cover but unquantified-medium). | | | | | |
| Population/Preference | Assessment of fish number was made only 11 days after cover addition therefore the study is concerned with habitat preference | | | | | |
| Extraction | Data was extracted from Table 3. Theoretically pseudoreplicated data could have been used to provide six effect sizes for each treatment rather than one (although only means were presented) but genuine replication was used as i) this downweights the number of points extracted from this study minimizing potential bias derived by comparing four treatments to one control and ii) SDs for change over time were calculable. | | | | | |
| Notes | Other data is presented regarding the response of fish to removal of cover and the recolonization rate when fish were removed. The change over time SDs are much smaller than pooled SDs substituted in other studies when they are incalculable resulting in downweighting of studies where all data is not presented | | | | | |
| Reference | Brusven <i>et al.</i> | | | | | |
| Location | South Fork Salmon River, Idaho, U.S.A | | | | | |
| Subject | Oncorhynchus tshawytscha (Chinook Salmon) | | | | | |
| Intervention | artificial cover simulating undercut bank | | | | | |
| Methodology | randomized block design (but data presented is essentially a site comparison) | | | | | |
| Sources of bias | Fish distribution is not reported prior to the experiment therefore it is not clear if treatment and control sites were similar prior to treatment | | | | | |
| Outcomes | Treatment | | Control | | | |
| | n | m | sd | n | m | sd |
| Chinook Salmon mean number per section | 4 | 22.125 | 7.5 | 4 | 5.125 | 3.49 |
| Reasons for heterogeneity | time (48 hours), mean flow (0.05m ³ /s), stream gradient (unknown), proportion of cobbles in substrate (removed by hand-0), degree of existing modification (artificial channel-high), distance from source (unknown), water quality (unknown), size of stream (2.5m), canopy cover (riparian vegetation cut-0). | | | | | |
| Population/Preference | small scale experimentation to determine habitat preference | | | | | |
| Extraction | Data was extracted from Table 2. Data from 1980 was extracted in preference to data from 1981 as 1981 experimentation involved stocking. July and August data were averaged rather than selecting one month or the other. | | | | | |

| Reference | <i>Cederholm et al</i> | | | | | |
|--|---|---|--------------------------------|-------------|-----------------------------|--------|
| Location | North Fork Porter Creek, Washington, USA | | | | | |
| Subject | Oncorhynchus kisutch (Coho Salmon) | | | | | |
| Intervention | LWD | | | | | |
| Methodology | BACI design but only time series data presented. Two methods for the addition of LWD were used in this study- one used an engineered approach where imported logs were anchored using a variety of methods- a second approach (the "logger's choice") used chain to tether felled trees to their stumps. | | | | | |
| Sources of bias | It is not clear if the change in population is due to the addition of LWD or some other factor (control data not presented with n). The post treatment data is entered twice resulting in problems of independence. LWD naturally entered reference stretch as a result of storms etc during the experimental period, fish were stocked in pre-treatment years. SDs were extracted temporally (sensitivity analysis). | | | | | |
| Outcomes | | | Treatment or Post-Intervention | | Control or Pre-Intervention | |
| | | n | m | sd | n | m |
| ENGINEERED - Change over time treatment and control | | 3 | 252.6466667 | 31.36426417 | 3 | -10.58 |
| LOGGER'S CHOICE - Change over time treatment and control | | 3 | 85.32 | 20.0756237 | 3 | -10.58 |
| Reasons for heterogeneity | time (3 years pre- and post treatment), mean flow (discharge (av annual) 1m ³ /s, low summer flow of 0.05m ³ /s), stream gradient (2%), proportion of cobbles in substrate (), degree of existing modification (), distance from source (), water quality (), size of stream (width 10m av), canopy cover (post logging regrowth). | | | | | |
| Population/Preference | population assessed using electrofishing | | | | | |
| Extraction | Data extracted from Figure 6- each year pre-treatment and each post is treated as a replicate as no SD presented- can not extract from fig 5 etc as sample size not known. | | | | | |
| Notes | Additional BACI data broken down into fish species not extractable as n is unreported. | | | | | |
| Reference | <i>Culp et al</i> | | | | | |
| Location | Jumping Pound Creek, Alberta, Canada | | | | | |
| Subject | Oncorhynchus mykiss (Rainbow Trout) | | | | | |
| Intervention | LWD - but FINE woody debris | | | | | |
| Methodology | BACI type design monitoring change over time in treatment and control- 40 sites selected, 20 had FWD added, 20 were controls, min 4m apart within stream reach. Surrounded instalments by minnow nets before triple-pass electrofishing. | | | | | |
| Sources of bias | Design minimizes bias. Data read from graph, SDs pooled resulting in underweighting of the study (sensitivity analysis). | | | | | |

| Outcomes | Treatment | | | Control | | | |
|--|--|-------|------|------------------|-------|-----|-----|
| | n | m | sd | n | m | sd | |
| Change in density of Rainbow Trout fry (no/m2) | 20 | 1.05 | 0.55 | 20 | 0.15 | 0.3 | |
| Reasons for heterogeneity | time (3 months), mean flow (mean discharge at confluence is 1.43m3/s), stream gradient (?), proportion of cobbles in substrate (sand, gravel and cobble-), degree of existing modification (), distance from source (?), water quality (assumed to be quite good as provides rich habitat for invertebrate microfauna and other fish species), size of stream (width 23m, depth 0.5m), canopy cover (open meadow with aspen, willow and poplar). | | | | | | |
| Population/Preference | Preference - short term, small spatial scale (within reach) and deals with fry. | | | | | | |
| Extraction | Density of fry (no/m2) extracted from Fig 4 p475. Data read from graph, and includes control and intervention data for longest time range available (I.e. day 220 and day 300 for with and without FWD). SEs also read from graph and SDs calculated from this. Calibration of graph reading: 2mm = 0.1 of a fish. SDs before and after intervention were pooled | | | | | | |
| Notes | Experimental design aimed to reduce effects of sampling methods by moving upstream, and electrofishing should impact fry at both control sites and interventions equally. | | | | | | |
| Reference | De Jong <i>et al.</i> | | | | | | |
| Location | Joe Farrell's Brook, Newfoundland, Canada | | | | | | |
| Subject | Salmo salar (Atlantic Salmon), Salvelinus fontinalis (Brook trout) | | | | | | |
| Intervention | boulder clusters, V-dams, half-log covers v no devices | | | | | | |
| Methodology | Before and after monitoring (a reference control is mentioned in the methods but no data are presented regarding it) | | | | | | |
| Sources of bias | Confounding impacts concurrent with the habitat improvement are probably the most important sources of bias. | | | | | | |
| Outcomes | post intervention | | | pre intervention | | | |
| | n | m | sd | n | m | sd | |
| trout density boulder cluster | 4 | 0.02 | ? | 4 | 0.014 | ? | sig |
| trout density v dam | 4 | 0.05 | ? | 4 | 0.026 | ? | ns |
| trout density half-log cover | 2 | 0.04 | ? | 2 | 0.035 | ? | ns |
| salmon density boulder cluster | 4 | 0.19 | ? | 4 | 0.06 | ? | sig |
| salmon density v dam | 4 | 0.3 | ? | 4 | 0.06 | ? | sig |
| salmon density half-log cover | 2 | 0.056 | ? | 2 | 0.03 | ? | sig |
| Reasons for heterogeneity | time (24months), mean flow (0.49ms), stream gradient (0.19%), proportion of cobbles in substrate (unknown), degree of existing modification (clear cutting of forest, channelisation and removal of in-stream substrate and creation of dams result in heavily modified river), distance from source (<18.4km), water quality (unknown), size of stream (9.3), canopy cover (47.6). | | | | | | |

| Pop/pref | | | | | | | | | | | | | | | | | | | | | | |
|--|---|----|----------------|---------------|---|---------------|--|--|--|---|---|----|---|---|----|--|---|----|----|---|---|------|
| Extraction | Data were extracted from figure 2 although this necessitated extracting before and after data rather than the BACI data which the methods infer exist. Data extraction is problematic as results were read off a graph with associated transcription error. furthermore fish densities were averaged across age classes assuming equal numbers of fish in each age class. Standard deviations could not be extracted from the data presented. Habitat attributes are means across all measurements presented. Before data (1993), after data (1995). | | | | | | | | | | | | | | | | | | | | | |
| Notes | The author's general conclusion was that restoration techniques increased habitat heterogeneity and degree of complexity in channelised sections therefore reducing competition and increasing production of salmonids. | | | | | | | | | | | | | | | | | | | | | |
| Reference | Fjellheim <i>et al.</i> | | | | | | | | | | | | | | | | | | | | | |
| Location | River Teigdalselva, Western Norway | | | | | | | | | | | | | | | | | | | | | |
| Subject | Salmo salar L. (Atlantic Salmon) and Salmo trutta L. (Brown Trout) | | | | | | | | | | | | | | | | | | | | | |
| Intervention | Construction of 4 weir basins and bouldering on substrate in one inlet to facilitate spawning | | | | | | | | | | | | | | | | | | | | | |
| Methodology | Before-after; site comparison mentioned but non-extractable | | | | | | | | | | | | | | | | | | | | | |
| Sources of bias | Confounding caused by stocking of both Salmo salar and S. trutta in the river from 1990-1996 | | | | | | | | | | | | | | | | | | | | | |
| Outcomes | <table border="1"> <thead> <tr> <th></th> <th colspan="3">Post Treatment</th> <th colspan="3">Pre-treatment</th> </tr> <tr> <th></th> <th>n</th> <th>m</th> <th>sd</th> <th>n</th> <th>m</th> <th>sd</th> </tr> </thead> <tbody> <tr> <td>Trout density individuals (100m²)-1</td> <td>3</td> <td>65</td> <td>21</td> <td>3</td> <td>9</td> <td>23.8</td> </tr> </tbody> </table> | | Post Treatment | | | Pre-treatment | | | | n | m | sd | n | m | sd | Trout density individuals (100m ²)-1 | 3 | 65 | 21 | 3 | 9 | 23.8 |
| | Post Treatment | | | Pre-treatment | | | | | | | | | | | | | | | | | | |
| | n | m | sd | n | m | sd | | | | | | | | | | | | | | | | |
| Trout density individuals (100m ²)-1 | 3 | 65 | 21 | 3 | 9 | 23.8 | | | | | | | | | | | | | | | | |
| Reasons for heterogeneity | time (1991-1997), mean flow (100+ to less than 0.2m ³ s ⁻¹), stream gradient (?), proportion of cobbles in substrate (in experimental weir basin went from low (very fine substrate) to higher (greater proportion of boulder clusters)), degree of existing modification (weir pools created), distance from source (unknown), water quality (was acidic, containing labile aluminium and ANC quantities, later shells and added to increase pH.), size of stream (wide), canopy cover (surrounded by farmland and mixed forest, cover not apparent). | | | | | | | | | | | | | | | | | | | | | |
| Extraction | Before and after data extracted from Fig.6 (p.21), showing Brown Trout densities at area of experimental substrate manipulation, pre-treatment sd estimated using reverse t-test, assuming variables for both are the same. | | | | | | | | | | | | | | | | | | | | | |
| Notes | Paper suggests habitat improvement more effective than stocking on fish numbers, but confounded as both occurred during the test reaches- also does not present weir information in an extractable way. | | | | | | | | | | | | | | | | | | | | | |
| Reference | Flebbe | | | | | | | | | | | | | | | | | | | | | |
| Location | Wine spring Creek, North Carolina, U.S.A | | | | | | | | | | | | | | | | | | | | | |
| Subject | Oncorhynchus mykiss (Rainbow trout) | | | | | | | | | | | | | | | | | | | | | |
| Intervention | 23 LWD engineered structures and naturally occurring LWD compared to no woody debris | | | | | | | | | | | | | | | | | | | | | |

| | | | | | | |
|---|---|--------------|-------------|----------------------------------|--------------|-------------|
| Methodology | Site comparison | | | | | |
| Sources of bias | The primary source of bias associated with this site comparison is potential confounding e.g. the Lower Creek is dominated by boulders rather than cobbles and has a higher gradient. Lack of independence of treatment and control may also bias results. Data extraction makes assumptions regarding sample size and variance. | | | | | |
| Outcomes | Upper Wine Spring Creek (LWD + structures) | | | Lower Wine Spring Creek (no LWD) | | |
| | n | m | sd | n | m | sd |
| Trout numbers per sampling unit | 42 | 1.85 | 3.73 | 42 | 3.47 | 3.73 |
| Reasons for heterogeneity | time (~20 years), mean flow (unknown), stream gradient (6), proportion of cobbles in substrate (dominant cf 75%?), degree of existing modification (unknown assumed low?), distance from source (3km), water quality (unknown), size of stream (3.5), canopy cover (hard wood forest assumed high cf 20%?). | | | | | |
| Pop/pref | habitat preference (assessed by counts using snorkelling fish surveyors) | | | | | |
| Extraction | The data presented in this paper is mostly concerned with occupancy. Table 3 provides estimates of trout numbers at different parts of the catchment. Lower Wine Spring Creek was selected as a control because it contains no woody debris and Upper Wine Spring Creek was originally selected as a treatment because it contains 23 wooden engineered structures with an additional 87 pieces of LWD/km. Following communication with the author, Lower and Mid Wine Spring Creek were used, and standard errors were provided. | | | | | |
| Reference | Gargan <i>et al</i> | | | | | |
| Location | Lough Corrib Catchment, W Ireland. | | | | | |
| Subject | Salmo trutta (Brown Trout) Salmo salar (Atlantic salmon) | | | | | |
| Intervention | revetments, weirs, rubble mats, lateral scour pools. | | | | | |
| Methodology | BACI design | | | | | |
| Sources of bias | BACI design minimizes bias | | | | | |
| Outcomes | Treatment | | | Control | | |
| | n | m | sd | n | m | sd |
| change in older brown trout minimum density | 3 | -0.001133333 | 0.021016739 | 3 | -0.000566667 | 0.006867557 |
| change in salmon parr minimum density | 7 | 0.050757143 | 0.064161589 | 7 | -0.032728571 | 0.079023851 |
| Reasons for heterogeneity | time (unknown), mean flow (unknown), stream gradient (unknown), proportion of cobbles in substrate (unknown), degree of existing modification (unknown), distance from source (unknown), water quality (unknown), size of stream (unknown), canopy cover (unknown). | | | | | |
| Population/Preference | although timescale is unknown fish populations were estimated over a number of years using electrofishing | | | | | |
| Extraction | Data was extracted from appendices 2 and 3. Mean change over time was extracted before and after intervention in treatment and control | | | | | |

sites. Where there were multiple measures for one site the average was taken. SDs were calculated based on change before and after treatment with n represented by the number of paired data points. Data was extracted from Salmon parr and old trout (older fish) preferentially over fry and young fish to maintain independence.

| Reference | Giannico | | | | | | | | | | | | | | | | | | | | | |
|---|---|------|-----------|---------|-----|---------|--|--|--|---|---|----|---|---|----|---|----|------|-----|----|-----|-----|
| Location | Spring Creek, British Columbia, Canada | | | | | | | | | | | | | | | | | | | | | |
| Subject | Oncorhynchus kisutch (juvenile coho salmon) | | | | | | | | | | | | | | | | | | | | | |
| Intervention | woody debris consisting of bundles of tree branches (FWD) | | | | | | | | | | | | | | | | | | | | | |
| Methodology | site comparison between experimental treatments in two stretches of the creek | | | | | | | | | | | | | | | | | | | | | |
| Sources of bias | Variation in site conditions could impact the result of the experiment (replication is temporal) | | | | | | | | | | | | | | | | | | | | | |
| Outcomes | <table border="1"> <thead> <tr> <th></th> <th colspan="3">treatment</th> <th colspan="3">control</th> </tr> <tr> <th></th> <th>n</th> <th>m</th> <th>sd</th> <th>n</th> <th>m</th> <th>sd</th> </tr> </thead> <tbody> <tr> <td>proportional distribution of salmon fry</td> <td>11</td> <td>0.12</td> <td>0.5</td> <td>11</td> <td>0.2</td> <td>0.5</td> </tr> </tbody> </table> | | treatment | | | control | | | | n | m | sd | n | m | sd | proportional distribution of salmon fry | 11 | 0.12 | 0.5 | 11 | 0.2 | 0.5 |
| | treatment | | | control | | | | | | | | | | | | | | | | | | |
| | n | m | sd | n | m | sd | | | | | | | | | | | | | | | | |
| proportional distribution of salmon fry | 11 | 0.12 | 0.5 | 11 | 0.2 | 0.5 | | | | | | | | | | | | | | | | |
| Reasons for heterogeneity | time (1 month), mean flow (0.04m ³ s), stream gradient (?), proportion of cobbles in substrate (moderate cf 20%), degree of existing modification (golf course above experiment and in-stream structures -high), distance from source (unknown), water quality (unknown), size of stream (2), canopy cover (moderate in lower half of stream cf 10%). | | | | | | | | | | | | | | | | | | | | | |
| Pop/pref | habitat preference measured by introducing experimental fish into the experimental set up 11 times | | | | | | | | | | | | | | | | | | | | | |
| Extraction | Data was extracted from figure 5 (with associated reading error). The legend is erroneous therefore it is assumed that open bars represent an additional feeding experiment (as in the other figures). Data was only extracted for no cover-no food and dense fwd-no food treatments. This experiment was preferentially extracted to experiment 1 as food addition was not a split-plot treatment (both could not be extracted whilst maintaining independence). | | | | | | | | | | | | | | | | | | | | | |
| notes | This paper demonstrates that food is important in determining habitat preference and as food supply varies seasonally, fish prefer pools with woody debris in summer but not in spring | | | | | | | | | | | | | | | | | | | | | |
| Reference | Giannico & Hinch | | | | | | | | | | | | | | | | | | | | | |
| Location | Squamish river, British Columbia, Canada | | | | | | | | | | | | | | | | | | | | | |
| Subject | Oncorhynchus kisutch (juvenile coho salmon) | | | | | | | | | | | | | | | | | | | | | |
| Intervention | LWD debris bundles | | | | | | | | | | | | | | | | | | | | | |
| Methodology | 2 independent experimental stretches with treatment and control | | | | | | | | | | | | | | | | | | | | | |
| Sources of bias | Experimental design minimizes potential for bias but the extraction of data across seasons (and estimation of subsequent sd) may introduce bias and results in potential underweighting (sensitivity analysis required) | | | | | | | | | | | | | | | | | | | | | |

| Outcomes | treatment | | | control | | |
|--|--|-------|-------------|---------|--------|-------------|
| | n | m | sd | n | m | sd |
| coho salmon density upper paradise low density (96/7) | 4 | 2.375 | 1.670079838 | 4 | 2.475 | 1.819111505 |
| coho salmon density upper paradise high density (97/8) | 4 | 3.625 | 1.367174702 | 4 | 2.225 | 1.869714773 |
| coho salmon density upper mamquam low density (97/8) | 4 | 0.55 | 0.264575131 | 4 | 0.5875 | 0.3473111 |
| coho salmon density upper mamquam high density (96/7) | 4 | 2.52 | 1.252663828 | 4 | 1.9 | 1.669331203 |
| Reasons for heterogeneity | time (1 year), mean flow (0.09m ³ s), stream gradient (0), proportion of cobbles in substrate (low?), degree of existing modification (excavated side channels with riprap-high), distance from source (unknown), water quality (water chemistry results presented- 0.444ppm nitrate-good), size of stream (up 5.9, um 6.18), canopy cover (?). | | | | | |
| Pop/pref | habitat preference | | | | | |
| Extraction | Data was extracted from figure 3 (with associated reading error). Data was averaged across seasons to prevent multiple extraction of points (maintenance of independence). However, this obscures the effectiveness of lwd at low fish densities in march and may. The standard deviations and n are also calculated across seasons resulting in potential downweighting although the sds are not dissimilar to those presented for monthly treatment effects. | | | | | |
| Notes | Subjective judgement was required to ascertain how to extract this data which presents results from two years (different fish densities each year) and seasonal variation. It was decided to extract 4 points as i) two sites were independent and ii) the experimental design meant the years were independent (2 years + 2 sites = 4 effect sizes). However, results were averaged across seasons. | | | | | |
| Reference | Gowan & Fausch | | | | | |
| Location | six streams, Colorado, U.S.A | | | | | |
| Subject | Salvelinus fontinalis (Brook trout) Salmo trutta (Brown Trout) Oncorhynchus mykiss (Rainbow Trout) | | | | | |
| Intervention | LWD 10 log drop structures (low log weirs) | | | | | |
| Methodology | BACI design with a complex (but rigorous) analysis (ANOVA used to confirm site similarity prior to treatment, MANOVA used for subsequent analysis with mean change imputed as a dependent variable) | | | | | |
| Sources of bias | Good experimental design limits bias but replication methods are unclear hence there is uncertainty regarding sample size (sensitivity analysis). Data extraction results in further bias as standard deviations (imputed from Confidence intervals) consist of pooled before and after values- probably resulting in underweighting and necessitating sensitivity analysis. | | | | | |
| Outcomes | treatment | | | control | | |
| | n | m | sd | n | m | sd |
| abundance (no per 250m section) | | | | | | |
| Change in Brook trout abundance- Colorado Creek | 6 | 95 | 3 | 6 | -24 | 1.5 |
| Change in Brook trout abundance- Walton Creek | 6 | 165 | 1.5 | 6 | 35 | 6.7 |

| | | | | | | |
|---|---|------|-------------|---|------|-------------|
| Change in Brook trout abundance- North Fork Poudre | 6 | 105 | 6 | 6 | 30 | 1.5 |
| Change in Brook trout abundance- Jack Creek | 6 | 75 | 2 | 6 | 62 | 6.1 |
| Change in Brook trout abundance- South St Vrain Creek | 6 | 80 | 6.1 | 6 | 17 | 6.1 |
| Change in Brown trout abundance- South St Vrain Creek | 6 | 52 | 3 | 6 | 8 | 3 |
| Change in Rainbow trout abundance- South St Vrain Creek | 6 | -5 | 18 | 6 | 20 | 3 |
| Change in Brown trout abundance- Little Beaver Creek | 6 | 50 | 3 | 6 | 2 | 9 |
| Reasons for heterogeneity | time (6 years), mean flow (0.1m ³ s), stream gradient (1.9), proportion of cobbles in substrate (unknown), degree of existing modification (unknown), distance from source (unknown), water quality (unknown), size of stream (4.4), canopy cover (unknown). | | | | | |
| Pop/pref | population assessed using three pass electrofishing and implant tags with ML population estimates (White et al. 1982) | | | | | |
| Extraction | Adult trout abundance was extracted from figures 2,3 & 4 (with associated reading error) n=6 as there are six possible annual comparisons but the sample sizes used in the different analyses are not specified by the author. CIs were converted to Sds and pooled (CIs were assumed equal where one was missing). The down stream control was used for St Vrain Creek. | | | | | |
| References | White, G.C., Anderson, D.R., Burnham, K.P. & Otis, D.L. (1982) Capture-recapture and removal methods for sampling closed populations. Los Alamos national Laboratory LA-8787-NERP, Los Alamos, New Mexico, U.S.A. | | | | | |
| Reference | Harzler | | | | | |
| Location | McMichaels Creek, Pennsylvania, USA | | | | | |
| Subject | Salmo trutta (Brown Trout) | | | | | |
| Intervention | 68 half log covers providing 40m ² of supplemental shelter to 700m of the Creek | | | | | |
| Methodology | BACI | | | | | |
| Sources of bias | Lacking data from before in the control sections therefore study is effectively a site comparison and stocking is a confounding factor. (Sensitivity analysis required) | | | | | |
| Outcomes | Treatment | | Control | | | |
| | n | m | sd | n | m | sd |
| Change in mean number of Brown Trout over time | 5 | 1.48 | 4.551593128 | 5 | -2.9 | 6.829348432 |
| Reasons for heterogeneity | time (3 years; 2 before, 3 after), mean flow (0.5m ³ /s during low flows in midsummer), stream gradient (7m/km), proportion of cobbles in substrate (rubble and gravel), degree of existing modification (medium- rock and log dams to create pools already constructed), distance from source (unclear but not far?), water quality (low alkalinity and low pH.), size of stream (7m width average), canopy cover (medium?- second growth deciduous forest shades most of length except for several open meadow sections.). | | | | | |
| Population/Preference | Population | | | | | |

| | | | | | | |
|---|--|------|---------|---|------|------|
| Extraction | Pre-and post- data for control and intervention means and standard deviations collected as change over time from table 2, p231, n=5 as presented in table 2. | | | | | |
| Notes | Other data presented for different age class fish in Tables 3 & 4. Angler harvests increased in the sections containing the half-log covers and decreased in those without (preference?) but were not statistically significant and had increased pre-treatment too. Mean no of harvested brown trout for 5 sites | | | | | |
| Reference | House | | | | | |
| Location | East Fork Lobster Creek, Oregon, USA | | | | | |
| Subject | Oncorhynchus mykiss (Steelhead), Oncorhynchus clarki clarki (Cutthroat Trout), Oncorhynchus kisutch (juvenile Coho Salmon) | | | | | |
| Intervention | 15 full span gabions, 7 full span boulder structures, 10 partial span boulder groups and deflectors | | | | | |
| Methodology | BACI design | | | | | |
| Sources of bias | Experimental design minimizes bias but imputation of sds may lead to errors (coho and steelhead are likely to be underweighted while cutthroats may be overweighted- although not significant- sensitivity analysis). | | | | | |
| Outcomes | treatment | | control | | | |
| | n | m | sd | n | m | sd |
| Change in juvenile coho salmon total number | 5 | 1235 | 223 | 5 | 198 | 122 |
| Change in steelhead total number | 5 | 46 | 33 | 5 | 20 | 26 |
| Change in cutthroat trout m2 | 5 | 0 | 0.02 | 5 | 0.03 | 0.02 |
| Reasons for heterogeneity | time (8 years), mean flow (0.04ms), stream gradient (3), proportion of cobbles in substrate (dominant cf 75%?), degree of existing modification (logged-medium), distance from source (not known but 5th order stream), water quality (unknown), size of stream (8), canopy cover (bank side alnus therefore assumed high cf 20%?). | | | | | |
| Pop/pref | populations estimated using electrofishing over 8 year timescale | | | | | |
| Extraction | Data was extracted from table 4. changes in time for treatment and control were extracted. Sds could not be calculated for rate of change but were pooled for preand post treatment as an estimate. Sds were imputed for cutthroat trout based on the fact that there was no significant difference (t test); p was therefore assumed to be 0.051 for calculation of t and hence sd. | | | | | |
| Reference | Horan et al | | | | | |
| Location | Colorado River, Uinta Mountains, Utah/Wyoming, USA | | | | | |
| Subject | Colorado River Cutthroat Trout <i>Oncorhynchus clarki pleuriticus</i> | | | | | |
| Intervention | Habitat complexity- large woody debris | | | | | |
| Methodology | Site comparisons | | | | | |

| | | | | | | | |
|--|--|------|---------|--------|--------|------|--|
| Sources of bias | Data extraction, averaged LWD numbers. | | | | | | |
| Outcomes | Treatment | | Control | | | | |
| | n | m | se | n | m | se | |
| CRCT/100m2 | 10 | 13.9 | 11.69 | 30 | 7.5 | 5.47 | |
| Pop/pref | Preference | | | | | | |
| Extraction | WILL and BFBF were selected as highest and lowest levels of LWD densities. Fish numbers for adults and juveniles were combined to reflect population trends- data in fish/100m2 was extracted from table 3 p1255 for both sites, n and SEs were presented. Sds calculated from SEs. | | | | | | |
| Reference | Hunt | | | | | | |
| Location | Lawrence Creek | | | | | | |
| Subject | Salvelinus fontinalis (Brook trout) | | | | | | |
| Intervention | Bank cover and cover deflection devices | | | | | | |
| Methodology | Before and After monitoring | | | | | | |
| Sources of bias | There are no control sections in this work (although controls do exist for some of the sections that are treated as replicates in this analysis). Change concurrent with the intervention is therefore the major source of bias. | | | | | | |
| Outcomes | after | | | before | | | |
| | n | m | sd | n | m | sd | |
| annual production of brook trout gm2yr | 4 | 12.9 | 5.5 | 4 | 12.625 | 1.7 | |
| Reasons for heterogeneity | time (7 years), mean flow (unknown), stream gradient (unknown), proportion of cobbles in substrate (unknown), degree of existing modification (unknown), distance from source (unknown), water quality (unknown), size of stream (9.7), canopy cover (unknown). | | | | | | |
| Population/Preference | population assessed over 10 years using rigorous electrofishing methodology | | | | | | |
| Extraction | Data was extracted from table 2. Mean production before intervention was extracted from 1960 with SD derived from the four sections. Post intervention data was extracted from 1970 to maximise time range. | | | | | | |
| Notes | Data is available from four different publications regarding this site necessitating value judgment about which should be extracted. We decided to extract one point from the study (to maintain independence) over maximum timescale at the biggest spatial scale. The data is therefore robust but arguably underweighted in the analysis. | | | | | | |
| Reference | Hvidsten & Johnsen | | | | | | |
| Location | River Sjøya, Norway | | | | | | |

| | | | | | | |
|---------------------------|--|-------------|-------------|---------------------------|------|-------------|
| Subject | Salmo salar (Atlantic salmon) and Salmo trutta (Brown Trout) | | | | | |
| Intervention | Weirs, revetments and bouldering using blasted stones | | | | | |
| Methodology | Site comparison comparing control/intervention | | | | | |
| Sources of bias | Effects confounded as drainage & channelisation of the stream occurred at the same time as bouldering. | | | | | |
| Outcomes | T | | | C | | |
| | n | m | sd | n | m | sd |
| Atlantic salmon 100m2 | 2 | 35 | 14.5 | 3 | 5 | 2 |
| Brown Trout 100m2 | 2 | 29 | 6.5 | 3 | 34 | 5.7 |
| Reasons for heterogeneity | time (1984-1990), mean flow (varies considerably), stream gradient (?), proportion of cobbles in substrate (5-10cm stones to fine substrate), degree of existing modification (none mentioned from before the draining, channelisation and weir/boulder installations), distance from source (?), water quality (?), size of stream (20m width in channelised areas), canopy cover (unknown, estimated low). | | | | | |
| Population/Preference | population estimates | | | | | |
| Extraction | Data taken from Figure 3 and Figure 5, widest time range for average of reference points 6,7 and 8 (upstream controls changed) and data for stream subsection with greatest alteration i.e. riprap across stream bottom and banks- 4b and 5a. | | | | | |
| Reference | Inoue & Nakano | | | | | |
| Location | Teshio River, N Hokkaido, Japan | | | | | |
| Subject | Oncorhynchus masou (Masu salmon) | | | | | |
| Intervention | LWD, FWD | | | | | |
| Methodology | Correlative study linking habitat features (including woody debris abundance) to salmon population in 48 study reaches | | | | | |
| Sources of bias | There is no information regarding baseline conditions or change from baseline. The authors state that there is considerable variation in stream characteristics within the study. This could account for the variation in salmon numbers rather than woody debris. Data extraction uses tributaries as replicates therefore the study is underweighted. | | | | | |
| Outcomes | Treatment (natural woody debris) | | | Control (no woody debris) | | |
| | n | m | sd | n | m | sd |
| masu salmon density | 9 | 6.555555556 | 8.314311624 | 2 | 0.75 | 0.212132034 |
| Reasons for heterogeneity | Each of the replicates has such different characteristics that overall means summarising the catchment characteristics would be misleading. | | | | | |
| Population/Preference | population estimates derived at the reach scale using electrofishing methodology | | | | | |
| Extraction | Data was extracted from table 1 using the 11 tributaries with salmonid data as replicates. The two containing no woody debris were used as control sites with the remainder being treatment sites from which means and standard deviations were calculated. Other data is presented | | | | | |

| | | | | | | |
|---|--|------|-----|------------------|------|-----|
| Notes | <p>comparing microhabitat preference but we only extracted the population measure to retain independence. The authors use partial correlation analysis to examine the relative impact of LWD and hydraulic variables and found no relationship between salmonid density and LWD at the reach scale but habitat use by salmon in pools or riffles (non-pools) was affected by woody debris rather than hydraulic variables at the micro-habitat scale.</p> | | | | | |
| Reference | Johnson <i>et al.</i> | | | | | |
| Location | Tenmile Creek, Oregon, U.S.A. | | | | | |
| Subject | Oncorhynchus mykiss (Steelhead), Oncorhynchus clarki clarki (Cutthroat Trout), Oncorhynchus kisutch (Coho Salmon) | | | | | |
| Intervention | Large Woody Debris (this was a planned intervention but additional woody debris entered the system naturally following a winter storm). | | | | | |
| Methodology | Before and after monitoring (BACI treatment confounded) | | | | | |
| Sources of bias | Confounding impacts concurrent with the habitat improvement are probably the most important sources of bias. | | | | | |
| Outcomes | post intervention | | | pre intervention | | |
| | n | m | sd | n | m | sd |
| Oncorhynchus mykiss population | 2 | 9000 | 301 | 2 | 8000 | 301 |
| Oncorhynchus clarki clarki smolt population | 2 | 2200 | 500 | 2 | 250 | 500 |
| Oncorhynchus kisutch population | 2 | 5000 | 207 | 2 | 5150 | 207 |
| Reasons for heterogeneity | time (60 months), mean flow (unknown), stream gradient (3), proportion of cobbles in substrate (unknown), degree of existing modification (low?), distance from source (4km), water quality (unknown), size of stream (15.6), canopy cover (coniferous catchments therefore moderate cover). | | | | | |
| Pop/pref | population estimates derived for reaches using electrofishing | | | | | |
| Extraction | Steel head, Coho and cutthroat smolt population was extracted (figs 5, 6, 7). Data were extracted from the maximum time range 1991-2000 but the time range is considered as 5 years (5 years post intervention). Sds were calculated working back from the p values reported from T tests (note that our mean difference is calculated from the maximum time range not the mean of before and after, which may introduce a small error). n was downweighted to 2 because three non-independent points were extracted | | | | | |
| Notes | The authors interpret the BACI data as confounded because the trends in the reference stream do not match those in the treatment- thus site differences are operating. Data has therefore been extracted as time-series data from before and after impact in the treatment. | | | | | |
| Reference | Jones <i>et al</i> | | | | | |
| Location | Barrenlands, Northwest Territories, Canada | | | | | |
| Subject | Thymallus arcticus (Arctic grayling) | | | | | |
| Intervention | ramps, v-weirs, vanes and groins in an artificial stream | | | | | |

| | | | | | | | |
|---------------------------|--|------|-------|---------|-----|-------|---|
| Methodology | BACI | | | | | | |
| Sources of bias | extracted pooled standard deviation. Artificially created stream, different fish, weather conditions (sensitivity analysis) | | | | | | |
| Outcomes | Treatment | | | Control | | | 0 |
| | n | m | sd | n | m | sd | |
| Fish number per m-3 | 14 | -0.6 | 2.75 | 10 | 8.3 | 4.25 | |
| Reasons for heterogeneity | time (1998-2000-1), mean flow (?), stream gradient (?), proportion of cobbles in substrate (fine sediments equal 44% so cobbles estimated as low), degree of existing modification (entirely unnatural), distance from source (within a lake chain, estimate medium), water quality (?), size of stream (?), canopy cover (unvegetated, estimated low). | | | | | | |
| Population/Preference | habitat preference | | | | | | |
| Extraction | p1361- data read from Figure 6a. Standard deviations were pooled, this creates an additional source of bias but should lead to an underestimation. | | | | | | |
| Notes | Although numbers decreased overall, fish showed a preference at a mesohabitat scale for the structures. LWD not naturally occurring in this tundra environment so not used. Climate conditions appear to reflect overall changes in fish numbers | | | | | | |
| Reference | Knaepkens <i>et al.</i> | | | | | | |
| Location | Witte Nete, Flanders, Belgium | | | | | | |
| Subject | Cottus gobio (European bullhead) | | | | | | |
| Intervention | artificial stones v no stones | | | | | | |
| Methodology | Site comparisons from sampling by electrofishing at 40 random locations 7 of which contain stones | | | | | | |
| Sources of bias | The primary source of bias associated with this multi-site comparison is potential confounding. The sites with stones are near bridges with offer cover and water velocities are also higher. Lack of independence of treatments could also impact the results | | | | | | |
| Outcomes | treatment | | | control | | | |
| | n | m | sd | n | m | sd | |
| bullhead numbers | 7 | 6.7 | 6.849 | 33 | 0.2 | 0.442 | |
| Reasons for heterogeneity | time (unknown), mean flow (0.16ms), stream gradient (lowland river with low gradient extracted as 0.1%), proportion of cobbles in substrate (30% on average in the treatment), degree of existing modification (channelised heavily modified lowland river-high), distance from source (unknown), water quality (unknown), size of stream (unknown), canopy cover (unknown). | | | | | | |
| Pop/pref | habitat preference | | | | | | |
| Extraction | Data was extracted from table 1. mean values were used across all sites for habitat variables except proportion of cobbles which was restricted to the treatment sites. | | | | | | |

| Reference | Knudsen & Dilley | | | | | |
|--|---|-------|-------------|---------|------|-------------|
| Location | Five sites, Western Washington, U.S.A | | | | | |
| Subject | Oncorhynchus kisutch (Coho salmon), Oncorhynchus mykiss (Steelhead), Oncorhynchus clarki (Cutthroat trout) | | | | | |
| Intervention | Streambank relocation, riprap and streambed alteration | | | | | |
| Methodology | BACI design | | | | | |
| Sources of bias | BACI design minimizes bias but extraction involved pooling CIs and converting them to SDs (assuming normal distribution and n of 100!) potentially underweighting the study (sensitivity analysis). Population parameters were estimated when n>7 thus n is assumed conservatively to be 7. | | | | | |
| Outcomes | Treatment | | | Control | | |
| | n | m | sd | n | m | sd |
| change in coho numbers- Decker | 7 | 158 | 145.744898 | 7 | 10 | 47.23214286 |
| change in coho numbers- big Mission | 7 | -1167 | 410.9196429 | 7 | -445 | 290.1403061 |
| change in coho numbers- Beaver | 7 | -8 | 14.84438776 | 7 | 11 | 2.698979592 |
| change in coho numbers- Lower Deschutes | 7 | 0.1 | 0.06747449 | 7 | -35 | 43.18367347 |
| change in coho numbers- Upper Deschutes | 7 | -246 | 107.2844388 | 7 | 87 | 105.934949 |
| change in steelhead numbers- Decker | 7 | 417 | 142.3711735 | 7 | 84 | 50.60586735 |
| change in steelhead numbers- Big Mission | 7 | -29 | 31.7130102 | 7 | 28 | 12.14540816 |
| change in steelhead numbers- Beaver | 7 | 8 | 0.674744898 | 7 | 12 | 2.698979592 |
| change in steelhead numbers- Lower Deschutes | 7 | 449 | 184.880102 | 7 | 48 | 128.2015306 |
| change in steelhead numbers- Upper Deschutes | 7 | -67 | 52.63010204 | 7 | 52 | 43.18367347 |
| change in cutthroat trout numbers- Decker | 7 | 16 | 10.79591837 | 7 | 3 | 4.723214286 |
| change in cutthroat trout numbers- Big Mission | 7 | 7 | 11.47066327 | 7 | -10 | 19.56760204 |
| change in cutthroat trout numbers- Beaver | 7 | -1 | 0.06747449 | 7 | 0.1 | 0.06747449 |
| change in cutthroat trout numbers- Lower Deschutes | 7 | 24 | 14.84438776 | 7 | 2 | 26.98979592 |
| change in cutthroat trout numbers- Upper Deschutes | 7 | -7 | 17.54336735 | 7 | 10 | 3.37372449 |
| Reasons for heterogeneity | time (three weeks), mean flow (0.5-11m ³ /s), stream gradient (unknown), proportion of cobbles in substrate (unknown), degree of existing modification (unknown), distance from source (unknown), water quality (unknown), size of stream (unknown), canopy cover (forested catchment but unquantified). | | | | | |
| Population/Preference | Although the authors used population estimation techniques the timescale is so short (maximum three weeks) that habitat preference rather than change in population is being studied. | | | | | |
| Extraction | Data was extracted from Table 2. Individual fish species were extracted in preference to pooled species. Change over time was extracted for | | | | | |

treatment and control sites, n was assumed to be 7 (see methods), CIs were pooled and converted to SD assuming a large sample size and normal distribution by dividing the length of the confidence interval by 3.92, and then multiplying by the square root of the sample size. Where the mean or CI was zero it was substituted with 0.1 for inclusion in the analysis

| Reference | <i>Koed et al.</i> | | | | | | |
|--------------------------------------|---|-------|-------|---------|--------|-------|--|
| Location | River Skern, Denmark | | | | | | |
| Subject | Salmo salar (Atlantic Salmon) and Salmo trutta (Brown Trout) | | | | | | |
| Intervention | Dyke removal and re-meandering | | | | | | |
| Methodology | BA | | | | | | |
| Sources of bias | Large lake (250ha) developed due to bank collapse part way through experimental run leading to increased predation from bird colonies | | | | | | |
| Outcomes | After | | | Before | | | |
| | n | m | sd | n | m | sd | |
| Atlantic Salmon Survival (% indiv) | 1 | 49 | | 1 | 54 | | |
| Brown Trout Survival (% indiv) | 1 | 74 | | 1 | 81 | | |
| Reasons for heterogeneity | time (24 months), mean flow (?), stream gradient (70m fall over 94km), proportion of cobbles in substrate (), degree of existing modification (), distance from source (? but to mouth), water quality (3-24% salinity in estuarine end), size of stream (?), canopy cover (?). Discharge (mean annual 36m ³ s ⁻¹) | | | | | | |
| Population/Preference | Population? | | | | | | |
| Extraction | Survival data (%) taken from Table II, p74, before and after. No Standard Deviation is extractable. | | | | | | |
| Reference | <i>Langford et al</i> | | | | | | |
| Location | Wessex | | | | | | |
| Subject | Trout and Salmon | | | | | | |
| Intervention | Bouldering, some livestock fencing and bank alteration | | | | | | |
| Methodology | Site comparison | | | | | | |
| Sources of bias | Confounded interventions and potential error from extraction assumption of sample size (sensitivity analysis) | | | | | | |
| Outcomes | Treatment | | | Control | | | |
| | n | m | sd | n | m | sd | |
| Wild trout number 100m ⁻² | 4 | 0.25 | 0.197 | 4 | 0.0333 | 0.025 | |
| Salmon parr no 100m ⁻² | 4 | 10.26 | 11.28 | 4 | 3.333 | 2.95 | |

| | | | | | | |
|---------------------------|--|-----|---------|----|-------|--------|
| Reasons for heterogeneity | time (approx 2yrs), mean flow (?), stream gradient (?), proportion of cobbles in substrate (estimated as low although some), degree of existing modification (grazing and abstraction), distance from source (?), water quality (unknown), size of stream (?), canopy cover (estimated as low/medium). | | | | | |
| Population/Preference | population (assumed given spatial scale and time) | | | | | |
| Extraction | Data extracted from Fig 30 pXVII for wild trout and for salmon parr, read from graphs. N is given as 4 and this is assumed for both control and intervention. Calibration= (Wild trout: 9mm=0.1 fish/100-2 and Salmon parr: 1.95mm= 1 fish) | | | | | |
| Notes | Other fish data included but not extracted, as well as for age class (0 and 1 trout) | | | | | |
| Reference | Lehane <i>et al</i> | | | | | |
| Location | Douglas River, Cork, Ireland | | | | | |
| Subject | Salmo trutta (Brown trout) | | | | | |
| Intervention | large woody debris | | | | | |
| Methodology | BACI type RCT design with pre and post treatment and control fish abundance estimated using electrofishing. | | | | | |
| Sources of bias | The experimental design minimizes bias but the short timescale limits the predictive value of results. The control also incorporates "natural" levels of LWD therefore the treatment effect is likely to be underestimated in comparison to no woody debris. mean difference based on the extracted rate of change (21.8) is higher than mean difference based on treatment-control post intervention (17) or pre and post treatment (7.5). | | | | | |
| Outcomes | treatment | | control | | | |
| | n | m | sd | n | m | sd |
| Trout numbers | 4 | 7.5 | 8.426 | 12 | -14.3 | 14.342 |
| Reasons for heterogeneity | time (21 months), mean flow (0.45ms), stream gradient (3%), proportion of cobbles in substrate (unknown), degree of existing modification (riparian plantation-medium), distance from source (<5Km), water quality (unknown), size of stream (4.7), canopy cover (surrounding plantation infers high cover, estimated at 20%). | | | | | |
| Pop/pref | habitat preference- small scale measure of trout distribution | | | | | |
| Extraction | Changes in total trout captures over time in treatment and control were extracted from table 1. pre installation figures March 1998, installation is June 1998, post installation was extracted from spring 2000. the 4 segments with dams were treated as four treatment replicates and the 12 segments without dams were treated as controls. The reaches were not deemed independent which is why they were combined to derive a single effect size for analysis. | | | | | |
| Notes | Other data presenting both fish and habitat metrics was presented including ANOVAs, recapture data and a PCA. Mark recapture data suggested that the trout moved but they moved less when woody debris was present. The authors concluded that appropriate riparian management would provide an input of LWD. In the absence of this input, artificial intervention provides short to medium term stream | | | | | |

enhancement for trout.

| Reference | Linløkken | | | | | | | | | | | | | | | | | | | | | |
|-------------------------------|--|----|-----------|---------|---|---------|--|--|--|---|---|----|---|---|----|-------------------------------|-----|----|-------|-----|---|-------|
| Location | River Glomma, SE Norway | | | | | | | | | | | | | | | | | | | | | |
| Subject | Salmo trutta(Brown Trout) | | | | | | | | | | | | | | | | | | | | | |
| Intervention | Four rock weirs and deflectors | | | | | | | | | | | | | | | | | | | | | |
| Methodology | BACI type design | | | | | | | | | | | | | | | | | | | | | |
| Sources of bias | Although the BACI design minimizes bias, it is unclear how the work was replicated. Data extraction involved pooling CIs and converting them to SDs probably resulting in underweighting. This may have been counteracted by the use of fish numbers from figure 4 to derive sample sizes. A drought also resulted in low flow at the end of the experiment potentially confounding the results, thus there is considerable potential for bias in spite of the BACI design. (sensitivity analysis) | | | | | | | | | | | | | | | | | | | | | |
| Outcomes | <table border="1"> <thead> <tr> <th></th> <th colspan="3">Treatment</th> <th colspan="3">Control</th> </tr> <tr> <th></th> <th>n</th> <th>m</th> <th>sd</th> <th>n</th> <th>m</th> <th>sd</th> </tr> </thead> <tbody> <tr> <td>Change in brown trout density</td> <td>170</td> <td>-5</td> <td>255.3</td> <td>287</td> <td>1</td> <td>215.5</td> </tr> </tbody> </table> | | Treatment | | | Control | | | | n | m | sd | n | m | sd | Change in brown trout density | 170 | -5 | 255.3 | 287 | 1 | 215.5 |
| | Treatment | | | Control | | | | | | | | | | | | | | | | | | |
| | n | m | sd | n | m | sd | | | | | | | | | | | | | | | | |
| Change in brown trout density | 170 | -5 | 255.3 | 287 | 1 | 215.5 | | | | | | | | | | | | | | | | |
| Reasons for heterogeneity | time (8 years), mean flow (0.95m ³ s ⁻¹), stream gradient (1.75%), proportion of cobbles in substrate (high but not quantified), degree of existing modification (dredged for logging-high), distance from source (<68Km), water quality (high), size of stream (unknown), canopy cover (unknown). | | | | | | | | | | | | | | | | | | | | | |
| Population/Preference | Density estimated by electrofishing and mark recapture over long timescale- population | | | | | | | | | | | | | | | | | | | | | |
| Extraction | Data was extracted from figure 2 with before data 1986 and after data 1996. CIs were pooled and converted to SD assuming a large sample size and normal distribution by dividing the length of the confidence interval by 3.92, and then multiplying by the square root of the sample size. Sample size was taken from 1986 from figure 4. Graphical reading errors will decrease accuracy. | | | | | | | | | | | | | | | | | | | | | |
| Reference | Mesick | | | | | | | | | | | | | | | | | | | | | |
| Location | Rush Creek, California, USA | | | | | | | | | | | | | | | | | | | | | |
| Subject | Salmo trutta (Brown trout) | | | | | | | | | | | | | | | | | | | | | |
| Intervention | excavation of pools with woody debris or boulders added, side channels (to reduce flow) and spawning gravel added downstream of pools | | | | | | | | | | | | | | | | | | | | | |
| Methodology | Comparisons of different river sections were made with associated estimates of fish numbers assessed by electrofishing. Population estimates were computed using the maximum likelihood method (Platts et al. 1983). Survival rates were calculated standardized over a 12 month interval. Regression models were developed relating fish population parameters to habitat. | | | | | | | | | | | | | | | | | | | | | |
| Sources of bias | The primary source of bias associated with this multi-site comparison is potential confounding. Lack of independence of treatments could also impact the results, e.g. Immigration of fish resulted in survival indices of over 100% for some sites. It is difficult to assess whether these | | | | | | | | | | | | | | | | | | | | | |

| | | | | | | | |
|----------------------------------|--|-------|-------|---------------------------|-------|-------|--|
| | biases would over or underestimate the effect size. | | | | | | |
| Outcomes | treatment post intervention | | | control post intervention | | | |
| | n | m | sd | n | m | sd | |
| survival index (1=100% survival) | 3 | 0.732 | 0.646 | 5 | 0.246 | 0.141 | |
| Reasons for heterogeneity | time (1 year for survival indices), average stream flow 1985-1992 is 61cfs, stream gradient (2.1%), proportion of cobbles in substrate (unknown), degree of existing modification (heavy grazing impacts on riparian strip, flow controls from lake higher up the catchment-high), distance from source (unknown), water quality (unknown), size of stream (8m), canopy cover (low <5%). | | | | | | |
| Pop/pref | population | | | | | | |
| Extraction | This is a complex paper presenting many results. Raw fish number data is not presented in relation to sites or treatments (although the output of a regression model is). Data has been extracted from table 7 comparing survival indices from restoration sites with pools to control sites (main channel only). Extracted data has been averaged across age classes. | | | | | | |
| Notes | The overall regression model indicates that the number of pools, boulders and channel gradient do not have a significant impact on juvenile abundance or catchable biomass but maximum depth, area of vegetation and streambed complexity effect one or other outcome measure. High winter flows appear to be limiting the effectiveness of the habitat modification. | | | | | | |
| References | Platts, W.S., Megahan, W.F. and Minshall, G.W. (1983) Methods for evaluating streams, riparian and biotic conditions. Ogden, UT: U.S. Forest Service, Intermountain Forest and Range Experiment Station (General Technical Report INT-38). | | | | | | |
| Reference | Mitchell <i>et al.</i> | | | | | | |
| Location | Noel Pauls Brook, Newfoundland, Canada | | | | | | |
| Subject | Salmo salar (Atlantic salmon parr) | | | | | | |
| Intervention | mid channel boulders and a low head barrier dam compared to two mini lunkers (artificial overhangs), wing deflectors and control without in-stream devices (Ripraps were present in all treatments). | | | | | | |
| Methodology | Site comparison data extracted. Three RCT experiments were run in an experimental streambed with six replicates. Experiment three consisted of stocking at natural density at three discharge rates and seeing which habitat (midstream devices, bank side devices, no devices) where preferred by fish. Invertebrates were also sampled | | | | | | |
| Sources of bias | Rigorous experimental design minimizes confounding bias's but the timescales are very short thus the experiment is concerned with local habitat preference rather than population change. The sampling methodology is also problematic as electrofishing gives radically different results to counting. Great care must be exercised to avoid "over weighting" this study as two treatments are compared to the same control at three flow rates creating problems of non-independence. (n has therefore been downweighted to two from six). | | | | | | |
| Outcomes | treatment post intervention | | | control post intervention | | | |
| count of fish numbers | n | m | sd | n | m | sd | |

| | | | | | | |
|--|---|-------|-----|---------|-------|-----|
| lowdischarge mid-channel | 2 | 6.9 | 0.5 | 2 | 7.9 | 0.6 |
| lowdischarge bank | 2 | 7.4 | 0.5 | 2 | 7.9 | 0.6 |
| mediumdischarge mid-channel | 2 | 6 | 0.3 | 2 | 6.7 | 0.5 |
| mediumdischarge bank | 2 | 6.9 | 0.4 | 2 | 6.7 | 0.5 |
| highdischarge mid-channel | 2 | 4.5 | 0.3 | 2 | 5.2 | 0.3 |
| highdischarge bank | 2 | 5.4 | 0.5 | 2 | 5.2 | 0.3 |
| Reasons for heterogeneity | time (5 weeks) , discharge is 0.032m ³ s ⁻¹ (low), 0.063m ³ s ⁻¹ (medium), and 0.13m ³ s ⁻¹ (high), stream gradient (0.41), proportion of cobbles in substrate (low <5%),degree of existing modification (experimental streambed-high), distance from source (unknown), water quality (unknown), size of stream (3m), canopy cover (unknown). | | | | | |
| Pop/pref | habitat preference | | | | | |
| Extraction | average number of fish and sd's were read off figure 4 (with associated recording error). Fish numbers were estimated by night counting. Electrofishing results are also presented at high discharge and are inconsistent with the count data which was extracted preferentially as it is standard across treatments. Other data is presented but it is of lesser relevance. N has been downweighted from 6 to 2 in an attempt to counteract overweighting resulting from multiple extraction of non-independent data (the same controls are used to compare two treatments, and the same experimental site is used to compare three discharge rates) | | | | | |
| Reference | Moerke & Lamberti | | | | | |
| Location | Indiana, USA | | | | | |
| Subject | Fish, various | | | | | |
| Intervention | Re-meandering, other (most) habitat improvements (riparian growth, in-stream LWD, gravel, riffle creation etc) | | | | | |
| Methodology | CI (almost BACI but insufficient data) | | | | | |
| Sources of bias | site comparison therefore variation in initial condition is major source of bias | | | | | |
| Outcomes | Treatment | | | Control | | |
| | n | m | sd | n | m | sd |
| Fish per 100m ⁻¹ in Juday Creek 2 | 69.23 | 35.25 | 2 | 96.15 | 37.96 | |
| Reasons for heterogeneity | time (36 months), mean flow (?), stream gradient (?), proportion of cobbles in substrate ("gravel and cobble substrate"),degree of existing modification (completely new reaches), distance from source (?), water quality (?), size of stream (5.37m average width, 0.39m average depth), canopy cover (moderate (higher in control stretches)). | | | | | |
| Population/Preference | small scale study of habitat preference | | | | | |
| Extraction | Data read from Figure 2, p752, and the latest data sets only were extracted. Calibration= 0.13mm=1 fish. | | | | | |

| | | | | | | | |
|---|--|------|-------------|---------------------------|------|-------------|--|
| Notes | Larger fishes with greater biomass were found in restored reaches compared to the control. | | | | | | |
| Reference | Mossop & Bradford | | | | | | |
| Location | Yukon River Basin, Canada | | | | | | |
| Subject | Oncorhynchus tshawytscha W. (Chinook Salmon) | | | | | | |
| Intervention | Large woody debris | | | | | | |
| Methodology | Multi-site analysis (some space-pseudoreplication) | | | | | | |
| Sources of bias | site comparison with potential for confounding due to variation in initial condition. Data extraction may have increased bias as we extracted an average over for five years of data (sensitivity analysis required). | | | | | | |
| Outcomes | Treatment | | | Control | | | |
| | n | m | sd | n | m | sd | |
| Juvenile Chinook Salmon number per square metre | 5 | 1.03 | 0.740236449 | 9 | 0.61 | 0.774754441 | |
| Reasons for heterogeneity | time (1998-2002 incomplete data), mean flow (unknown), stream gradient (various), proportion of cobbles in substrate (), degree of existing modification (low), distance from source (tributaries close to river confluence), water quality (?), size of stream (2nd to 4th order streams), canopy cover (boreal forest). | | | | | | |
| Population/Preference | Reach scale population estimates using petersen formulae | | | | | | |
| Extraction | Extracted as a Control/Intervention study, where LWD abundance was used to qualify: <30 per 100m = control, >30 per 100m = intervention, data extracted from Table 2 p1959 and Appendix 1. average excluding 2001- this was highlighted by the authors as 2001 appeared as an abnormality. Fish data is for juvenile Chinook salmon. 13 streams sampled are in three distinct regions with slight climatic variations, many may have been cleared (logged) in the past but no data is available. | | | | | | |
| Notes | Median diameter of pool forming debris was 17cm, age count estimated at 70-200 years. One stream discounted as no fish data available (Stoney). | | | | | | |
| Reference | Nickelson <i>et al.</i> | | | | | | |
| Location | (Pacific Northwest) Oregon, USA | | | | | | |
| Subject | Oncorhynchus kisutch (Coho Salmon) | | | | | | |
| Intervention | LWD (Brush bundle data) | | | | | | |
| Methodology | BACI | | | | | | |
| Sources of bias | Did not include "underseeded" streams in their analysis. Data read from graph and sds pooled (sensitivity analysis). | | | | | | |
| Outcomes | Treatment - brush bundles | | | Control- no brush bundles | | | |
| | n | m | sd | n | m | sd | |

| | | | | | | | | |
|-----------------------------------|--|-------------|-------------|---------|-------------|-------------|--|--|
| Coho Salmon per m2 | 24 | 0.39 | 0.12 | 17 | 0.1 | 0.08 | | |
| Reasons for heterogeneity | Time (assumed 2 yrs for extracted data), mean flow (?), stream gradient (?), proportion of cobbles in substrate (?), degree of existing modification (pools were formed by artificial means, either dammed or plunge pool.), distance from source (multiple, no data given), water quality (?), size of stream (?), canopy cover (?). | | | | | | | |
| Population/Preference | habitat preference | | | | | | | |
| Extraction | Took data from Figure 2 "pools combined" for both control and intervention- read from graph and pooled standard deviations. Assumed 0.44mm = 0.01 of a fish per meter2 | | | | | | | |
| Notes | Shows effects of brush bundles in both dammed and plunge pools | | | | | | | |
| Reference | Pretty <i>et al.</i> | | | | | | | |
| Location | New Cut, Evenlode, Little Ouse-Knettishall, Little Ouse-St Helens, Witham, Hiz (deflector sites); Lymn, Ivel, Lark, Great Eau (riffle sites), These are all lowland rivers, UK. | | | | | | | |
| Subject | Cottus gobio (Bullhead) | | | | | | | |
| Intervention | deflectors and riffles (sampled independently) | | | | | | | |
| Methodology | Fish population abundance estimated in treatment and control reaches | | | | | | | |
| Sources of bias | No population estimates exist prior to installation of devices therefore it is not clear if treatment and control sites were similar prior to treatment. Sampling within reaches was not random-20-50 "haphazardly chosen" points were sampled. | | | | | | | |
| Outcomes | Treatment | | | Control | | | | |
| | n | m | sd | n | m | sd | | |
| Little Ouse @ St Helens-deflector | 13 | 0.419354839 | 0.620440357 | 7 | 0.175 | 0.446496332 | | |
| Evenlode-deflector | 13 | 0.265306122 | 0.527218345 | 2 | 0.05 | 0.220721428 | | |
| Hiz-deflector | 4 | 0.2 | 0.410391341 | 2 | 0.1 | 0.307793506 | | |
| Witham Deflector | 10 | 0.333333333 | 0.758098044 | 10 | 0.333333333 | 0.546672274 | | |
| Thame-riffle | 20 | 0.350877193 | 0.550688792 | 3 | 0.06122449 | 0.242226071 | | |
| Lark-riffle | 4 | 0.125 | 0.336010753 | 2 | 0.03030303 | 0.174077656 | | |
| Ivel-riffle | 54 | 0.947368421 | 1.05933019 | 18 | 0.45 | 0.7493587 | | |
| Witham-Riffle | 13 | 0.433333333 | 0.727932042 | 9 | 0.3 | 0.595963433 | | |
| Reasons for heterogeneity | time (Little Ouse @ St Helens-deflector-3, Evenlode-deflector-4, Hiz-deflector-5, Witham deflector-6, Thame riffle-5, Lark riffle-7, Ivel-riffle 8, witham-riffle 5 years), mean flow (unknown), stream gradient (unknown), proportion of cobbles in substrate (unquantified), degree of existing modification (medium), distance from source (unknown), water quality (good), size of stream (5-15m), canopy cover (unknown). | | | | | | | |

| | | | | | | |
|-----------------------------------|--|------|---------|----|------|----|
| Population/Preference | point abundance electrofishing and repeated depletion sampling used to assess population abundance | | | | | |
| Extraction | Raw data was used to provide eight independent data points (rather than two overall points which could have been extracted from the published manuscript) 2001 data was extracted preferentially over 2000 to maximise the timescale. Where data with zero cells occurred in treatment or control effect sizes could not be estimated. Lark riffle control (n was made up to 2) | | | | | |
| Notes | The author provided raw data which has replaced that published in a Journal article as eight points can be included rather than two pooled points. | | | | | |
| Reference | Quinn & Kwak | | | | | |
| Location | Beaver Dam tailwater, Arkansas, U.S.A. | | | | | |
| Subject | Salmo trutta (Brown Trout) Oncorhynchus mykiss (Rainbow Trout) Salvelinus fontinalis (Brook trout) Oncorhynchus clarki clarki (Cutthroat Trout) | | | | | |
| Intervention | wood and rock revetments and planting vegetation to stabilize banks together with in-stream structures (boulders and logs) | | | | | |
| Methodology | BACI design | | | | | |
| Sources of bias | Experimental design minimizes bias but imputation of sds may lead to errors (pooling before and after Sds will overestimate sd of change and underweight the study) Additionally the study setting (Dam tailwater) and stocking may confound the results. | | | | | |
| Outcomes | treatment | | control | | | |
| fish/ha | n | m | sd | n | m | sd |
| Change in brown trout density | 20 | -430 | 200 | 20 | -120 | 50 |
| Change in rainbow trout density | 20 | 800 | 300 | 20 | 100 | 50 |
| Change in brook trout density | 20 | 950 | 500 | 20 | 10 | 10 |
| Change in cutthroat trout density | 20 | 190 | 125 | 20 | 170 | 60 |
| Reasons for heterogeneity | time (2 years), mean flow (very variable- tailwater therefore flow is dependent upon number of turbines active in the dam- average cf 86m3s), stream gradient (unknown), proportion of cobbles in substrate (cf 70%), degree of existing modification (tailwater-high), distance from source (unknown), water quality (unknown), size of stream (unknown), canopy cover (cf 2%). | | | | | |
| Pop/pref | population change estimates were derived using electrofishing and mark recapture using a Petersen single-census, mark-recapture method (Kwak 1992). | | | | | |
| Extraction | Data was extracted from figure 5 (with associated reading error) Change in density before and after treatment was extracted for treatment and control sites and before and after sds were pooled in the absence of data to calculate rate of change sd. N=20 as 20 transects were sampled in treatment and control for microhabitat. As there is no mention of sample size for population estimates, it is assumed the same sampling points were used. | | | | | |

| | | | | | | |
|-------------------------------|--|------|--------|---------|-------|------|
| Notes | microhabitat preference was examined as well as population change | | | | | |
| References | Kwak, T.J (1992) Modular microcomputer software to estimate fish population parameters, production rates and associated variance. Ecology of Freshwater Fresh 1, 73-75. | | | | | |
| Reference | Scruton <i>et al.</i> | | | | | |
| Location | Pamehac Brook, Newfoundland, Canada | | | | | |
| Subject | Salvelinus fontinalis (Brook Trout) and Salmo salar (Atlantic Salmon) | | | | | |
| Intervention | Rewatering and dam removal (replaced with bridges and culverts) | | | | | |
| Methodology | Before/After | | | | | |
| Sources of bias | Data read from graph. Stocking occurred in 1992 although these fry are likely to have left the river as smolts by 1996. Primary source of bias is dewatering of the site prior to enhancement. | | | | | |
| Outcomes | After | | Before | | | |
| | n | m | sd | n | m | sd |
| Total salmonids density/100m2 | 6 | 8.97 | 4.49 | 6 | 11.54 | 5.77 |
| Reasons for heterogeneity | Time (6 yrs (72months)), mean flow (?), stream gradient (?), proportion of cobbles and boulders etc in substrate (high), degree of existing modification (some- dams & culverts had been put in, stream course diverted, stream bed had been empty for 20 years), distance from source (?), water quality (?), size of stream (?), canopy cover (?). Data collected for some of these but not presented. | | | | | |
| Population/Preference | population estimates from electrofishing | | | | | |
| Extraction | Data extracted only for points below the diversion from 1990 and 1996, data from above not included as confounded control, so before after for downstream read from Figure 2, p151. Also, data for total salmonids was extracted as trout and salmon data was divided by age class. | | | | | |
| Notes | Trout decline whereas salmon increase- biomass increases too. | | | | | |
| Reference | Sweka & Hartman | | | | | |
| Location | Middlefork River, Appalachians, West Virginia, USA | | | | | |
| Subject | Salvelinus fontinalis (Brook Trout) | | | | | |
| Intervention | Large woody debris | | | | | |
| Methodology | BACI | | | | | |
| Sources of bias | Sample reaches were over 8 tributary streams from the same river, control and treated stretches were 100m apart. Bias in calculation as pooled SD/SE (sensitivity analysis). | | | | | |
| Outcomes | Treatment | | | Control | | |
| | n | m | sd | n | m | sd |

| | | | | | | |
|---|--|-------|-------------|---|--------|-------------|
| mean trout density per 100m2 | 4 | -0.83 | 1.21 | 8 | -2.25 | 0.590434162 |
| Reasons for heterogeneity | time (4 years), mean flow (), stream gradient ("relatively high"), proportion of cobbles in substrate ("dominated by coarse substrate"), degree of existing modification (), distance from source (), water quality (), size of stream (small), canopy cover (70-80%). | | | | | |
| Population/Preference | habitat preference due to small spatial scales (treatments and controls separated by 100m) | | | | | |
| Extraction | Data extracted from figure 5 p373 for Age 1+ fish as longest time scale was presented, also more reflective of population not spawning. Within stream data was chosen as although smaller scale, offers control/intervention rather than degrees of intervention (as in "among stream"). SD was calculated using pooled SE for before and after for the control and intervention separately. | | | | | |
| Notes | LWD caused pool formation in lowest gradient streams. No overall effect of LWD in-stream, but among stream, those with greatest amounts of LWD had greatest brook trout densities. | | | | | |
| Reference | Wang et al. | | | | | |
| Location | Spring Creek and Joos/Eagle Creek, Wisconsin, U.S.A | | | | | |
| Subject | Salvelinus fontinalis (Brook trout) Salmo trutta (Brown Trout) | | | | | |
| Intervention | barnyard runoff controls, manure storage, contour ploughing, reduced tillage, stream bank fencing, sloping and rip rapping | | | | | |
| Methodology | Robust BACI design monitored over 10 years at watershed scale | | | | | |
| Sources of bias | BACI experimental design and watershed scale implementation minimize bias but prevents disassociation of individual interventions. Data extraction was undertaken across streams (rather than using pseudoreplicates) in the absence of within stream variance measures, resulting in potential underweighting of the study (sensitivity analysis). | | | | | |
| Outcomes | Treatment | | Control | | | |
| | n | m | sd | n | m | sd |
| Brook Trout annual catch Joos/Eagle Creek | 2 | 0.3 | 0.424264069 | 4 | 56.15 | 112.1000297 |
| Brook Trout annual catch Spring Creek | 3 | 0 | 0.01 | 4 | 19.75 | 31.54113716 |
| Brown Trout annual catch Joos/Eagle Creek | 2 | 0.05 | 0.070710678 | 4 | 82.2 | 156.8198754 |
| Brown Trout annual catch Spring Creek | 3 | 1.8 | 1.2489996 | 4 | 18.675 | 28.19661623 |
| Reasons for heterogeneity | time (10 years), mean flow (unknown), stream gradient (unknown), proportion of cobbles in substrate (unknown), degree of existing modification (high), distance from source (unknown), water quality (unknown), size of stream (unknown), canopy cover (unknown). | | | | | |
| Population/Preference | population estimates given timescale and watershed level spatial scale | | | | | |
| Extraction | data was extracted as presented in Table 5 with n and sd calculated from the means presented (resulting in underweighting- see sources of bias- this may be counteracted by the extraction of four data points by one study). | | | | | |
| Reference | Wu et al | | | | | |

| | | | | | | |
|---------------------------------------|---|--------|------------|---------|--------|-------------|
| Location | Middle Fork, John Day River, Oregon, U.S.A | | | | | |
| Subject | Oncorhynchus mykiss (Rainbow Trout) | | | | | |
| Intervention | stream bank cover | | | | | |
| Methodology | Site comparison | | | | | |
| Sources of bias | Factors other than bank cover could account for variation in fish number. Unwarranted statistical assumptions may have been made in data extraction (sensitivity analysis) | | | | | |
| Outcomes | Treatment | | | Control | | |
| | n | m | sd | n | m | sd |
| camp creek-trout abundance | 8 | 1.41 | 0.218 | 4 | 0.98 | 0.253 |
| middle fork-trout abundance | 19 | 0.32 | 0.75 | 6 | 0 | 0.589 |
| Reasons for heterogeneity | time (na-site comparison), mean flow (mean discharge cc 0.05, mf 0.59m ³ /s), stream gradient (cc 1.27, mf 0.69), proportion of cobbles in substrate (unknown), degree of existing modification (unknown), distance from source (unknown), water quality (unknown), size of stream (cc 3.09, mf 8.18), canopy cover (unknown). | | | | | |
| Population/Preference | data was collected over several years from 64 catchments and is probably therefore more representative of population than habitat preference. | | | | | |
| Extraction | Data was extracted from table 4. treatment = 4, control = 1 for both camp creek and middle fork. Sds and n were estimated from t values and p values using statistical tables (It is worth noting that these do not coincide with the number of observations reported by the authors in table 1 or the stated replication (n=64)). | | | | | |
| Reference | Zika & Peter | | | | | |
| Location | Furstentum Liechtenstein, W Europe | | | | | |
| Subject | Salmo trutta (Brown Trout) | | | | | |
| Intervention | Large woody debris | | | | | |
| Methodology | Site comparison | | | | | |
| Sources of bias | Variation in initial conditions could confound results. Imputation of sds could compound any bias (sensitivity analysis required). 70 000m ³ of raw sewage entered system upstream during final year. | | | | | |
| Outcomes | Treatment | | | Control | | |
| | n | m | sd | n | m | sd |
| Brown Trout abundance per 100m stream | 7 | 151.67 | 6.99066861 | 7 | 102.67 | 11.16216334 |
| Reasons for heterogeneity | time (1995-1997), mean flow (?), stream gradient (0.06-0.18%), proportion of cobbles in substrate (), degree of existing modification (channelised, partially with conduits), distance from source (?), water quality (?- see note about sewage in s. of bias), size of | | | | | |

| | |
|-----------------------|---|
| | stream (4m mean width), canopy cover (some trees along banks). |
| Population/Preference | habitat preference due to small spatial scale. |
| Extraction | Data extracted from Table II, p360. Took sum of observed and expected control and calculated (imputed) SD from the 7 sample data given. N=7 from data taken rather than true n. |
| Notes | mean water velocities decreased and no and vol of pools increased in treated sections. |

APPENDIX 2 – REVIEWS (27)

| Reference | Topic | Summary Conclusions |
|------------------------|---|---|
| Allouche (2002) | The role of in-stream cover for riverine fishes. | This review looks at the role of in-stream cover and its effects on the distribution of fish, especially the importance at a habitat unit scale. States the three main reasons for the importance of in-stream cover are protection, shelter and isolation from competition. |
| Armstrong (2003) | Habitat requirements of Atlantic salmon and brown trout in rivers and streams | Review looks at factors affecting the distribution and abundance of salmon and trout. Suggests that habitat structures have greatest affect when populations are near carrying capacity, and as such concludes that it is important to understand population bottlenecks in order to determine whether habitat manipulation is appropriate. Author presently finds predictive models of the effects of most habitat modifications hard to derive. |
| Bash & Ryan (2002) | Monitoring of stream restoration projects. | Found that monitoring does not always occur, and that the type and quality of data collected varies widely for the projects that do monitor. |
| Bayley (2002) | The responses of salmon and trout to habitat changes. | A review of studies on fish responses of salmon and trout to habitat change through both restoration and environmental factors. The review was undertaken after a thorough journal literature search. Author reports that many studies were of a short time scale and used poor statistical analysis, and that confounding means that studies are often not able to clearly indicate which factor is responsible for changes. |
| Cowx & Welcomme (1998) | Rehabilitation of rivers for fish | Manual looks at the methods and projects undertaken for rehabilitation of rivers, and how biological value can be added to aesthetic restoration projects at little additional cost. |

| | | |
|---------------------------|--|---|
| Cowx et al (2003) | The Bullhead (<i>Cottus gobio</i>) | Looks at the ecology, distribution and habitat preferences of the Bullhead, <i>Cottus gobio</i> , part of the Conserving Natura 2000 Rivers Series. |
| Finlayson et al. (2005) | Trout restoration in national forests. | Discusses the projects and work done so far which attempt to restore trout populations, and looking at this evidence debate whether they are being successful or otherwise. |
| Glen (2002) | Recovery of Salmon and Trout following habitat enhancement works | Reviews case studies of habitat enhancement, including removal of obstruction to migration, with both economic and ecological factors included. Findings suggest that habitat enhancement projects do work, and this can be seen within a short timescale, with removal of migration barriers giving the greatest results. Also finds other habitat enhancement projects are successful but acknowledges the need for monitoring over a longer timescale. |
| Hamilton (1989). | Response of Juvenile Steelhead to In-stream Deflectors in a High Gradient Stream | Found that there was little impact on fish populations from the installation of deflectors, which was attributed to the high gradient of the study reaches. Literature was found to reflect these findings- the most successful studies had been carried out in lower gradient streams. |
| Hendry et al. (2003) | Habitat management for rehabilitation of salmonids | Looks at the main areas to be taken into account in salmonid habitat management. Paper states that land-use regulation is required due to the high levels of degradation that have occurred, and that root causes of problems should be addressed in mitigation and enhancement works. |
| Holmes (1998). | A review of river rehabilitation in the UK, 1990-1996 | Reports a lack of consistency in recording or reporting of habitat rehabilitation schemes. Found that the most commonly used methods were often the cheapest, such as restoration of riparian growth, or those river restoration projects targeted at a particular key species (often bird or mammal). |
| Keeley et al (1996) | Estimating production benefits of habitat improvement initiatives. | Summarised the findings of 30 studies that included control and intervention sites in order to calculate the potential production benefits of stream restoration initiatives on salmonids. Suggests off-channel habitat may increase numbers, and increases in spawning substrates should lead to great increases in numbers. |
| Kauffman & Krueger (1984) | The effects of riparian grazing | Looks at general effects of riparian grazing, includes studies regarding fish. Concludes that riparian grazing affects salmonid fish populations as a result of changes to water temperature and reduction of organic matter, and states that riparian management is an important part of fisheries management. |

| | | |
|---|--|--|
| Kauffman et al (1997) | Restoration of riparian and stream habitat | Suggests that a holistic approach concerning both riparian and stream restoration needs to be used, and that often restoration efforts don't attempt to stop the processes causing degradation of the land. |
| Kauffman et al. (1993) | Fish habitat improvement projects and management recommendations | Reviewed habitat restoration projects over a number of sites. Report looks at the restricting factors that need to be taken into account and the implementation of these projects. |
| Kondolf, G. M., J. C. Vick, et al. (1996) | Salmon spawning habitat rehabilitation in the Merced, Tuolumne, and Stanislaus Rivers, California: An evaluation of project planning and performance | Found that projects did not always take into account features that modified the intended workings of modifications, such as upstream dams on riffle sequences. Also found that some of the projects actually increased suitable habitat for salmonid predators, negating positive outcomes of the improvement features. |
| McGrath, C. C. (2003) | Whitewater parks | Study looked at the effects of Whitewater parks on fish populations. Whitewater Parks commonly contain engineered versions of riffles and pools and therefore should provide a good habitat for fish, especially as shelter should protect them from recreational use of the habitat. Conclusions derived from comparisons with data from non-park locations as research in that area extremely limited. |
| McPhail and Baxter (1996). | A review of Bull Trout (<i>Salvelinus confluentus</i>) life history and habitat use in relation to compensation and improvement opportunities | This review looks at the biology and habitat use of fish at the different stages of their life cycle, and some of the habitat issues of concern which may impact on choice of habitat remediation. |
| Opperman et al (2006) | Large woody debris in streams | This guidance document discusses the role of LWD in stream and river habitats in relation to salmonids, and states the importance of both living and dead woody debris in the ecosystem. |
| Pusey and Arthington (2003). | Importance of the riparian zone to the conservation and management of freshwater fish: a review. | Although with an Australian bias, this review describes the role and interactions between stream and riparian zones, and concludes that attention to riparian zones are of key importance when planning restoration work. |
| Roni et al (2002) | The effects of habitat improvement studies. | A review of habitat improvement studies. Concludes that little is known about the effectiveness of in-stream habitat improvements. |
| Roni et al (2005). | Habitat rehabilitation for freshwater ecosystems. | This review discusses the effectiveness of habitat improvement projects and translates the findings into guidelines to help guide and improve future restoration and mitigation |

| | | |
|------------------------------|---|--|
| | | attempts. |
| Rosenfeld (2003) | The assessment of fish habitat requirements. | Looks at the different scales at which habitat assessment take place, and some of the factors that affect these. States the need for clearly defined habitat requirements to be understood to make habitat restoration and species management more effective. Review discusses the importance of understanding the optimal habitat configurations for fish species. |
| Schmetterling et al. (2001). | Effects of riprap bank reinforcement on stream salmonids | This review looks at the effects of using riprap to reinforce river and stream banks, and find that although it may provide some benefits on stream banks that have been severely degraded, the use of riprap goes against current restoration philosophy and impedes future attempts to restore the stream reach. Concludes that riprap does not provide an alternative to riparian cover and the benefits this offers to Salmonids, such as LWD, undercut banks and cover. |
| Summers et al (1996) | Restoration of Riverine Trout Habitats | This guidance manual describes the methods used for restoring riverine habitats, specifically for trout species. |
| Thompson (2006) | The pre-1980 use of in-stream structures to improve streams and fish populations. | This review looks at studies from pre-1980, which attempt to show the positive effects of in-stream structures. The review finds that little evidence exists to show that in-stream structures improve fish populations and concludes that their effectiveness to increase fish populations should not be presumed. The author also notes that many of the studies are confounded, as fishing pressures are not accounted for. |
| Ward & Ward (2004) | Hydroelectric development mitigation | Looks at habitat restoration initiatives aimed at mitigating the effects of hydroelectric operations within the Columbia River Basin using various methods. |

APPENDIX 3 – QUALITATIVE REFERENCES (68)

| Reference | Subject | Intervention | Outcome | Summary findings | Methodology |
|--------------------------------------|--------------------------|--|---------------------|---|--|
| Bank cover deflectors | | | | | |
| Champoux et al (2003) | N/A | Bank-cover deflectors | N/A | Concludes that the siting of bank cover deflectors needs to be considered in relation to the different geomorphic contexts encountered in river reaches as effectiveness is dependent on other factors. | Looks at the long-term changes in river morphology, and as a by-product, fish habitat suitability, before and after installation of bank-cover deflectors. Data sets from 1963, 66 and 99. |
| Bouldering | | | | | |
| Huusko & Yrjölä (1997). | Brown Trout | Channel modification and boulder structure placement | Habitat suitability | The effects of channel modification and boulder structure placement using PHABSIM suggests that increased diversity created conditions more likely to sustain a larger trout population. | PHABSIM based on before and after field site data |
| Maki-Petäys et al (2000) | Brown Trout and Grayling | Heterogenous substrate and flow level | Location | Looked at microhabitat preference of age-0 brown trout and grayling in two artificial streambeds at high and low flow. Found that trout spatial patterns were different in flume types. Concludes that rehabilitation programmes should aim to provide a broad range of microhabitats, and restoration aimed at one particular species may not provide suitable environmental conditions for other species in the same habitat. | Laboratory conditions experiment of fish habitat preference in both an artificial channel and a "restored" channel, with highly heterogenous substrate |
| Smith et al (2005) | Rainbow Trout | Prismatoidal shapes (producing turbulence) | Fish occupancy | Paper concludes that the angular nature of in-stream devices could promote higher turbulence than natural objects, meaning potentially reduced habitat occupancy by drift-feeding salmonids. | Measured fish location and focal points in relation to flow turbulence in a laboratory flume. |
| Confounded – multiple factors | | | | | |
| Binns (1994) | Trout | Habitat management – riprap and | Population density | In-stream improvement structures were found to increase numbers of trout of different age classes over a long time period. The degraded habitat had | Triple-pass electrofishing using block nets at sampling sites. No variance measures are presented for fish parameters. Controls |

| | | | | | |
|---------------------------|------------------------------------|---|--|---|--|
| | | improvement devices | | been restocked prior to works. Wooden plunges seemed to be easy to install and created good pool habitat. | established after treatment. |
| Connolly & Jezorek (2001) | Steelhead and other salmonids | Different Habitat sites-unclear as to what | Biomass of salmonids | Monitored fish abundance at a number of different habitat sites but do not state which samples relate to what habitat types | Electrofishing and PIT-tagging |
| De Jong et al (1997) | Atlantic salmon and brook trout | Boulder clusters, v-dams and half-log covers | Salmonid density | Suggests that the restoration techniques were successful although success is not solely attributed to the devices. | BACI with one control site. Multiple-pass electrofishing using nets. Population estimates made using MICROFISH 3.0. |
| Environment Agency (2003) | Salmon | Multiple-riparian, fish pass, water quality | Greater fish stocks through an Action Plan | Project to improve river habitat for salmonids included much riparian restoration- costed actions are presented | Assessment and creel data assembled and assessed to decide what steps to take next to restore the River Wye. |
| Everest et al (1986) | Chinook, Coho salmon and steelhead | Off-channel ponds, in-stream bouldering, berms (v-dams) and LWD, gravel | Population and smolt production | Several interventions used in an attempt to improve the habitat for salmonids in the river system, which was previously degraded and lacked suitable microhabitats for sheltering and smolting. | Data provided in other papers covered by the search with longer time-spans |
| Everest et al (1985) | Chinook, Coho salmon and steelhead | Off-channel ponds, in-stream bouldering, berms (v-dams) and LWD, gravel | Population and smolt production | Several interventions used in an attempt to improve the habitat for salmonids in the river system, which was previously degraded and lacked suitable microhabitats for sheltering and smolting. | Data provided by other papers covered in the search with longer time-spans |
| Goldberg et al (1995) | Chinook and sockeye salmon | Debris structures and channel modifications | Microhabitat preference | Use of in-stream devices to mitigate effects of flow alteration downstream of a hydroelectric dam showed that fish preferred debris structures to engineered in-stream structures and both over natural (comparator) sites. | Snorkeller observations and electrofishing surveys using stopnets around structures. Data not extracted as species figures presented as percentages of total fish counted. |
| Hale (1969) | Trout | Habitat improvement-artificial | Changes in angling and standing crop | Increase in fish abundance in treated sections after improvement work in YOY and older trout. Angling catch rate (fish per man hour) increased in treated | Electrofishing of control and altered sections and angling creel data collected. |

| | | | | | |
|-----------------------|-------------------------------------|--|---------------------------------|--|---|
| | | deflectors and log shelters | | sections but decreased in the reference sections. | |
| Hubert & Joyce (2005) | Cutthroat Trout(Age-0) | Habitat type (artificially created) | Presence of trout | Stream modified with artificial pools and riffles and riparian (willow) planting is sampled for Cutthroat Trout (age-0) at riffle, riffle margin, pool margin and backwater. Stream margin habitats more popular with trout than riffles. | Field survey using electrofishing |
| Hunt (1976a) | Trout | Stream bank covers and current-deflector devices | Brook trout production | Studies showed habitat was degraded and so major renovation was undertaken, leading to changed morphology and an increase in fish numbers. Labour and equipment proved to be highly costly compared to the actual cost of the devices. | Semi-annual electrofishing surveys to measure the number of fish stock in the river. Data extracted from other papers by author. |
| Hunt (1969) | Trout (Brook trout) | Bank covers and current deflectors | Increased production | Increases in trout numbers attributed to higher overwinter survival than recruitment or growth. | Electrofishing to enable mark-recapture. Multiple papers by author cover experiment and so data extracted from another source. |
| Hunt (1976b) | Trout | Bank covers and current deflectors | Biomass, size and number | Paper shows that although increases were observed during the first few years after installation of devices, the greatest improvements in fish size and number became apparent after a longer time scale (after the initial three years). | Electrofishing to enable mark-recapture. Multiple papers by author cover experiment and so data extracted from another source. |
| Keith et al (1991) | Salmonids | Riparian and in-stream cover | Abundance | Findings showed that abundance decreased in all stream sections, but at a greater rate in the closed canopy cover sections. In streams with and without in-stream cover, the only noticeable result reported was greater abundance in Age-1 and older fish in streams with in-stream cover than without. | In-stream cover removed from pools. Alder brush bundles placed in sections and overhead alder cover removed from some sections. Some sections were stocked with fish to increase numbers. Electrofishing technique used for fish measurement. |
| Lacey & Millar (2004) | Salmonids-Coho salmon and steelhead | In-stream LWD and rock groyne structures | Modelled fish habitat increases | Paper reports that modeling simulations suggest greatest increase in the weighted useable area at periods of high flow. | Use of 2D monitoring software (River2D) based on field survey data. |

| | | | | | |
|-----------------------------|--|---|---------------------------------|---|---|
| Lamouroux and Capra (2002). | Fish | Habitat alteration | Modeled outcomes. | Simple predictions of in-stream habitat model outputs for target fish populations- suggest they should be used as part of the restoration planning process. | Use of habitat modeling software compared to real site derived data. |
| Mamorek et al (2004) | Salmonids | Multiple | Population increase | Report on multiple watersheds which have had restoration work carried out- Findings ask for more and better information on projects; hypotheses and monitoring were lacking; data retrieval requires significant effort; space & timing need more thought in experiments; scale of studies and comparative scale of inferences are not appropriate. | Data assembly and synthesis of projects carried out in the region to evaluate their successes. |
| O'Grady (1995) | Salmonid rivers | Enhancement works | Increased fish production | Looks at river enhancement in Ireland, including cost-benefit factors and the importance of monitoring. Concludes that in-stream and riparian-pruning methods are more effective than stocking or smolt ranching. | Reviews and discusses the costs and effects of a number of in-stream enhancement projects |
| Shields et al (1998) | Fish- mainly cyprinids and centrarchids. | Addition of spurs to stone toe- also included willow planting | Fish and fish habitat. | Found that the addition of the spurs to the stone toe created different habitat features that may be of preference to different fish species than the straight run sections present before- fish populations reflected this but in part was confounded by beaver dams. | Stone spurs added to toe and willow planted on opposite bank. Physical habitat characteristics and fish types and numbers monitored. Beaver dams affected fish populations. |
| Summers et al (1996) | Trout | Rehabilitation | Restoration of populations | Guidance manual on restoring rivers for trout populations. Discusses limitations of knowledge. | Contains further reading at each section on each type of habitat alteration intervention although no useable data |
| Swales & O'Hara (1983) | Dace, chub and other species | Low dams, current deflectors and artificial cover structures | Fish distribution and abundance | Paper found that fish populations increased after habitat improvement had taken place, but also that fish relocation had occurred, with large densities of fish being found around the improvement structures, especially the artificial cover devices and the pools associated with the low dams. | Boat electrofished using stopnets for each study section before and after the devices were installed. |

| | | | | | |
|----------------------|---|--|---|--|---|
| Tarzwell (1938) | Trout | In-stream devices- unclear | Fish yield and creel counts | Stream improvement devices increase the food production, and the growth rate and number of trout compared to an unimproved stream. | Several studies carried out including invertebrates and creel counts but stocking had taken place in control reach at different levels. |
| Thompson (2002) | Channel Morphology | In-stream improvement structures | Habitat changes in morphology and environment | Paper found over a long term many in-stream structures had lead to levels of unintended bank erosion and a loss of riparian vegetation and overhead cover in modified reaches. | Fieldwork involved site histories and measurement of 40 in-stream structures. |
| Vehanen et al (2003) | Grayling (<i>Thymallus thymallus</i>) | Constructed islands, reefs, and cobble and boulder structures | Habitat preference | Paper reported the importance of awareness of other factors operating on a river system that has been identified for restoration, as these may impact on any improvement attempts. High fishing pressures, and underlying issues such as nutrient load are two such factors mentioned. | 2D hydraulic modeling used on data from echo sounder, Doppler device, tachometer and scuba surveys. Tagged grayling were monitored and tracked. |
| Wu et al. (2000). | Steelhead Trout | Stream Bank Improvements (Vegetation Stability Index) | Abundance | Looks at the economic effects of stream restoration projects in Oregon but also includes some data from case studies regarding vegetation cover and fish numbers. | Data sets used from other studies. |
| Yrjana et al (2002) | Salmon | Confounded habitat changes & stocking | Density of wild salmon fry | Stocking and wild fry densities in modified river channels undergoing restoration have limited success, wider work needs to be undertaken | Field surveys using electrofishing; catch data |
| Yrjana et al (2002) | Salmon | Spawning, habitat & nursery improvement measures and fishways. | Increase populations | Despite a number of measures to improve habitat and increase numbers, recovery of salmon numbers appears to be slow. Concludes that in-stream restoration and stocking are not enough, and wider schemes such as integrated river management are needed to increase salmon numbers. | Rod catch data, electrofishing for parr, smolt trapping and mark recapture have been used to measure fish numbers following habitat enhancement- rivers stocked heavily throughout. |

| | | | | | |
|--------------------------|-------------------------|--------------------------------|--------------------------|--|---|
| Flow modification | | | | | |
| Biggs et al (1998) | Macrophytes and aquatic | River channel restoration e.g. | Species richness, rarity | Plant species showed recolonisation to at least pre-works levels during the survey time, whereas | BACI design with upstream control sections. Macroinvertebrates surveyed |

| | | | | | |
|---------------------------|---------------------------------|--|--------------------------------------|--|--|
| | macroinvertebrates | remeandering | and abundance | macroinvertebrates took longer to recover. Abundance increased but species richness was slower to recover. | using kick and sweep sampling or core sampling. |
| Booker & Dunbar (2004) | Chub, roach and dace | Channel modification- straightening | Modelled habitat suitability | Models channelled urban rivers to measure impact of channelling on available habitat. | PHABSIM used based on data from two study sites using degrees of modification |
| Capra et al (2003) | Brown trout | Natural and bypassed stream reaches | Fish abundance | Software to predict trout populations in streams suggests discharge fluctuations effect populations positively as ease effects of high discharge | EVHA and MODYPOP modeling software used, compared with electrofishing data |
| Connor et al. (2003) | Chinook salmon | Summer flow augmentation | Survival | Measure survival of tagged salmon in a flow augmented river but control is hypothetical model- predicts summer flow augmentation enhances survival | Field sampling and PIT-tagging but using a modelled control |
| Connor & Pflug (2004) | Salmon – Pink, Chum and Chinook | Water flow | Distribution and density (abundance) | Measure abundance and spatial distribution of salmon in three reaches before and after flow management measures- suggests salmon numbers improved after implementation. | Field study for flow retrieval, fish data acquired from WDFW and compared for before and after |
| Covington & Hubert (2003) | Brown Trout | Summer flows | Abundance and biomass | Measure trout abundance at sites with natural flow and "less than natural" flow, suggestion higher and lower numbers and biomass of trout respectively. | Sites surveyed, fish abundance estimated for control and intervention |
| Hagen & Baxter (2004) | Rainbow Trout | Habitat types and channelisation | Population size | Investigate habitat use and abundance of trout in watershed system using radio telemetry- showed fish preferred deeper pools in low flow and didn't like channelised sections. | Radio telemetry of angled catches and diver counts |
| Jutilla et al (2001) | Brown Trout | In-stream and catchment characteristics in dredged streams | Density | Study of rivers with both dredged and non-dredged sample sites to assess abundance of trout, shows trout prefer the more complex habitats and pools | Field surveys using electrofishing at control and treated sites |
| Oscoz et al (2005) | Fish - various | Channelisation | Fish density and biomass | The effects of channeling a stretch of river during highway construction on fish populations upstream, downstream and in the channeled section. | Field sampling using electrofishing with control and treatment sections |

Compares channeled with natural, and finds lower density and biomass of fish in modified sections.

| Habitat characteristics | | | | | |
|--|----------------------|---------------------------------------|---------------------------------------|--|---|
| Bryant et al (2005) | Anadromous salmonids | Habitat variables | Population estimates | Monitoring aquatic habitat for salmonids can give good estimates of population. Relationships between habitat features are not always clear but can be demonstrated with pools and LWD. | Used statistical models to calculate fish populations and compared to field data from correlative data from multiple sites. |
| Franco & Budy (2005) | Trout and salmon | Biotic and abiotic habitat components | Distribution, abundance and condition | Looks at trout and salmon populations along a river in relation to biotic and abiotic factors inc substrate size | Field sampling using electrofishing, dissection |
| Legalle et al. (2005). | Bullhead | Microhabitat features | Weighted useable area predictions | Compares stretches of reach with differing habitat characteristics with Bullhead distribution | Field sampling using electrofishing |
| Legalle et al. (2005) | Bullhead | Stream width, slope and substrate | Population density | Compares stretches of a river with differing habitat characteristics with Bullhead distribution | Field sampling using electrofishing |
| Rich et al (2003) | Bull Trout | Local habitat features | Fish occurrence | Bull trout were positively associated with presence of LWD and channel width, other associations detailed too. | Correlative data compiled on habitat conditions of 112 streams, which were single-pass electrofished to assess fish occurrence. |
| Roni (2002) | Oncorhynchus sp. | Habitat characteristics | Fish density, size and weight | Greater numbers of often larger fish were found in pools compared with riffles. Suggests reach or watershed scale characteristics are better predictors of fish density than microhabitat characteristics. | Correlative study of 30 streams comparing habitat variables with fish and salamander densities using multiple-removal electrofishing. |
| Sharma & Hilborn (2001) | Coho salmon | Watershed characteristics | Smolt abundance | Study reports that pool and pond densities in streams act as an indicator of smolts and productivity. | Correlative study comparing watershed characteristics at different sites in relation to smolt abundance, ascertained from fish count studies. |
| Land management & catchment scale works | | | | | |

| | | | | | |
|-------------------------------|---------------------------------|--------------------------------------|--|--|---|
| Erman & Mahoney (1983) | Macro-invertebrates | Logging buffer strips | Macro-invertebrate diversity | Study observed a positive association between buffer width and macro-invertebrate diversity. Concludes that narrow buffers are no more effective than rivers without buffer strips in the recovery of logged ecosystems. | Water was sampled, river characteristics were recorded and macro invertebrate diversity measured using Surber sampling. |
| Knapp et al (1998) | Golden Trout | River width and bank vegetation | Age-0 trout and redd density | Compares stream morphology on trout spawning at both narrow, vegetated sites and grazed wider reaches- grazed areas had higher densities of smaller fish, and spawning habitat was the limiting factor. | Field survey using electrofishing on narrow and grazed river sections |
| Koed et al (2006) | Atlantic salmon and brown trout | Dyke removal and re-meandering | mortality | Restoration works caused development of a lake which led to increased threat of predation for migratory fish. | Tagging and tracking individuals, electrofishing for smolts suspected of being predated. |
| Opperman & Merenlender (2004) | Steelhead | Riparian restoration | Improved fish habitat | Paper finds that, when compared to in-stream devices, riparian restoration produces more comprehensive and sustainable benefits, as well as being more cost-effective. | Riparian restoration and use of exclusion fencing on treatment reaches- changes in habitat compared with those in control reaches. Compares cost and performance of in-stream v riparian restoration. |
| Rieman et al (2001) | Salmonids | Federal land management alternatives | Predicted status and distribution of salmonids | Findings from this study suggest that an active but cautious management plan would yield the best results, with an aggressive scheme providing the worst results, and the status quo falling somewhere in the middle. | Used Bayesian Belief Networks to estimate effects of different management schemes on salmonid populations over 100 years. |
| VanDusen et al. (2005). | Brook Trout | Logging | Density and biomass | Brook Trout habitat preferences at sites that have been subjected to logging shows recently logged areas have smaller populations than areas logged previously. | Field survey using electrofishing |
| Log Jams | | | | | |
| Pess et al (2005) | Salmonids | Engineered log jams | Fish density | Engineered log jams appear to increase number of juvenile salmonids and provide preferential habitat compared with control sites. | Control and treatment data collected, some before data available. Fish counts using snorkel lanes. |

| Revetments | | | | | |
|---------------------------|--|---|----------------------------------|---|---|
| O'Grady et al (2002) | Salmon and trout | Log bank revetment (and minor debraiding) | Fish density | Log bank revetments were used along a degraded Irish river. Results indicate altered channel morphology and the beginnings of plant recolonisation. Increases of fish stocks were reported for the modified reaches compared to control sections. | Electrofishing data used to measure abundance. Not all sections monitored over same time period. Insufficient data presented for robust extraction. |
| Riffles | | | | | |
| Gore et al (1998) | Benthic (macro invertebrate) communities | Artificial riffles | Habitat suitability | Model effects of two artificial riffles put into a stream using PHABSIM, focuses on the benthic macro invertebrate populations suitable habitat | PHABSIM habitat simulation |
| Weirs | | | | | |
| Gowan (1995) | Trout | Low log weirs | Population | Found that abundance and biomass of adult fishes increased, but believed to be due to immigration rather than population increase. | Used mark-recapture to look at trout responses to low log weirs. Data not extracted as thesis abstract only obtained. |
| Woody Debris | | | | | |
| Bilby & Fransen (1992) | Fish inc Steelhead and dace | LWD | Fish density | Addition of LWD increased pool area in treatment sections. Fish numbers were found to increase at all sites. Dace increased most in the enhanced reach containing LWD. | Methodology not presented. Data gathered at three sites, one with added LWD, and two without. Of the two without, one had canopy cover and the other did not. |
| Brooks et al (2004) | Fish- Australian species | Woody Debris | Fish abundance, species richness | Engineered logjams appear to improve species richness and abundance in Australian fish species. | BACI field surveys using electrofishing |
| Bunt et al (1999) | Brown Trout | Flow (pulsed discharge), woody debris & pools | Fish movement | Looks at effects of high and low flow on Brown Trout populations by measuring fish movements to show microhabitat preference- pools and LWD most popular. | 2D modeling of available habitat, fish radio-tagging |
| Coulston & Maughan (1983) | Salmonids | Removal of natural woody debris | Trout numbers | Looking at the effects of removal on trout populations, so the habitat restoration in this example is removal of woody debris | BACI experimental design whereby restoration is removal of LWD (degradation) |

| | | | | | |
|---------------------------|---|-----------------------------|---|--|---|
| Fausch & Northcote (1992) | Coho salmon and cutthroat trout | LWD | Biomass | Individual and overall fish biomass was greater in the complex sections that contained LWD than those where the LWD had been removed. | Naturally occurring LWD was removed from sections of a stream and these were compared with reaches where LWD had not been removed. Not included for meta-analysis as LWD removal was a form of habitat degradation and so is not the same as addition or natural variation. |
| Gore & Hamilton (1996) | trout & benthic macroinvertebrate potential habitat | weirs | increase in potential habitat | Models effects of weirs in variable flow conditions on fish (trout) and benthic macroinvertebrate populations. | Comparison of PHABSIM and published data on a comparable water body. |
| Harvey (1998) | Cutthroat trout | Naturally occurring LWD | Retention and immigration | Measuring pairs of complex and simple ponds (complex ponds containing naturally occurring in-stream matter, usually LWD, tree roots and boulder) fish were tagged and measured over time to see which pools were preferred. Concludes that the presence of woody debris appeared to affect retention but not immigration or growth. | Multiple pass electrofishing used to collect fish, which were injected with a PIT tag into body cavity and monitored at river sites. |
| Keim et al (2002) | Salmonids | LWD | Increase in physical habitat | Paper looks at effects of LWD in creating physical habitat for salmonids when LWD source is from riparian alder rather than conifers. | Site surveys in stream sections before and after the addition of LWD to monitor changes in the channel morphology. |
| Larson et al (2001) | Streams | Large woody debris addition | Habitat condition and benthic macro-invertebrates | Looks at a number of projects within the Puget Sound Lowland urban basin in Washington, and the effects of LWD on benthic macro invertebrates and environmental conditions. Found less effectiveness of LWD addition in urban rivers than has been reported for forested rivers, and concluded that LWD did not improve the biological conditions. | Selected six restoration projects and measured characteristics. Used a Surber sampler to identify macro invertebrate populations. |
| Neumann & Wildman (2002) | Brook trout and brown trout | LWD | Habitat use | Findings indicate that both LWD and FWD correlate with trout density, and that woody debris is an important part of habitat. | Site inventories and fish counts by snorkel counts. |

| | | | | | |
|---------------------------|------------------------------------|---|---|--|---|
| Nicol et al (2004) | Carp and Australian native species | Habitat restoration using LWD | Distribution and abundance | Findings showed that Carp were not strongly associated with habitat features, whereas native species were strongly associated with LWD. | Compared treatment and control reaches, fish measured using boat mounted electrofishing |
| Nislow et al. (1999) | Atlantic Salmon, Invertebrates | In-stream remediation e.g. large woody debris | Amount of potential habitat, fish retention | Suggests that addition of large woody debris increases the amount of potential habitat and foraging habitat, increasing salmon retention. | Mathematical modeling based on field and lab observations, compared with real findings. |
| Roni and Quinn (2001) | Oncorhynchus sp. | Large woody debris | Densities of fish | Suggests that woody debris placement leads to higher densities of salmonids, especially during winter. | Correlative study on amount of LWD and number of fish in treatment and reference sites using multiple-removal electrofishing. |
| Rosenfeld & Huato (2003) | Pool formation | Large Woody Debris | Pool frequency and quality | LWD with a diameter of >60cm is likeliest to cause pool formation, especially across wider channels. | Field survey and statistical analysis |
| Sundbaum & Naslund (1997) | Brown Trout | Woody debris | Growth and behaviour | Study found that although individual fish biomass decreased in both control and treatment streams, the biomass decrease was less in those streams with LWD. Concludes that the LWD decreases intraspecific competition through visual isolation. | Experiments comparing woody debris and non-LWD streams carried out outdoors with wild fish and also indoors with hatchery stock. No population density data measured. |
| Sundbaum, K. (2001) | Brown trout | woody debris | multiple | Study of effects of LWD on Brown Trout in both stream and artificial conditions- data not included but author contactable | Concludes that trout prefer WD as habitat, and addition of LWD increases the number of feeding sites and visual isolation. |

APPENDIX 4 – POPULATION & PREFERENCE MEASURES

Study features such as timescale, repetition and spatial scale were determined, and methodological factors such as independence and study unit size were also extracted in order to inform the decision. The classification of all studies to either population or preference were agreed by two reviewers.

POPULATION

| | |
|-------------------------|--|
| Timescale: | 2-20 years |
| Repetition: | 1-13 rivers, 1-48 units, often paired control reaches |
| Spatial Scale: | river-watershed |
| Author opinion: | usually predict population |
| Methodological factors: | Usually using electrofishing & seining, often study adults, reach scale measurements |

PREFERENCE

| | |
|-------------------------|--|
| Timescale: | 0-3 years |
| Repetition: | 1-21 streams, 1-199 units, use paired control sites, maybe within same reach |
| Spatial Scale: | stream-basin |
| Author opinion: | Both population and preference |
| Methodological factors: | Local counts, often juvenile life stages, often using backpack electrofishing or snorkel counts, often measure non-independent sites or habitat units. |